

EDENHOPE CARAVAN PARK UPGRADE

West Wimmera Shire Council Project



PROJECT OVERVIEW

OVERVIEW

The upgrade of the Edenhope Caravan Park will incorporate universal design to improve the quality of amenities provided and increase the number of sites available onsite. The aim of the project is to increase capacity and accessibility at the caravan park to improve visitor experience by providing a relaxing, enjoyable holiday experience with access to high-quality facilities.

PROJECT SCOPE

- New Amenities, camp kitchen, rec room
- New Sites with powerheads & water connection.
- Demolition of old infrastructure
- Landscaping

PROJECT BUDGET

- \$1.4M (\$350k Council co-contribution confirmed at December 2021 Council Meeting)

PROJECT APPROVALS

- Planning Approval - Not Required
- Landowner Consent (DELWP Landowner) - Received
- Building Approval - Required and initial discussions already underway, will be completed once the procurement process is completed.



CARAVAN PARKSITE MAP

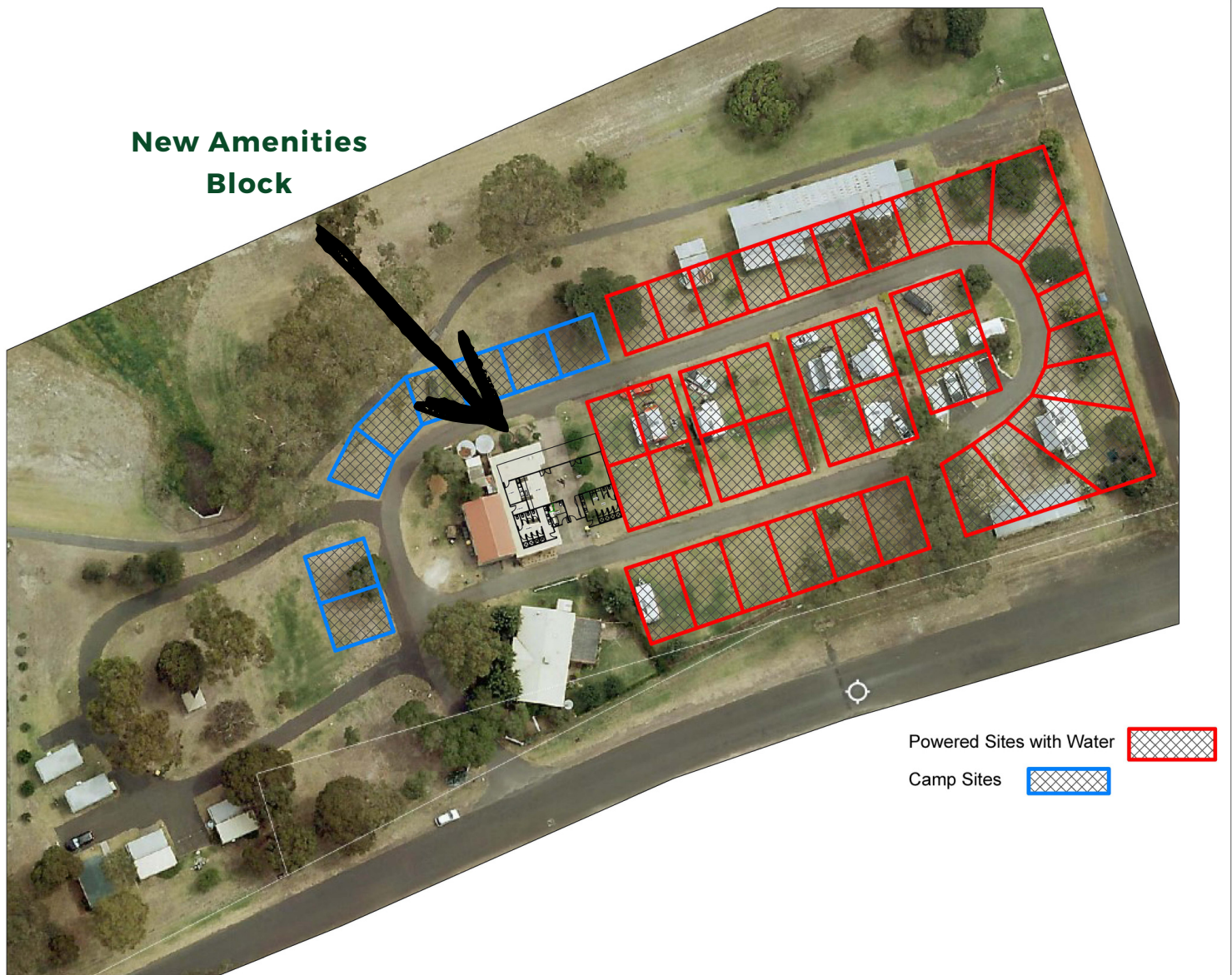
Current Site Plan

←
= to be removed

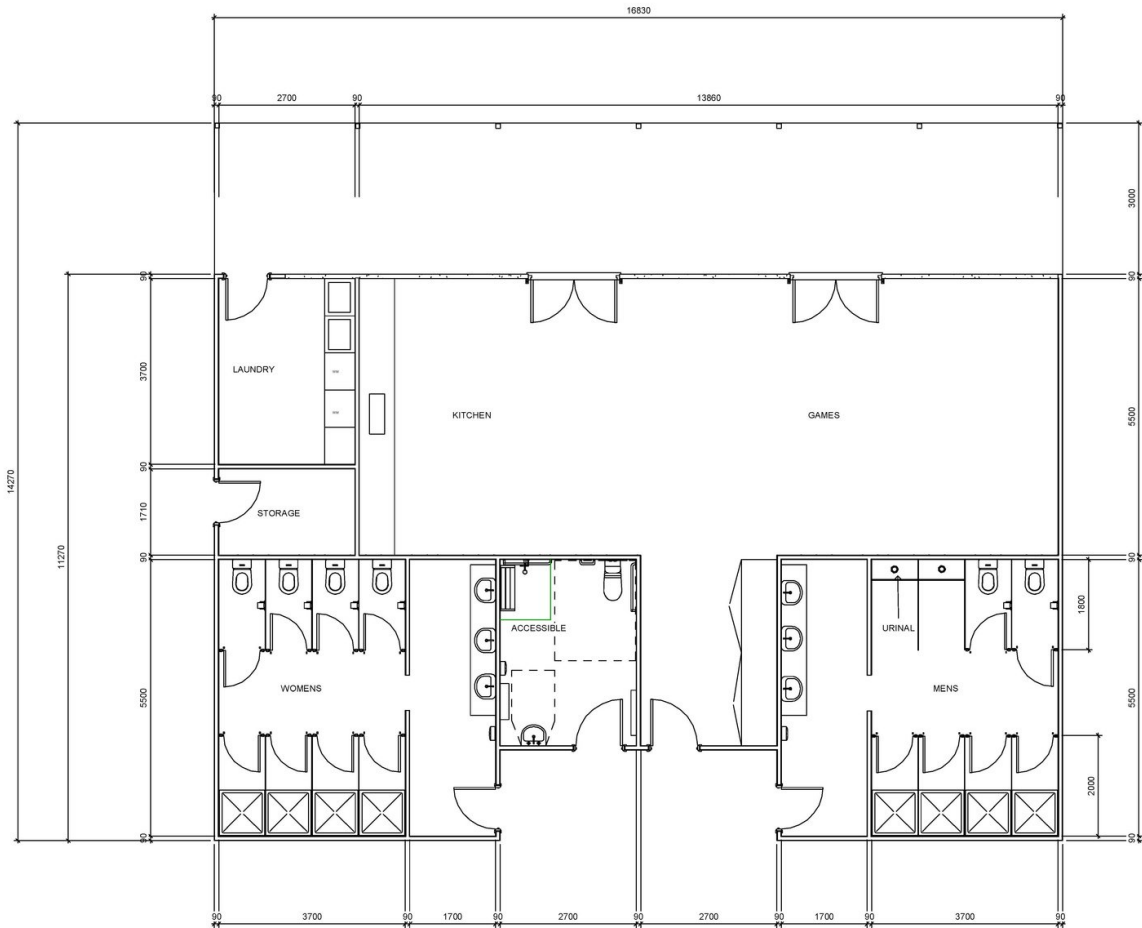


CARAVAN PARKSITE MAP

Plan of New Sites and Amenities Block



AMENITIES BUILDING



1 Level 0
1 : 50



LOCAL ATTRACTIONS



Lake Wallace



Wetlands



Baileys Rocks



Little Desert



Mt Arapiles



The Aboriginal Cricket Trail



The Harrow Discovery
Centre



Redtail Gallery



Flora Fauna and
Birdwatching



Dachshound Museum



Silo Art Trail



Stretches gallery