

NOTICE OF MOTION No:

MOTION:..That Councillors view all consultants reports in draft form before acceptance and payment..

Councillors Name: .Trevor Domaschenz.....



Date: 07/05/2018.....

Chief Executive Officer: .....



Date: 7/5/2018.....

G/: Sue/ Age-Min/ Agenda Template/ Notice of Motion

♀



# Council Policy Manual

## WEST WIMMERA SHIRE COUNCIL

COUNCIL POLICY		
PLAY SPACE POLICY	Policy No:	
	Adopted by Council:	
	Next review date:	
Senior Manager:	Director Infrastructure, Development & Works Director Corporate and Community Services	
Responsible Officer:	Assets and GIS Coordinator	
Functional Area:	Early Years, Sport & Recreation, Tourism, Economic Development, Assets and Works	
Introduction & Background	<p>Council supports the view that play space facilities help develop and improve the experience for all users, young and old. There is a need for play spaces that are unique and exciting spaces that provide a range of engaging play experiences that are accessible to users of all ages, abilities, cultural and social backgrounds.</p> <p>There is a need for a balance of facilities to cater for the progression of the users through their development stages, the contribution the play spaces provide for the liveability in, and to provide visitor attractions in the whole Council.</p> <p>With the adoption of the Municipal Public Health and Wellbeing Plan 2017-2021, and the Access and Inclusion Plan 2017-2020, the link with public health and healthy eating, physical activity and social connectivity must be considered, along with other Council Plan aspirations and objectives.</p>	
Purpose & Objectives	<ul style="list-style-type: none"><li>• To ensure the provision of play spaces meets contemporary access and development needs for users of the play spaces.</li><li>• To show Council's commitment to the provision of accessible, fun, stimulating and challenging play spaces that enhance the users learning, development and access to opportunities for physical activity.</li><li>• To develop a balanced approach to the provision of play spaces (and sport &amp; recreation) opportunities.</li><li>• To ensure a direct link to the Municipal Public Health and Wellbeing Plan, Access and Inclusion Plan, Early Years, Health Ageing and the Council Plan.</li></ul>	



# Council Policy Manual

## WEST WIMMERA SHIRE COUNCIL

Definitions	<p>Play Spaces:</p> <ul style="list-style-type: none"> <li>• Play spaces, including equipment in public spaces and skate parks.</li> <li>• Outdoor play spaces in Council managed kindergartens.</li> <li>• Exercise equipment and facilities under public management.</li> <li>• Open space areas.</li> </ul>
Policy Details	
1.	<p>Facilities</p> <p>A balance needs to be provided across the Council to cater for the various ages and capabilities. Economic and social benefit, including health and wellbeing will be considered in Council's determination of play space assets.</p>
2.	<p>Management</p> <p>Council has responsibility to develop and ensure play spaces are installed and maintained in accordance with the Australian Standards and are consist with Play Australia guidelines.</p> <p>To develop a maintenance plan in response to the independent audits undertaken for all of Council's play spaces, and to develop a plan that is achievable within Council's allocated annual play space and skate park maintenance budget.</p>
3.	<p>Inspections</p> <p>Council has responsibility to ensure play spaces are inspected in accordance with the Australian Standards, AS4486 - Development, installation, inspection, maintenance and operation, and Councils play space procedure.</p> <p>Council will ensure the inspections are completed by trained and competent staff, complete inspection checklists and provide maintenance records for all defects and issues.</p> <p>The inspection program identifies all the known risks associated with play spaces and generally takes one of the following forms.</p> <ul style="list-style-type: none"> <li>• Routine (visual) Inspections</li> <li>• Proactive Periodic Scheduled Inspections</li> <li>• Reactive Inspections</li> </ul>



# Council Policy Manual

## WEST WIMMERA SHIRE COUNCIL

4.	Review of Play Spaces
	<p>Council will review the design, provision and purpose of individual play spaces every four years.</p> <p>Council will consult with the community with regards to the installation, refurbishment or removal of play spaces and/or the play equipment.</p>
5.	Australian Standards
	<ul style="list-style-type: none"><li>• AS 1428 – Design for Access and Mobility</li><li>• AS 4685 – Playground Equipment</li><li>• AS 4486 – Development, installation, inspection, maintenance and operation</li><li>• AS 4422 – Playground Surfacing</li><li>• AS 2555 – Supervised Adventure Playgrounds</li><li>• AS 2890 – Parking Facilities</li><li>• AS 1158 – Exterior Lighting</li></ul>
6.	References
	<ul style="list-style-type: none"><li>• Municipal Public Health and Wellbeing Plan 2017-2021</li><li>• Access and Inclusion Plan 2017-2020</li><li>• West Wimmera Council Plan 2017-2021</li><li>• Sport and Recreation Victoria</li></ul>



# Council Policy Manual

## WEST WIMMERA SHIRE COUNCIL

<b>Policy Adopted:</b>	Ordinary Meeting 13/06/02	Minute Book Page 10145	
<b>Policy Reviewed:</b>	Ordinary Meeting 06/04/06	Minute Book Page 13682	
	Ordinary Meeting 11/03/10	Minute Book Page 17759	
	Ordinary Meeting 16/7/15	Minute Book Page 31431	RecFind 15/002907
	Ordinary Meeting __/__/17	Minute Book Page _____	RecFind _____

Draft



# Council Policy Manual

## WEST WIMMERA SHIRE COUNCIL

COUNCIL POLICY	
RECREATION POLICY	Policy No:
	Adopted by Council:
	Next review date:
Senior Manager:	Director Corporate & Community Services Director Infrastructure, Development & Works
Responsible Officer:	Assets and GIS Coordinator
Functional Area:	Early Years, Sport & Recreation, Tourism, Economic Development, Assets and Works
Introduction & Background	<p>Council supports the view that sport, recreation and leisure pursuits are important to the individual and the community.</p> <p>In order to promote fitness, general health and connectivity it is important that adequate opportunities be given for individual and group recreation, similarly, encouragement should be given to all residents in the use of the facilities and services provided. These facilities are an invaluable resource and every appropriate effort must be made to encourage maximum use by an optimum number of persons.</p> <p>With the adoption of the Municipal Public Health and Wellbeing Plan 2017-2021, and the Access and Inclusion Plan 2017-2020, the link with public health and healthy eating, physical activity and social connectivity must be considered, along with other Council Plan aspirations and objectives.</p>
Purpose & Objectives	<p>To ensure adequate provision, management and encouragement in the use of recreation facilities, and to provide high quality, accessible community sport and recreation facilities by encouraging:</p> <ul style="list-style-type: none"> <li>• Increased sport and recreation participation</li> <li>• Increased female and junior participation</li> <li>• Increased access to sport and recreation opportunities</li> <li>• Better planning of sport and recreation facilities</li> <li>• Innovative sport and recreation facilities</li> <li>• Environmentally sustainable facilities and</li> <li>• Universally designed facilities.</li> </ul>



# Council Policy Manual

## WEST WIMMERA SHIRE COUNCIL

Definitions	<p><b>Recreation:</b> recreation is defined as an activity that a person chooses to participate in during their free time for the purpose of enjoyment. The range of activities can involve active or passive pursuits, which may encourage a social interaction with other community members. These activities may include outdoor chess, walking, jogging, hiking, bike riding, mountain biking, fitness classes, dancing and horse riding. In general, recreational activities are less structured than organized sporting activities.</p> <p><b>Sport:</b> sporting activities are generally more structured and involve teams, competitions and opponents. They generally require specific playing facilities such as an oval, wicket, pitch, courts or playing surface. Organised sports also typically hold regular training and coaching sessions, and often have a permanent location, club room or changing facilities.</p>
Policy Details	
1.	<p><b>Facilities</b></p> <p>Recreation areas and facilities should be broad and varied enough to cater for as many sporting, recreation and leisure interests as may be practical. A balance is therefore to be maintained between competitive and non-competitive, group and individual, organised and free form opportunities.</p> <p>Council supports and encourages the joint use of Non-Council owned and/or managed recreation areas, school and other public recreation facilities.</p> <p>Encouragement will be given to the multi-purpose use of facilities rather than providing separate facilities for each community group.</p> <p>Council encourages the participation of clubs, groups and individuals in jointly providing recreation facilities in the community.</p> <p>Placement or location of facilities should take into account the population, catchment, ease of access, (both transport and cost), tourist attraction, service provision and general security of persons and facilities.</p> <p>Priority will be given to ensuring Reserves and developments are environmentally sensitive.</p>
2.	<p><b>Management</b></p> <p>Wherever public recreation areas and facilities are established, Council will encourage and enable residents and users to take an active role in the overall management.</p> <p>Whether community or Council committee of management, each committee where established is to be encouraged to set a goal or aim for each Reserve or facility in terms of its primary function, together with other uses, immediate and future.</p> <p>The committee will assume under Council the control of the users, right of access, fees charged, hire or lease, improvement, modification and promotion of the project, whilst ensuring reasonable public access for all residents.</p>



# Council Policy Manual

## WEST WIMMERA SHIRE COUNCIL

3.	Services
	<p>Council will endeavour to maintain, improve, and maximise the use of Council-controlled facilities. Council will also encourage/support access to Non-Council owned/managed assets.</p> <p>The principal contact for service levels for recreation shall be the Director Corporate &amp; Community Services.</p>
4.	Maintenance
	<p>Recreation structures and buildings, sporting and leisure facilities under Council control are to be inspected in accordance with Council's Risk Management Program in regard to safety, quality, attractiveness and efficiency.</p> <p>Maintenance delivery may be negotiated with user bodies and/or community groups but responsibility of service standards remains with Council.</p>
5.	Australian Standards
	<ul style="list-style-type: none"><li>• Disability (Access to Premises – Buildings) Standards 2010</li><li>• Disability Discrimination Act 1992 (DDA)</li><li>• Building Code of Australia (BCA)</li><li>• AS 1428 – Design for Access and Mobility</li><li>• AS 2890 – Parking Facilities</li><li>• AS 1680 – Interior Lighting</li><li>• AS 1158 – Exterior Lighting</li><li>• AS 2560 – Sports Lighting</li></ul>
6.	References
	<ul style="list-style-type: none"><li>• Municipal Public Health and Wellbeing Plan 2017-2021</li><li>• Access and Inclusion Plan 2017-2020</li><li>• West Wimmera Council Plan 2017-2021</li><li>• Sport and Recreation Victoria</li></ul>





# Council Policy Manual

## WEST WIMMERA SHIRE COUNCIL

<b>Policy Adopted:</b>	Ordinary Meeting 12/02/97	Minute Book Page 1920	
<b>Policy Reviewed:</b>	Ordinary Meeting 05/09/02	Minute Book Page 10366	RecFind
	Ordinary Meeting 06/04/06	Minute Book Page 13682	RecFind
	Ordinary Meeting 11/03/10	Minute Book Page 17759	RecFind
	Ordinary Meeting 16/07/15		15/002908
	Ordinary Meeting / /		Recfind Ref

DRAFT

## Gill Bradshaw

---

**From:** mark.chisholm@delwp.vic.gov.au on behalf of nativevegetation.support@depi.vic.gov.au  
**Sent:** Tuesday, 27 February 2018 11:39 AM  
**To:** Gill Bradshaw; pauline.rudolph@delwp.vic.gov.au  
**Subject:** Scattered trees - Detailed pathway

Hi Gill and Pauline

We have now created two reports for farmers who are only removing scattered trees, as confirmed by yourselves.

The commitment that our Minister made to the VFF, is that DELWP would assist farmers with the assessment or assessment fees for applicants who are impacted by the change in the removal threshold that occurred as an outcome of the review of the regulations.

This commitment applies to applications in the Detailed assessment pathway under the 2017 regulations, but would have been in the Low risk-based pathway under the 2013 regulations.

Ron and Mandy's (HBFarms) proposal which is removing 8 trees meets the criteria of the Minister's commitment, as their application would have been in the Low risk-based pathway under the 2013 regulations.

However, Jonathan Dyer's proposal which is removing 23 trees does not meet the criteria of the Minister's commitment, as his application would have been in the High risk-based pathway under the 2013 regulations. As we had already committed to processing Jonathan's proposal we let it go, however, we will not be doing this in the future. These applicants will need to follow the proper process.

Regards

Mark

**Native Vegetation Support | Biodiversity Division**  
Energy, Environment and Climate Change | Department of Environment, Land, Water and Planning

8 Nicholson Street, East Melbourne, Victoria 3002  
E: nativevegetation.support@delwp.vic.gov.au



☒ I acknowledge the traditional Aboriginal owners of country throughout Victoria and pay my respect to them, their culture and their Elders past, present and future



# Native vegetation removal report

This report provides information to support an application to remove, destroy or lop native vegetation in accordance with the *Guidelines for the removal, destruction or lopping of native vegetation*. The report is **not an assessment by DELWP** of the proposed native vegetation removal. Native vegetation information and offset requirements have been determined using spatial data provided by the applicant or their consultant.

Date of issue: 27/02/2018  
Time of issue: 10:54 am

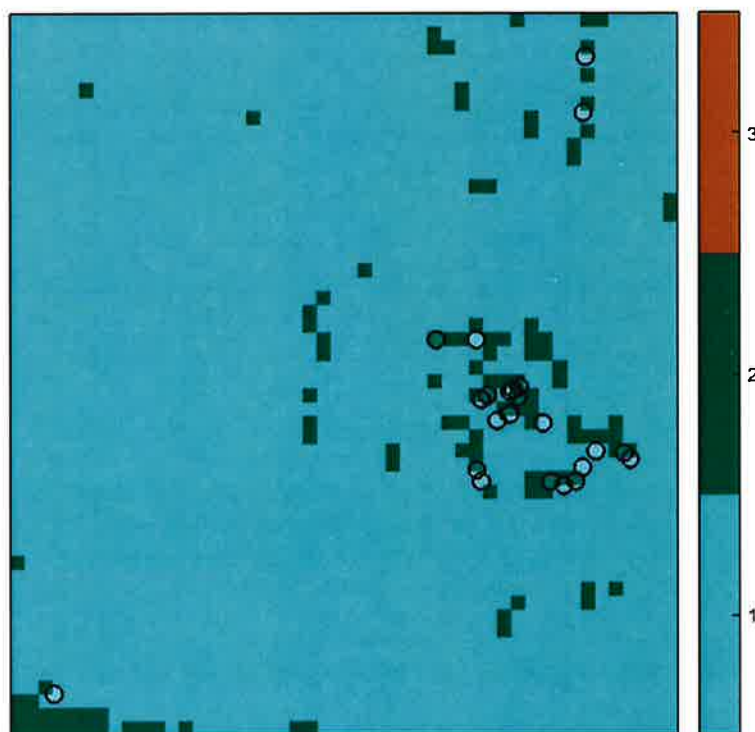
Report ID: JDN\_2018\_001

Project ID J Dyer

## Assessment pathway

Assessment pathway	Detailed Assessment Pathway
Extent including past and proposed	1.407 ha
Extent of past removal	0.000 ha
Extent of proposed removal	1.407 ha
No. Large trees proposed to be removed	23
Location category	Location 2 The native vegetation is in an area mapped as an endangered Ecological Vegetation Class. Removal of less than 0.5 hectares of native vegetation in this location will not have a significant impact on any habitat for a rare or threatened species.

### 1. Location map



# Native vegetation removal report

## Offset requirements if a permit is granted

Any approval granted will include a condition to obtain an offset that meets the following requirements:

<b>General offset amount<sup>1</sup></b>	0.246 general habitat units
Vicinity	Wimmera Catchment Management Authority (CMA) or West Wimmera Shire Council
Minimum strategic biodiversity value score <sup>2</sup>	0.132
Large trees	23 large trees

NB: values within tables in this document may not add to the totals shown above due to rounding

Appendix 1 includes information about the native vegetation to be removed

Appendix 2 includes information about the rare or threatened species mapped at the site.

Appendix 3 includes maps showing native vegetation to be removed and extracts of relevant species habitat importance maps

<sup>1</sup> The general offset amount required is the sum of all general habitat units in Appendix 1.

<sup>2</sup> Minimum strategic biodiversity score is 80 per cent of the weighted average score across habitat zones where a general offset is required

## Next steps

Any proposal to remove native vegetation must meet the application requirements of the Detailed Assessment Pathway and it will be assessed under the Detailed Assessment Pathway.

If you wish to remove the mapped native vegetation you are required to apply for a permit from your local council. Council will refer your application to DELWP for assessment, as required. **This report is not a referral assessment by DELWP.**

This *Native vegetation removal report* must be submitted with your application for a permit to remove, destroy or lop native vegetation.

Refer to the *Guidelines for the removal, destruction or lopping of native vegetation* (the Guidelines) for a full list of application requirements. This report provides information that meets the following application requirements:

- The assessment pathway and reason for the assessment pathway
- A description of the native vegetation to be removed (partly met)
- Maps showing the native vegetation and property (partly met)
- Information about the impacts on rare or threatened species.
- The offset requirements determined in accordance with section 5 of the Guidelines that apply if approval is granted to remove native vegetation.

Additional application requirements must be met including:

- Topographical and land information
- Recent dated photographs
- Details of past native vegetation removal
- An avoid and minimise statement
- A copy of any Property Vegetation Plan that applies
- A defensible space statement as applicable
- A statement about the Native Vegetation Precinct Plan as applicable
- A site assessment report including a habitat hectare assessment of any patches of native vegetation and details of trees
- An offset statement that explains that an offset has been identified and how it will be secured.

---

© The State of Victoria Department of Environment, Land, Water and Planning  
Melbourne 2018

This work is licensed under a Creative Commons Attribution 4.0 International licence. You are free to re-use the work under that licence, on the condition that you credit the State of Victoria as author. The licence does not apply to any images, photographs or branding, including the Victorian Coat of Arms, the Victorian Government logo and the Department of Environment, Land, Water and Planning logo. To view a copy of this licence, visit <http://creativecommons.org/licenses/by/3.0/au/deed.en>

Authorised by the Victorian Government, 8 Nicholson Street, East Melbourne.

For more information contact the DELWP Customer Service Centre 136 186

[www.delwp.vic.gov.au](http://www.delwp.vic.gov.au)

### Disclaimer

This publication may be of assistance to you but the State of Victoria and its employees do not guarantee that the publication is without flaw of any kind or is wholly appropriate for your particular purposes and therefore disclaims all liability for any error, loss or other consequence which may arise from you relying on any information in this publication.

Obtaining this publication does not guarantee that an application will meet the requirements of Clauses 52.16 or 52.17 of the Victoria Planning Provisions and Victorian planning schemes or that a permit to remove native vegetation will be granted.

Notwithstanding anything else contained in this publication, you must ensure that you comply with all relevant laws, legislation, awards or orders and that you obtain and comply with all permits, approvals and the like that affect, are applicable or are necessary to undertake any action to remove, lop or destroy or otherwise deal with any native vegetation or that apply to matters within the scope of Clauses 52.16 or 52.17 of the Victoria Planning Provisions and Victorian planning schemes.

## Appendix 1: Description of native vegetation to be removed

The species-general offset test was applied to your proposal. This test determines if the proposed removal of native vegetation has a proportional impact on any rare or threatened species habitats above the species offset threshold. The threshold is set at 0.005 per cent of the mapped habitat value for a species. When the proportional impact is above the species offset threshold a species offset is required. This test is done for all species mapped at the site. Multiple species offsets will be required if the species offset threshold is exceeded for multiple species.

Where a zone requires species offset(s), the species habitat units for each species in that zone is calculated by the following equation in accordance with the Guidelines:

$$\text{Species habitat units} = \text{extent} \times \text{condition} \times \text{species landscape factor} \times 2, \text{ where the species landscape factor} = 0.5 + (\text{habitat importance score}/2)$$

The species offset amount(s) required is the sum of all species habitat units per zone

Where a zone does not require a species offset, the general habitat units in that zone is calculated by the following equation in accordance with the Guidelines:

$$\text{General habitat units} = \text{extent} \times \text{condition} \times \text{general landscape factor} \times 1.5, \text{ where the general landscape factor} = 0.5 + (\text{strategic biodiversity value score}/2)$$

The general offset amount required is the sum of all general habitat units per zone.

### Native vegetation to be removed

Information provided by or on behalf of the applicant in a GIS file							Information calculated by EnSym					
Zone	Type	BioEVC	BioEVC conservation status	Large tree(s)	Partial removal	Condition score	Polygon Extent	Extent without overlap	SBV score	HI score	Habitat units	Offset type
1-A	Scattered Tree	wim_0826	Endangered	1	no	0.200	0.070	0.070	0.700		0.018	General
2-A	Scattered Tree	wim_0096	Endangered	1	no	0.200	0.070	0.065	0.140		0.011	General
3-A	Scattered Tree	wim_0096	Endangered	1	no	0.200	0.070	0.065	0.140		0.011	General
4-A	Scattered Tree	wim_0096	Endangered	1	no	0.200	0.070	0.067	0.140		0.012	General
5-A	Scattered Tree	wim_0096	Endangered	1	no	0.200	0.070	0.063	0.140		0.011	General
6-A	Scattered Tree	wim_0096	Endangered	1	no	0.200	0.070	0.065	0.143		0.011	General
7-A	Scattered Tree	wim_0096	Endangered	1	no	0.200	0.070	0.070	0.153		0.012	General
8-A	Scattered Tree	wim_0096	Endangered	1	no	0.200	0.070	0.070	0.160		0.012	General

Information provided by or on behalf of the applicant in a GIS file										Information calculated by EnSym				
Zone	Type	BioEVC	BioEVC conservation status	Large tree(s)	Partial removal	Condition score	Polygon Extent	Extent without overlap	SBV score	HI score	Habitat units	Offset type		
9-A	Scattered Tree	wim_0096	Endangered	1	no	0.200	0.070	0.057	0.160		0.010	General		
10-A	Scattered Tree	wim_0096	Endangered	1	no	0.200	0.070	0.057	0.160		0.010	General		
11-A	Scattered Tree	wim_0096	Endangered	1	no	0.200	0.070	0.070	0.140		0.012	General		
12-A	Scattered Tree	wim_0096	Endangered	1	no	0.200	0.070	0.070	0.100		0.012	General		
13-A	Scattered Tree	wim_0096	Endangered	1	no	0.200	0.070	0.070	0.100		0.012	General		
14-A	Scattered Tree	wim_0096	Endangered	1	no	0.200	0.070	0.067	0.140		0.011	General		
15-A	Scattered Tree	wim_0096	Endangered	1	no	0.200	0.070	0.067	0.140		0.011	General		
16-A	Scattered Tree	wim_0096	Endangered	1	no	0.200	0.070	0.052	0.140		0.009	General		
17-A	Scattered Tree	wim_0096	Endangered	1	no	0.200	0.070	0.049	0.111		0.008	General		
18-A	Scattered Tree	wim_0096	Endangered	1	no	0.200	0.070	0.025	0.113		0.004	General		
19-A	Scattered Tree	wim_0096	Endangered	1	no	0.200	0.070	0.037	0.137		0.006	General		
20-A	Scattered Tree	wim_0096	Endangered	1	no	0.200	0.070	0.054	0.139		0.009	General		
21-A	Scattered Tree	wim_0096	Endangered	1	no	0.200	0.070	0.054	0.140		0.009	General		
22-A	Scattered Tree	wim_0096	Endangered	1	no	0.200	0.070	0.070	0.160		0.012	General		
23-A	Scattered Tree	wim_0096	Endangered	1	no	0.200	0.070	0.070	0.100		0.012	General		

## Appendix 2: Information about impacts to rare or threatened species' habitats on site

This table lists all rare or threatened species' habitats mapped at the site.

Species common name	Species scientific name	Species number	Conservation status	Group	Habitat impacted	% habitat value affected
Hairy-pod Wattle	<i>Acacia glandulicarpa</i>	500039	Vulnerable	Dispersed	Habitat importance map	0.0001
Winged New Holland Daisy	<i>Vittadinia pterochaeta</i>	503542	Vulnerable	Dispersed	Habitat importance map	0.0000
Kamarooka Mallee	<i>Eucalyptus froggattii</i>	501279	Rare	Dispersed	Habitat importance map	0.0000
Swamp Sheoak	<i>Casuarina obesa</i>	500682	Endangered	Dispersed	Habitat importance map	0.0000
Green-leaf Mallee	<i>Eucalyptus phenax subsp. phenax</i>	504270	Rare	Dispersed	Habitat importance map	0.0000
Western Golden-tip	<i>Goodia medicaginea</i>	501518	Rare	Dispersed	Habitat importance map	0.0000
Rock Wattle	<i>Acacia rupicola</i>	500082	Rare	Dispersed	Habitat importance map	0.0000
Small Monkey-flower	<i>Elacholoma prostrata</i>	502196	Rare	Dispersed	Habitat importance map	0.0000
Fine-hairy Spear-grass	<i>Austrostipa puberula</i>	503988	Rare	Dispersed	Habitat importance map	0.0000
Neat Spear-grass	<i>Austrostipa mundula</i>	503281	Rare	Dispersed	Habitat importance map	0.0000
Fuzzy New Holland Daisy	<i>Vittadinia cuneata var. morrisii</i>	505060	Rare	Dispersed	Habitat importance map	0.0000
Small Milkwort	<i>Comesperma polygaloides</i>	500798	Vulnerable	Dispersed	Habitat importance map	0.0000
Button Immortelle	<i>Leptorhynchus waitzia</i>	501949	Vulnerable	Dispersed	Habitat importance map	0.0000
Streaked Wattle	<i>Acacia lineata</i>	500050	Rare	Dispersed	Habitat importance map	0.0000
Hairy Tails	<i>Ptilotus erubescens</i>	502825	Vulnerable	Dispersed	Habitat importance map	0.0000
Sand Brome	<i>Bromus arenarius</i>	500497	Rare	Dispersed	Habitat importance map	0.0000
Buloke Mistletoe	<i>Amyema linophylla subsp. orientalis</i>	500217	Vulnerable	Dispersed	Habitat importance map	0.0000
Buloke	<i>Allocasuarina luehmannii</i>	500678	Endangered	Dispersed	Habitat importance map	0.0000
Golden Sun Moth	<i>Synemon plana</i>	15021	Critically endangered	Dispersed	Habitat importance map	0.0000



Black Falcon	<i>Falco subniger</i>	10238	Vulnerable	Dispersed	Habitat importance map	0.0000
Dwarf Brooklime	<i>Gratiola pumilo</i>	503753	Rare	Dispersed	Habitat importance map	0.0000
Branching Groundsel	<i>Senecio cunninghamii</i> var. <i>cunninghamii</i>	503104	Rare	Dispersed	Habitat importance map	0.0000

#### Habitat group

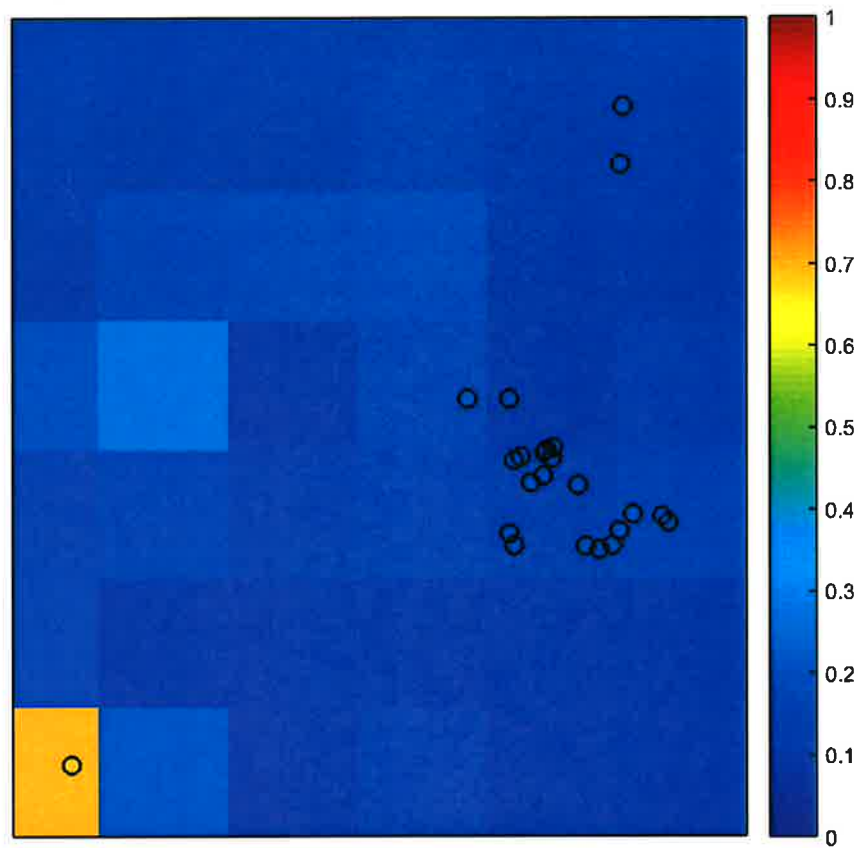
- Highly localised habitat means there is 2000 hectares or less mapped habitat for the species
- Dispersed habitat means there is more than 2000 hectares of mapped habitat for the species

#### Habitat impacted

- Habitat importance maps are the maps defined in the Guidelines that include all the mapped habitat for a rare or threatened species
- Top ranking maps are the maps defined in the Guidelines that depict the important areas of a dispersed species habitat, developed from the highest habitat importance scores in dispersed species habitat maps and selected VBA records
- Selected VBA record is an area in Victoria that represents a large population, roosting or breeding site etc.

## Appendix 3 – Images of mapped native vegetation

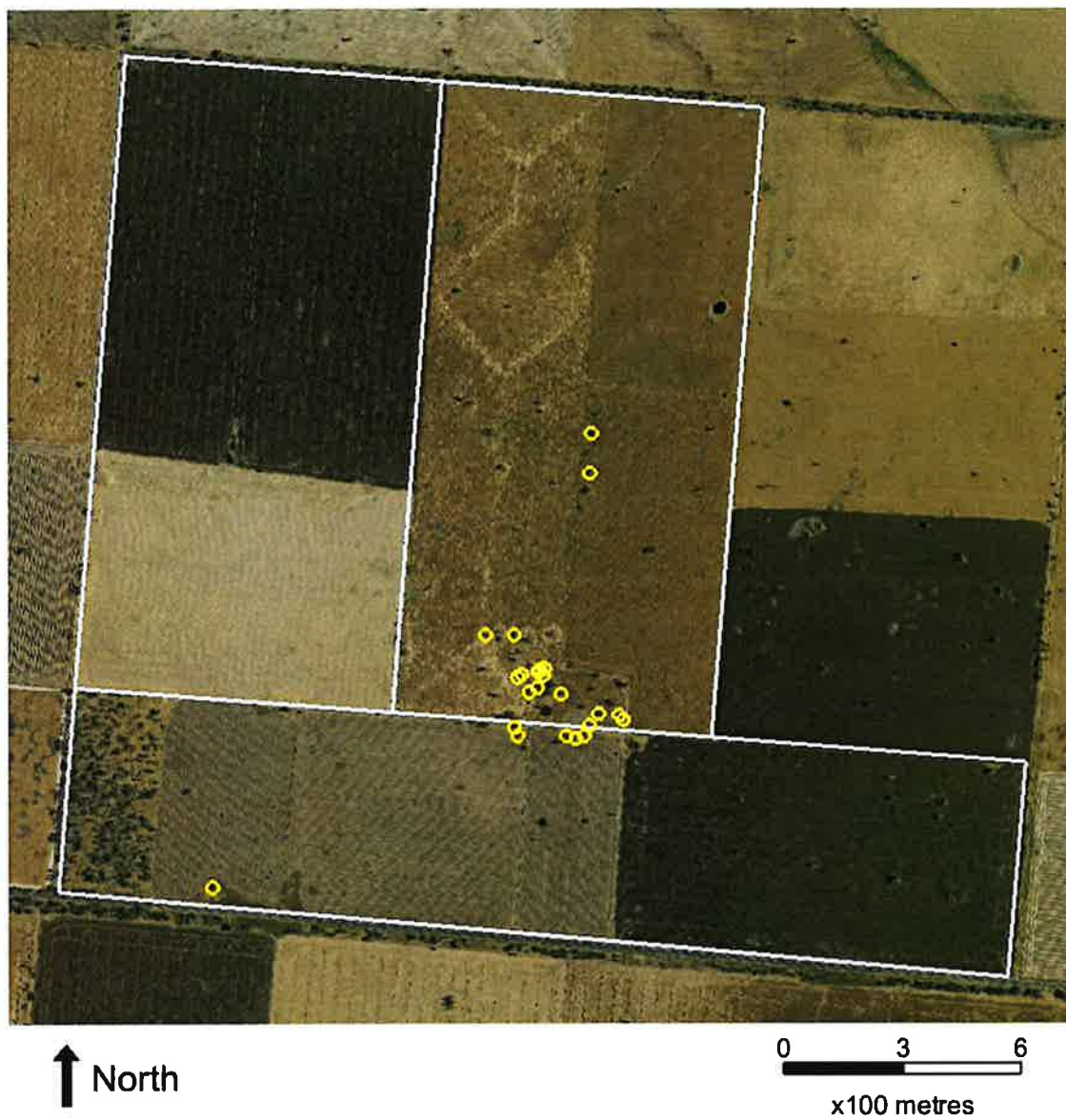
### 2. Strategic biodiversity values map



### 3. Aerial photograph showing mapped native vegetation



#### 4. Map of the property in context



Yellow boundaries denote areas of proposed native vegetation removal.



## Department of Environment, Land, Water & Planning

402-406 Mair Street  
Ballarat VIC 3350  
(03) 5336 6856

[Grampians.planning@delwp.vic.gov.au](mailto:Grampians.planning@delwp.vic.gov.au)

Our Ref: SP463332  
Your Ref: P1503/PA0939

12 April 2018

Gillian Bradshaw  
Manager Planning and Environment  
West Wimmera Shire Council  
PO Box 201  
EDENHOPE VIC 3318

Dear Ms Bradshaw

**Planning Application:** P1503/PA0939

**Proposal:** Native vegetation removal to improve access to farmland for cropping operations

**Address:** CA 48 & 52 Parish of Dinyarrak, Western Highway Service station

I refer to a correspondence from permit applicant dated 23 March 2018 with information addressing the Department of Environment, Land, Water & Planning (DELWP)'s request for further information dated 22 March 2018.

DELWP has considered the above application in accordance with Section 55 of the *Planning and Environment Act 1987*.

The application proposes to remove 1.407 hectares of native vegetation to allow for safer access for machinery. DELWP has assessed this application in accordance with 'detailed assessment pathway' of the *Guidelines for the removal, destruction or lopping of native vegetation* (DELWP 2017).

DELWP does not object to the granting of a permit for the above application, and recommends the following conditions be included in the permit:

1. Before works start, the permit holder must advise all persons undertaking the vegetation removal or works on site of all relevant permit conditions and associated statutory requirements or approvals.
2. To offset the removal of 1.407 hectares of native vegetation, the permit holder must secure a native vegetation offset that meets the following requirements and in accordance with the *Guidelines for the removal, destruction or lopping of native vegetation* (DELWP 2017) and the *Native vegetation gain scoring manual-version 2*:

The general offset must:

- a) contribute of 0.246 general habitat units;
- b) be located within the Wimmera Catchment Management boundary and West Wimmera municipal area;
- c) with a minimum strategic biodiversity value of at least 0.132; and

#### Privacy Statement

Any personal information about you or a third party in your correspondence will be protected under the provisions of the Privacy and Data Protection Act 2000. It will only be used or disclosed to appropriate Ministerial, Statutory Authority, or departmental staff in regard to the purpose for which it was provided, unless required or authorised by law. Enquiries about access to information about you held by the Department should be directed to the Privacy Coordinator, Department of Environment, Land, Water and Planning, PO Box 500, East Melbourne, Victoria



- d) the offset(s) secured must also protect 23 large trees (refer to Ecological Vegetation Class benchmark).
3. Before any native vegetation is removed, evidence that an offset has been secured must be provided to the satisfaction of the Responsible Authority. This offset must meet the offset requirements set out in this permit and be in accordance with the requirements of *Guidelines for the removal, destruction or lopping of native vegetation* (DELWP 2017) and the *Native vegetation gain scoring manual-version 2*.
- a. a security agreement, to the required standard, for the offset site or sites, including a 10 year offset management plan.
  - b. a credit register extract from the Native Vegetation Credit Register

In accordance with Section 66 of the *Planning and Environment Act 1987*, please provide a copy of the permit, if one is granted, or any notice to grant or refuse to grant a planning permit.

If you have any queries regarding this matter, please contact me at DELWP's Ballarat office on telephone (03) 5336 6644.

Yours sincerely



**EZAZ SHEIKH**

Acting Senior Planning and Approvals Program Officer  
Grampians Region

Copy to applicant via email: [akdyer@bigpond.net.au](mailto:akdyer@bigpond.net.au)