



Annual Plan 2022-2023

Table of contents

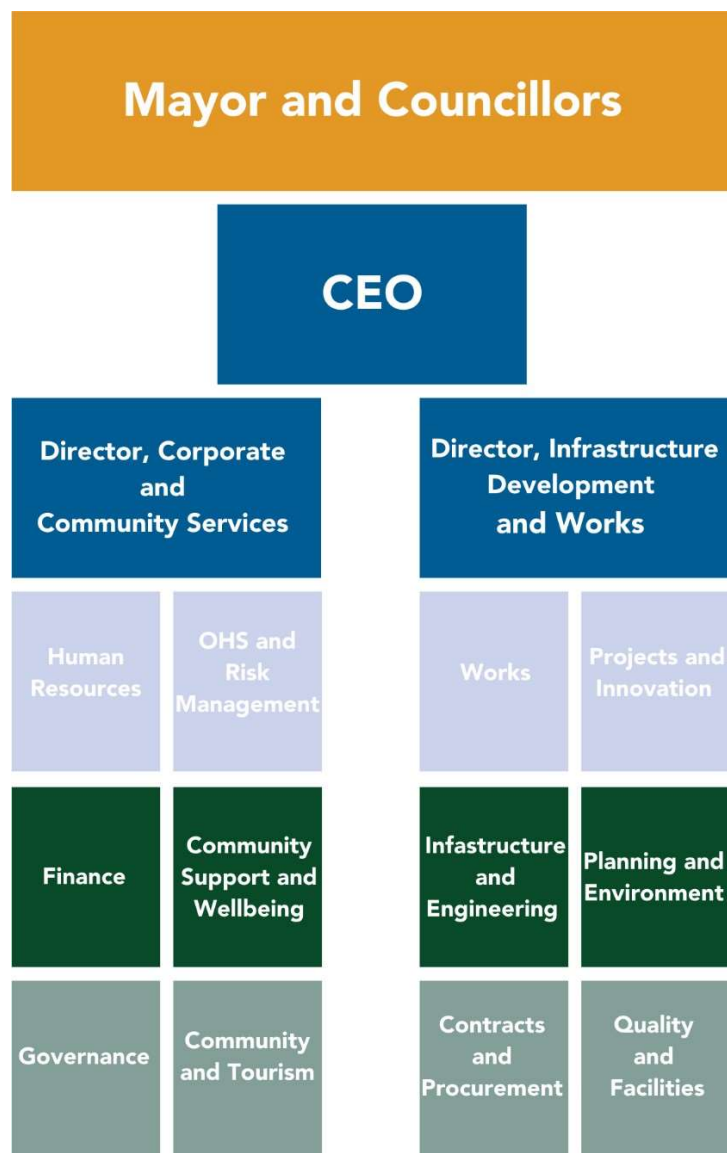
Acknowledgement of Country	3
Organisational chart West Wimmera Shire Council	3
Message from the CEO and Mayor	4
About the Annual Plan	5
Our planning framework	5
Our shire services	6
Our values	6
Council vision and goals	7
Budget information	8
Key focus areas 2022-23	9

Acknowledgement of Country

The West Wimmera Shire Council respectfully acknowledges the Traditional Custodians of the land, and pays respects to their elders, past, present, and emerging.

Organisational chart West Wimmera Shire Council

Council is the governing body that appoints a Chief Executive Officer (CEO). The CEO has responsibility for the day-to-day management of operations in accordance with the strategic directions of the Council Plan. Two General Managers/Directors and the CEO form the Senior Management Group.



Message from the Mayor and CEO

On behalf of Council, it gives us great pleasure to present the Annual Plan 2022-23.

As always, the Annual Plan represents a time to pause and reflect on our achievements of the past 12 months and set out everything we hope to achieve in the next 12 months.

Anything Council plans to do must be within the community's best interests and this document strongly prioritises our ratepayers' expectations and recommendations.

After extensive consultation with the community, Council adopted its 2021-25 Council Plan in October 2021. Our Annual Plan has now been compiled, identifying the initiatives of the Council Plan, which Council intends to deliver in 2022-23. The Annual Plan has informed the development of the 2022-23 Budget, ensuring sufficient funding and resourcing has been allocated to achieve the actions and initiatives outlined in the Annual Plan.

Our Annual Plan outlines five goals that Council will work to achieve throughout the next financial year. They are:

- Goal 1 – Liveable and Healthy Community
- Goal 2 – Diverse and Prosperous Community
- Goal 3 – Sustainable Environment
- Goal 4 – Good Governance
- Goal 5 – We will proactively drive and live our values: Innovative, Accountable, United and Collaborate.

Over the next year, Council aims to support and encourage events, deliver quality services, and support a safe and inclusive community. We will encourage and support businesses and promote the shire as a great place to visit, live, and invest.

Our Annual Plan includes a range of community projects that we will seek funding for, such as Edenhope football changerooms and lighting upgrade; Harrow netball/tennis courts and lighting upgrade; Edenhope Playspace; Goroke oval irrigation/fence upgrade; Apsley playground.

If successful on already submitted funding applications, over the next 12 months Council will deliver the West Wimmera Cabin Project; Edenhope Caravan Park upgrade; Apsley netball/tennis court lighting upgrade; Edenhope equine facility upgrade; Enabling Tourism - Destination Harrow; and Enabling Tourism - Serviceton Railway Station project.

The next financial year has a clear emphasis placed on the renewal of large assets such as roads, drainage, and shire-owned buildings. Council will aim to make a positive impact on meeting maintenance and renewal requirements of Council's assets.

Council is also committed to helping our community and one of our major projects in 2022-23 will be to facilitate the Edenhope childcare service at the conclusion of the pilot program.

Council's vision can only be achieved with the help of the community, and we will continue to engage with our ratepayers to make sure we are meeting all their expectations. We continue to encourage community members to share their ideas through our innovation platform. We will also continue to advocate for our community on issues that are important to our future.



We hope that the information laid out within this Annual Plan gives the community an understanding of how we plan to meet our financial commitments, goals, strategies, and initiatives featured in our Council Plan, and continues to serve as a blueprint to build a progressive, knowledge-based Council that embraces innovation, culture, and sustainable living.

West Wimmera Shire Council looks forward to implementing the various activities contained within the 2022/23 Annual Plan.

Mayor Bruce Meyer OAM and CEO David Bezuidenhout

About the Annual Plan

The Annual Plan sets out the activities that Council will undertake during the year to deliver the outcomes of the Council Plan 2021-2025. The annual plan works in conjunction with the Annual Report and the Budget for financial year 2022-23.

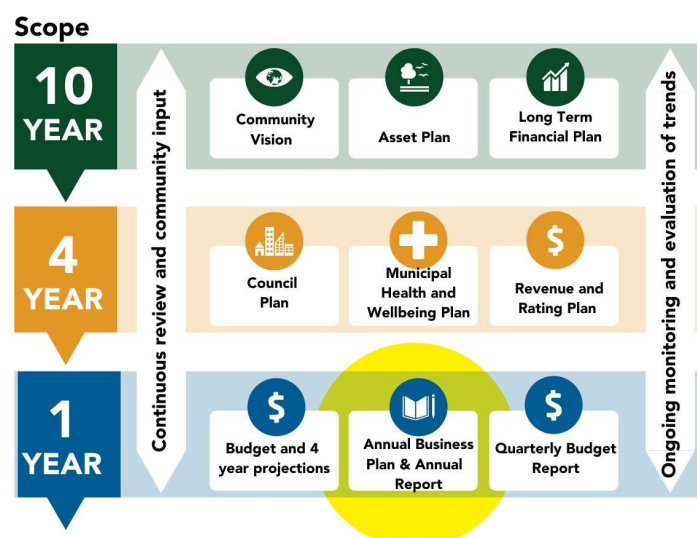
Together the following integrated documents form the local government's system of financial management:

- Council Plan 2021-25 incorporating community vision
- Long-term financial plan and yearly budget
- 2022-23 Annual Report and Annual Plan

The Chief Executive Officer must present a written quarterly progress report to Council outlining progress towards implementing the Annual Plan. Council may amend the Annual Plan during the year by resolution. The Chief Executive Officer has discretion to make small amendment to line items, if it does not provide a significant variation to the overall budget.

Our planning framework

Our planning framework comprises the key plans that guide our work and decision making and connects the long-term community needs and aspirations. The Council Plan is aligned with the 2041 Community Vision. The Annual Plan sits within our 1-year scope and is an annual document Council will develop to ensure that we are moving towards our goals.



Our shire services

West Wimmera Shire Council is responsible for the delivery of over 70 services across many areas, including:

For Our Community  <ul style="list-style-type: none"> • Building Services and Planning Permits • Libraries • Sporting Facilities • Parks, Gardens and Playgrounds • Council-run Events • Support for Community-run Events • Community Grants for Activities • Waste and Recycling Services • Road and Footpath Maintenance • Environmental Sustainability Initiatives • Local Amenities and Facilities Maintenance • VIC Roads Agency Services • Centrelink Agency • Animal Control • Pet Registration • Provision of Seasonal Swimming Pools • Tourism Development • Street Cleaning • Fire Prevention and Pest Management • Volunteer Support • Grant Sourcing and Project Delivery for Community Infrastructure • Street Lighting and Signage • Emergency Management 	For Our Families  <ul style="list-style-type: none"> • Maternal Children's Health Services • Playgroups • Kindergartens • Family Services • School Crossing Supervisors • Social Support for Youth • Early Years Support 	For Our Businesses  <ul style="list-style-type: none"> • Food and Health Businesses Registration and Regulation • Business Support and Education • Business Networking Opportunities • Business Permits • Food Safety Regulation Programs • Business Assistance Grants & Streetscape Improvement Grants • Business Concierge Program for Covid Support, Business Permits and Support.
	For Our Older People and People with a Disability  <ul style="list-style-type: none"> • Referral for Aged Care and Disability Services • Social Support Groups • Personal Care and Home Care • Emergency Support • Property Maintenance • Living at Home Assessments • Delivered Meals (Meals on Wheels) • Community Transport Programs • Respite Care 	

Our values

Our values guide our behaviour and decision-making and how we lead and support our community.

1	We will proactively respond to change, are optimistic about our future and pursue continuous improvement in everything that we do.	Innovative
2	We will be responsible, take ownership of our actions and are committed to good governance, excellence, transparency, achievement of goals and advocating for our community.	Accountable
3	We will do everything within our ability to encourage and form trusting relationships, to work together as one team to achieve our goals and advocate for "One West Wimmera".	United
4	We will actively and openly consult with you and work constructively with community organisations, agencies, the business community and other levels of government to our community's benefit.	Collaborative

Council vision and goals

Our Council Plan sets out the four-year vision for the shire and the outcomes Council wants to achieve over that period. These outcomes align with key directions identified in the West Wimmera Community Vision 2041.



Goal 1 Liveable and Healthy Community	<ul style="list-style-type: none"> 1.1 Create a healthy, active, and vibrant community. 1.2 Support a safe and inclusive community. 1.3 Provide well planned and sustainable community infrastructure. 1.4 Deliver quality services that support community life. 1.5 Support and encourage our events, cultural and arts communities. 1.6 Support a prepared and resilient community. 1.7 Improve the liveability of the shire to assist in growing our population into the future.
Goal 2 Diverse and Prosperous Community	<ul style="list-style-type: none"> 2.1 Encourage and support the establishment and expansion of innovative, creative, and sustainable businesses. 2.2 Promote the Shire as a great place to visit, live and invest. 2.3 Facilitate the development of the local economy and jobs. 2.4 Create vibrant and attractive town centres. 2.5 Enhance the local road network and explore transport options. 2.6 Provide infrastructure to sustain economic activity.
Goal 3 Sustainable Environment	<ul style="list-style-type: none"> 3.1 Preserve and enhance the natural environment. 3.2 Promote sustainable environmental management practices. 3.3 Protect and promote public open space and natural assets. 3.4 Pursue alternative and sustainable energy sources.
Goal 4 Good Governance	<ul style="list-style-type: none"> 4.1 Ensure long term financial sustainability. 4.2 Engage with the community in a timely and respectful way. 4.3 Advocate for our community on issues important to our future. 4.4 Develop a high performing accountable organisation. 4.5 Maintain a rigorous risk management framework.

Budget information

2021-25 Council Plan Goals	FY22/23 Budget (\$'000)
Goal 1: Liveable and Healthy Community	\$ 3,651
Goal 2: Diverse and Prosperous Economy	\$ 14,935
Goal 3: Sustainable Environment	\$ 1,556
Goal 4: Good Governance	\$ 3,251

Goal 5 is not linked to any specific Council service areas. It is, instead, an overarching commitment by Council to proactively drive and live our values: Innovative, Accountable, United and Collaborative.

Key focus areas 2022-23

*Major Initiatives

Goal	Action	Department
Goal 1 Liveable and Healthy Community	Review and implement updated Community Strengthening Grant Program	Corporate and Community Services
	Implement new grant management software	Corporate and Community Services /Infrastructure Development & Works
	Complete Municipal Sport and Recreation Strategy (pending funding)	Corporate and Community Services
	Support outreach program	Corporate and Community Services
	Mental health training for community support workers	Corporate and Community Services
	Promote councils volunteer opportunities and training for council volunteers	Corporate and Community Services
	Quarterly list on the website of community volunteer opportunities	Corporate and Community Services
	Develop and work with other providers to provide training for volunteers	Corporate and Community Services
	Continue to maintain funding for supported playgroups to be delivered across the shire	Corporate and Community Services
	Develop a calendar of youth events across the shire in line with available funding	Corporate and Community Services
	White Ribbon Day events to be held in Edenhope and Kaniva	Corporate and Community Services
	16 Days of Activism social media program to be rolled out.	Corporate and Community Services
	Kindergarten and MCH programs to continue to roll out MARAM Framework, child Information sharing, and Child Safe Standards	Corporate and Community Services
	Ensure Communities of Respect and Equality (CoRE) action plan is maintained and being implemented.	Corporate and Community Services
	Scoping of shade over little pool at Goroce	Corporate and Community Services /Infrastructure Development & Works

	Compliance with Road Management Plan and Asset Management Plan	Infrastructure Development & Works
	<p>Seek funding if available for the following project projects:</p> <ul style="list-style-type: none"> • Edenhope football changerooms and lighting upgrade • Harrow netball/tennis courts and lighting upgrade • Edenhope Playspace • Goroake oval irrigation/fence upgrade • Apsley playground <p>Deliver projects if funding applications are successful:</p> <ul style="list-style-type: none"> • West Wimmera Cabin Project • Edenhope Caravan Park • Apsley netball/tennis court lighting upgrade • Edenhope equine facility • Enabling Tourism - Destination Harrow, and Enabling Tourism - Serviceton Railway Station* 	Corporate and Community Services /Infrastructure Development & Works
	<p>Prepare the following projects ready for future funding opportunities:</p> <ul style="list-style-type: none"> • Edenhope stadium/pool amenities upgrade (roll over from 21/22) • Kaniva bowling green and potential cover • Master plan for Kaniva Recreation Reserve • Goroake park amenities block and potential BMX track or pump track • Kaniva Splash Park * 	Corporate and Community Services /Infrastructure Development & Works
	<p>Extend Council's footpath networks:</p> <ol style="list-style-type: none"> 1. Lake Street (behind West Wimmera Rural) 2. Roach Street (Farmer Street to Webb Street) 3. Wimmera Highway (Townsend to Dixon Street Apsley) * 	Infrastructure Development & Works
	Advocate for improvements in public transport services for West Wimmera Shire.	Corporate and Community Services
	Continue to run/support WWSC/HBC companion program, volunteer taxi service in Edenhope and Kaniva, and Centre for Participation bus Kaniva - Horsham weekly	Corporate and Community Services
	Investigate alternative asset management system	Infrastructure Development & Works

	Advocate for funding support from State and Federal Governments to assist with development and ongoing childcare solutions.	Corporate and Community Services
	Seek funding for a West Wimmera Shire early year (childcare and kindergarten) strategic plan	Corporate and Community Services
	Pending pilot program outcomes, establish the Edenhope Early Childhood Service.	Corporate and Community Services
	Continue to advocate for affordable housing investment	Infrastructure Development & Works
	Create Annual Business Training Calendar	Infrastructure Development & Works
	Complete Annual Business Survey	Infrastructure Development & Works
	Investigate option for electronic 40km signage in front of Goroke College	Infrastructure Development & Works
	Advocate for secure provision of potable water for our towns.	Infrastructure Development & Works
	Provide support and encourage headspace events to be run in West Wimmera	Corporate and Community Services
	Prepare and seek funding for Goroke Library upgrade	Corporate and Community Services /Infrastructure Development & Works
	Seek funding for Community Arts Strategy	Corporate and Community Services
	Scoping of Gymbowen silo art project	
	Develop an annual events program.	Corporate and Community Services
	Develop an events calendar and allocate some events money specifically to support visual and performing arts.	Corporate and Community Services
	Review and update emergency management documents to ensure emergency preparedness	Infrastructure Development & Works
	Complete a master plan/feasibility study for Edenhope Airport	Infrastructure Development & Works
	Advocate for multi-agency building in Kaniva(CFA/SES/Ambulance) and Goroke (CFA/SES)	Infrastructure Development & Works

	Seek funding and support for a low-level river crossing in Harrow	Infrastructure Development & Works
	Instal new Benayeo bore and associated equipment for fire fighting purposes	Infrastructure Development & Works
	Work with WDA on Housing Blueprint Project	Infrastructure Development & Works
Goal 2 Diverse and Prosperous Community	Investigate extending business concierge program to help with not just businesses but any investment in the shire	Infrastructure Development & Works
	Review and update economic development strategy	Infrastructure Development & Works
	Campaign to attract businesses and families to West Wimmera	Infrastructure Development & Works
	* Complete Planning Scheme Review and update	Infrastructure Development & Works
	Review and update of business assistance policy	Infrastructure Development & Works
	Promotion of business concierge program	Infrastructure Development & Works
	Complete tourism strategy	Corporate and Community Services
	Continue Wimmera Mallee Tourism	Corporate and Community Services
	Advocate for aquaculture opportunities including the possible re-establishment of the facility near Lake Charlegrark	Infrastructure Development & Works
	Seek funding for intersection safety review in Kaniva	Infrastructure Development & Works
	*Support Installation of EV Chargers in Edenhope and Kaniva	Infrastructure Development & Works
	Complete local laws review	Infrastructure Development & Works
	Scoping of additional works at Band Park, Kaniva, including upgrade of toilets	Infrastructure Development & Works
	Scoping of additional works at Kaniva wetlands as per requests from Community	Infrastructure Development & Works
	*Deliver annual maintenance program	Infrastructure Development & Works

	Delivery annual capital works program	Infrastructure Development & Works
	*Seek funding for Hawkers - Goodwins Road upgrade	Infrastructure Development & Works
	New streetlights as prioritised	Infrastructure Development & Works
	Delivery toilet project at intersection of Lake Street and Orme Street (exact location TBC)	Infrastructure Development & Works
	Campaign for improved access to quality digital connectivity.	Infrastructure Development & Works
	Advocate for the West Grampians Pipeline Project	Infrastructure Development & Works
	Advocate for improved water pressure within towns.	Infrastructure Development & Works
	Advocate for the improvement of roads to meet requirements for road trains.	Infrastructure Development & Works
	Advocate for the continued sale and promotion of unallocated groundwater in the areas identified as still having sustainable water for sale.	Infrastructure Development & Works
	Advocate recreational water for Lake Wallace and Lake Charlegrark	Corporate and Community Services
Goal 3 Sustainable Environment	*Development of Waste Management Strategy	Infrastructure Development & Works
	Review of Domestic Animal Management Plan	Infrastructure Development & Works
	Review of Domestic Wastewater Management Plan	Infrastructure Development & Works
	Advocate for 2nd access to Lake Ratzcastle with Parks (include in advocacy plan)	Infrastructure Development & Works
	*Support activities to control pest animals in farming and township areas (continue to implement Corella Management Plan, and weeds and pest management programs)	Infrastructure Development & Works
	Advocate with DELWP to review MOU on where vegetation can be cleared.	Infrastructure Development & Works
	Work with waste management agencies to find alternative solution for grain bag disposal	Infrastructure Development & Works

	Scope possibility to access Boorooopki	Infrastructure Development & Works
	Feasibility study/plan for Wetlands Centre for Excellence.	Infrastructure Development & Works
	Scoping and seed Funding for projects from Lake Wallace Strategy (exact projects to be confirmed)	Infrastructure Development & Works
	Support renewable energy project applications	Infrastructure Development & Works
Goal 4 Good Governance	Prepare Kaniva depot upgrades as a shovel ready project	Infrastructure Development & Works
	* Upgrade heating and cooling at Kaniva Shire Hall (subject to LRCIP Funding)	Infrastructure Development & Works
	Complete implementation of Grant Guru	Infrastructure Development & Works
	*Implement Cloud Finance and Rating system (BoB)	Corporate and Community Services
	*Maintain and implement advocacy plan	Infrastructure Development & Works
	Complete 23/24 Budget and Annual Plan	Corporate and Community Services
	*Implement Project Management Framework	Infrastructure Development & Works
	*Implement Cloud Records Management System	Corporate and Community Services
	Digitisation of old shire rates books	Corporate and Community Services
	Audit into general financial controls and contracts and procurement	Corporate and Community Services
	Post implementation (new financial systems) audit	Corporate and Community Services
	Develop register to track Councils statutory obligations	Corporate and Community Services



Edenhope Office
49 Elizabeth Street, Edenhope VIC 3318
Telephone: 03 5585 9900

Kaniva Office
25 Baker Street, Kaniva VIC 3419
Telephone: 03 5392 7700

Postal Address: PO Box 201, Edenhope VIC 3318
Email: council@westwimmera.vic.gov.au
Website: www.westwimmera.vic.gov.au