

ANNUAL PLAN

2025/26

The best of country living



TABLE OF CONTENTS

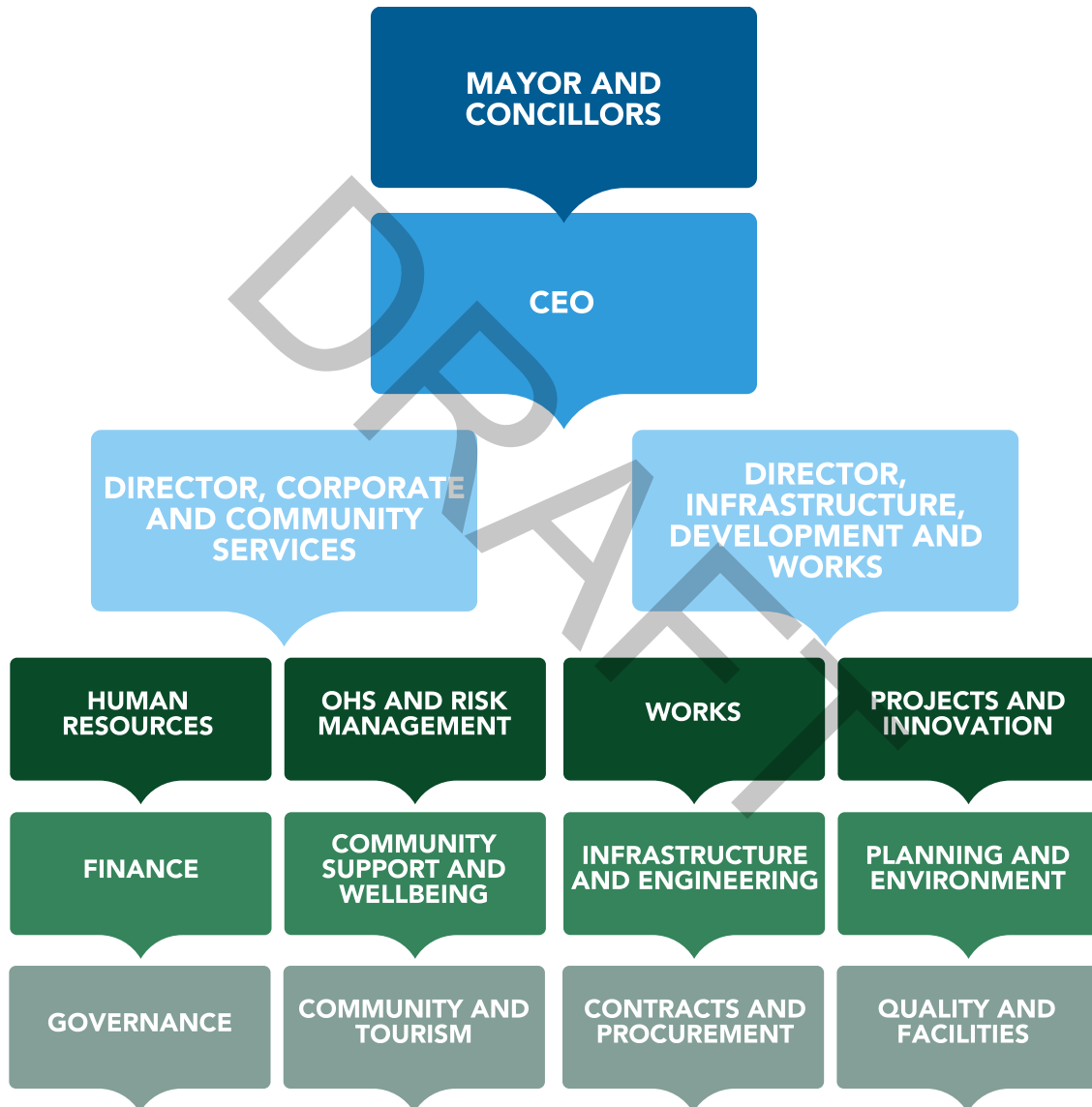
Organisational Chart West Wimmera Shire Council	3
Message from the Mayor and CEO	4
About the Annual Plan	4
Our Planning Framework	6
Our Shire Services	7
Our Values	7
Council Vision and Goals	8
Budget information	9
Key Focus Areas 2024-25	10

ACKNOWLEDGEMENT OF COUNTRY

The West Wimmera Shire Council respectfully acknowledges the Traditional Custodians of the land, and pays respects to their elders, past, present, and emerging.

ORGANISATIONAL CHART WEST WIMMERA SHIRE COUNCIL

Council is the governing body that appoints a Chief Executive Officer (CEO). The CEO has responsibility for the day-to-day management of operations in accordance with the strategic directions of the Council Plan. Two General Managers/Directors and the CEO form the Senior Management Group.



MESSAGE FROM THE MAYOR AND CEO

It is with great pride that we present the 2025–2026 Annual Plan - a roadmap for the year ahead that reflects our ongoing commitment to the sustainability, liveability, and long-term prosperity of West Wimmera Shire.

Over the past year, Council has continued to deliver key infrastructure and community-focused projects across the region. As we move into a new planning cycle, we remain focused on practical and meaningful outcomes that respond to local needs and strengthen the foundation for future growth.

A number of important projects are already underway or planned for the coming year. These include the redevelopment of the football change rooms at Edenhope Recreation Reserve and the design phase for the Kaniva Recreation Facility. We are also progressing plans for the Goroke pool and a major upgrade to the Kaniva bowling green - both subject to funding outcomes.

Community spaces continue to be enhanced, with the upgrade of the Goroke Kindergarten playground, a brand-new dog park being constructed at Kaniva, and essential works at the Kaniva and Gorokeswimmingpools.

Council remains focused on maintaining and upgrading our local road network to improve safety and connectivity across the shire. Major works planned for 2025-2026 include the reconstruction and widening of Mooree Road, upgrades to intersections at Apsley-Natimuk Road and Patyah-Bringalbert North Road, and new signage and speed limit changes at railway crossings. Subject to funding, we are also planning major upgrades to Kadnook-Connewirricoo Road.



Infrastructure works will also continue across a range of Council assets, including the connection of Council-owned properties to the Goroke sewer, drainage upgrades in Apsley, floor levelling at the Johnny Mullagh Discovery Centre at Harrow, and improvements at the Kaniva Depot.

Council is actively pursuing opportunities to support population growth and economic development. Subject to funding, we aim to deliver new workforce accommodation at Edenhope and Kaniva to assist with attracting and retaining skilled workers in our region - a critical factor in our ongoing development.

We thank our Councillors, staff, and community members for their continued dedication and collaboration. Your contributions help ensure West Wimmera remains a strong, welcoming, and forward-looking place to live.

We invite you to read this Annual Plan and share your feedback as we work together toward the year ahead.

Mayor Tim Meyer and CEO David Bezuidenhout

ABOUT THE ANNUAL PLAN

The Annual Plan sets out the activities that Council will undertake during the year to deliver the outcomes of the Council Plan 2021-2025. The annual plan works in conjunction with the Annual Report and the Budget for financial year 2025-26.

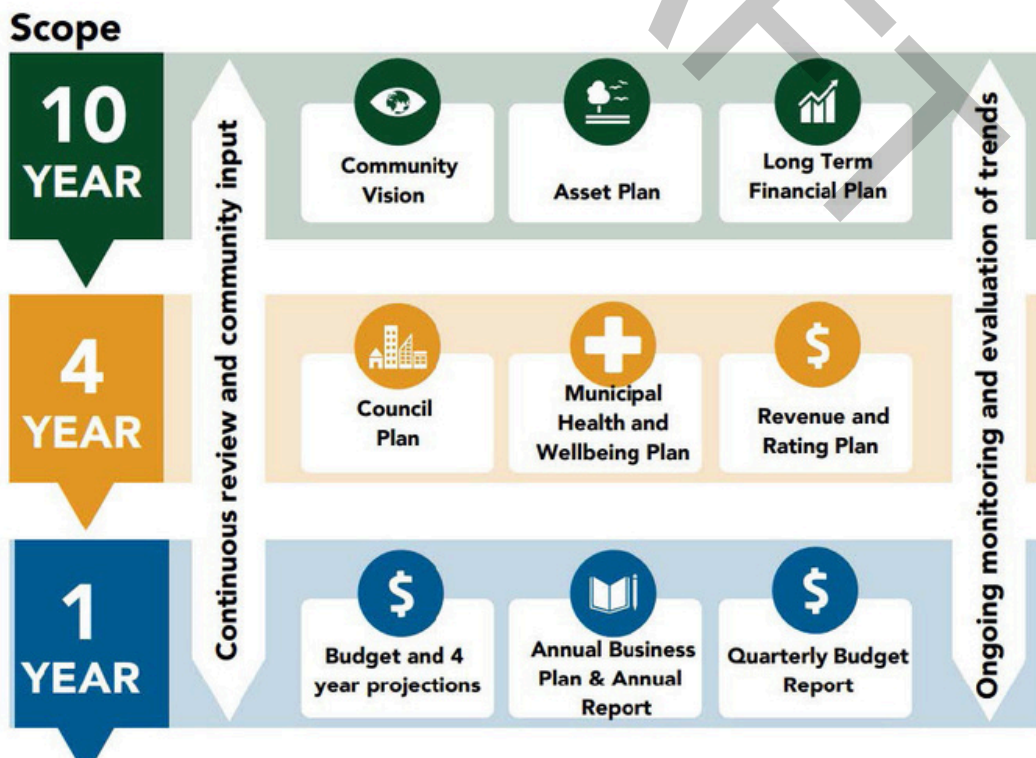
Together the following integrated documents form the local government's system of financial management:

- Council Plan 2021-25 incorporating Community Vision
- Long-term Financial Plan and Yearly Budget
- 2025-26 Annual Report and Annual Plan

The Chief Executive Officer must present a written quarterly progress report to Council outlining progress towards implementing the Annual Plan. Council may amend the Annual Plan during the year by resolution.

OUR PLANNING FRAMEWORK

Our planning framework comprises the key plans that guide our work and decision making and connects the long-term community needs and aspirations. The Council Plan is aligned with the 2041 Community Vision. The Annual Plan sits within our 1-year scope and is an annual document Council will develop to ensure that we are moving towards our goals.



OUR SHIRE SERVICES

West Wimmera Shire Council is responsible for the delivery of over 70 services across many areas, including:

FOR OUR COMMUNITY



- Building Services and Planning Permits
- Sporting Facilities
- Parks, Gardens and Playgrounds
- Council-run events
- Community grants for activities
- Waste and recycling services
- Road and footpath maintenance
- Graffiti removal
- Environmental sustainability initiatives
- Local amenities and facilities maintenance
- VIC Roads Agency Services
- Animal Control
- Pet Registration
- Provision for seasonal swimming pools
- Tourism development
- Street cleaning
- Fire prevention and pest control management
- Accommodation
- Volunteer support
- Street lighting and signage

FOR OUR FAMILIES



- Playgroups
- Kindergartens
- Family services
- School crossing supervisors
- Social support for youth
- Early years support
- Maternal Childrens health services
- Childcare - Edenhope

FOR OUR BUSINESSES



- Food and Health businesses registration and regulation
- Business Support and education
- Business networking opportunities
- Business permits
- Food safety regulation programs

OUR VALUES



Our values guide our behavior and decision-making and how we lead and support our community.

1

We will proactively respond to change, are optimistic about our future and pursue continuous improvement in everything that we do.

Innovative

3

We will do everything in our ability to encourage and form trusting relationships, to work together as one team to achieve our goals and advocate for "One West Wimmera".

United

2

We will be responsible, take ownership of our actions and are committed to good governance, excellence, transparency and advocating for our community.

Accountable

4

We will actively and openly consult with you and work constructively with community organisations, agencies, business community and other levels of government to our community's benefit.

Collaborative

COUNCIL VISION AND GOALS



Our Council Plan sets out the four-year vision for the shire and the outcomes Council wants to achieve over that period. These outcomes align with key directions identified in the West Wimmera Community Vision 2041.

GOALS

1

Liveable and Healthy Community

2

Diverse and Prosperous Community

3

Sustainable Environment

4

Good Governance

5

Our commitment - we will proactively drive and live in our values: Innovative, Accountable, United and Collaborative.

1 Liveable and Healthy Community

- 1.1 Create a healthy, active, and vibrant community.
- 1.2 Support a safe and inclusive community.
- 1.3 Provide well planned and sustainable community infrastructure.
- 1.4 Deliver quality services that support community life.
- 1.5 Support and encourage our events, cultural and arts communities.
- 1.6 Support a prepared and resilient community.
- 1.7 Improve the liveability of the shire to assist in growing our population into the future.

2 Diverse and Prosperous Community

- 2.1 Encourage and support the establishment and expansion of innovative, creative, and sustainable businesses.
- 2.2 Promote the Shire as a great place to visit, live and invest.
- 2.3 Facilitate the development of the local economy and jobs.
- 2.4 Create vibrant and attractive town centres.
- 2.5 Enhance the local road network and explore transport options.
- 2.6 Provide infrastructure to sustain economic activity.

3 Sustainable Environment

- 3.1 Preserve and enhance the natural environment.
- 3.2 Promote sustainable environmental management practices.
- 3.3 Protect and promote public open space and natural assets.
- 3.4 Pursue alternative and sustainable energy sources.

4 Good Governance

- 4.1 Ensure long term financial sustainability.
- 4.2 Engage with the community in a timely and respectful way.
- 4.3 Advocate for our community on issues important to our future.
- 4.4 Develop a high performing accountable organisation.
- 4.5 Maintain a rigorous risk management framework.

BUDGET INFORMATION

2021-25 Council Plan Goals	FY25/26 Budget (\$'000)
Goal 1: Liveable and Healthy Community	
Goal 2: Diverse and Prosperous Economy	
Goal 3: Sustainable Environment	
Goal 4: Good Governance	
Goal 5: Our Commitment	

Goal 5 is not linked to any specific Council service areas. It is, instead, an overarching commitment by Council to proactively drive and live our values: Innovative, Accountable, United and Collaborative

KEY FOCUS AREAS 2025-26

* Major Initiatives in 2025-26 Budget

Key Advocacy Focus Areas for 2025-2026

GOAL 1: Liveable and Healthy Community

Relevant Council Plan initiative	2025/2026 Action	Department
1.1.1	Continue to roll out Community Grants Program (Quick Response Grant, Sponsorships, Community Strengthening and Community Support Grant)	Corporate and Community Services
1.1.4 #	Partner with service providers to improve access to health and community services within the shire. (General Health, Oral Health, Mental Health, MCH Services, Early Years Care & Education, Youth Service)	Corporate and Community Services
1.1.8	Supporting and recognising volunteers across the shire with Annual Volunteer Morning Teas, seek funding for additional event to recognise all volunteers	Corporate and Community Services
1.2.1	Delivery of Supported Playgroups Program	Corporate and Community Services
1.2.2	Engagement with Schools and key stakeholders (health service providers, headspace) across the shire to promote Western Bulldogs Community Foundation Program.	Corporate and Community Services
1.2.2	Deliver Freeza and Engage Youth Funding through Western Bulldogs Community Foundation Program.	Corporate and Community Services
1.2.3	16 days of activism campaign with local events in November	Corporate and Community Services
1.2.5	Active Participation of CoRe alliance membership	Corporate and Community Services
1.2.7	Intergenerational playgroup/gardening program in Edenhope	Corporate and Community Services
1.2.8	Annual Working with Children's check audit	Corporate and Community Services
1.3.1	Support community groups with funding applications	Infrastructure Development & Works
1.3.1	Training for Committees of Management (DEECA) & Modern Rules for Committee Training	Corporate and Community Services

1.3.2	Johnny Mullagh Discovery Centre Floor Leveling Connection of Council properties into Goroke Sewer Kaniva Pool Painting Goroke Pool Painting Apsley Men's Toilet Repair Goroke Pool Leak repair & Water Chlorinator Kaniva Depot - Fuel Tank Removal	Infrastructure Development & Works
1.3.2	Complete Fire Fighting Facilities Upgrade at Edenhope Aerodrome (funded)	Infrastructure Development & Works
1.3.2	Complete asset inspections as per plan	Infrastructure Development & Works
1.3.2	Seek funding for solar on government owned buildings (if available) – Potentially - Kaniva Hub, Pools	Infrastructure Development & Works
1.3.2 #	Advocate for upgrading – Rail crossing signals at Serviceton and pedestrian crossings at Maddern and Farmer Street Kaniva	Infrastructure Development & Works
1.3.2 *	Delivery of Goroke Kinder Playground Project Delivery of Kaniva Dog Park Delivery of Kaniva Recreation Reserve Facilities Design Delivery of Goroke Aquatic Facility Design (Subject to Funding) Advocate and Seek funding for Streetscapes & Delivery of Housing projects, Goroke Kinder Building Upgrade, Edenhope Childcare Playground, Kaniva Pool Upgrade, Kaniva Recreation Reserve Facility upgrades and other key projects as they arise.	Infrastructure Development & Works
1.3.3 *	Delivery of Edenhope Football Changerooms Delivery of Serviceton Silo Art Kaniva Bowling Green (Subject to Funding) Goroke Irrigation & Lighting (Subject to Funding) Continue to seek suitable grant funding as it becomes available for community infrastructure projects Including: Edenhope Recreation Reserve Oval Lighting Edenhope Netball Court and Lighting Upgrade Apsley Recreation Reserve Oval Lighting Additional Projects to be added as they are approved through the PMO	Infrastructure Development & Works
1.3.5 #	Advocate for the requirement for school bus services for all school children	Corporate and Community Services
1.3.5	Continue to run/support and promote volunteer taxi service in Kaniva and centre for participation bus Kaniva - Horsham weekly	Corporate and Community Services
1.3.5	Continue to run/support and promote companion transport program Harrow, Kaniva and Edenhope	Corporate and Community Services
1.4.2 #	Meeting with by5 every 6 months to assist with regional advocacy for childcare/early years services	Corporate and Services
1.4.3 #	Advocate for childcare in Goroke	Corporate and Community Services
1.4.5	Training Calendar on Councils website with business training opportunities	Infrastructure Development & Works
1.4.7	Continue to partner with Working with By5 project	Corporate and Community Services
1.4.9 #	Advocate for the Requirement for potable water in Harrow, Goroke & Apsley	Infrastructure Development & Works

1.5.1	Continuing partnership with Horsham Rural City Council to provide Library Services under the Wimmera Libraries banner	Corporate and Community Services
1.6.1	Community Fire Awareness, through social media and Wimmera Emergency Management Team	Corporate and Community Services
1.6.2	Attend meetings and actively participate in the Wimmera Emergency Management Resources Sharing Partnership and work with the staff or the Wimmera Emergency Management Team	Corporate and Community Services
1.6.2 #	Advocate for Multi – Agency depot – Kaniva (CFA, SES & Ambulance) and Goroke (CFA & SES)	Corporate and Community Services
1.6.3	Attend and actively participate in the planning of the Grampians Regional Emergency Management team regional and local plans	Corporate and Community Services
1.6.4	Plan for and deliver emergency services as required in conjunction with REMPC. as per the 3 tiers of emergency management planning in Victoria and the Emergency Management act 2013	Corporate and Community Services
1.7.1	Involvement in Wimmera Southern Mallee Development Housing Project West Wimmera Key Worker Accommodation Project Delivery (subject to funding) Kaniva Airport Redevelopment (subject to funding)	Infrastructure Development & Works

GOAL 2: Diverse and Prosperous Community

Relevant Council Plan initiative	2025/2026 Action	Department
2.1.1	Marketing Campaign on social media and council website to attract businesses and families to West Wimmera	Infrastructure Development & Works
2.1.3	Begin Implementation of Recommendations from planning scheme Review: Complete Edenhope Flood Investigation Complete Apsley Flood Investigation Update flood controls for Harrow and Chetwynd (add into planning scheme) Targeted settlement plans for larger towns (Edenhope, Kaniva, Gorokey, Apsley & Harrow)	Infrastructure Development & Works
2.1.4	Continue to delivery Business Assistance Grant Program	Infrastructure Development & Works
2.1.4	Supporting Industrial Development across the shire	Infrastructure Development & Works
2.1.4	Continue to deliver Streetscape Grant Program	Infrastructure Development & Works
2.1.5	Support to Birchip Cropping Group Young Farmers Network (west Wimmera Group)	Infrastructure Development & Works
2.2.2	Active Membership to Wimmera Grampians Tourism (Visitor Economy Partnership)	Corporate and Community Services
2.2.3	Seek funding for Glenelg River Walking Trail	Corporate and Community Services
2.2.5 #	Advocate to attract the required skilled workforce to the region. e.g. health care, childcare, agriculture.	Infrastructure Development & Works
2.4.1	Seek external funding to implement Kaniva and Edenhope Streetscape Plans	Infrastructure Development & Works
2.4.5	Undertake review of streetscapes (Harrow, Apsley, Serviceton, Dergholm and Gorokey) (subject to funding)	Infrastructure Development & Works
2.4.6	Seek funding for Lions Park Edenhope Project Delivery of streetscape improvements (Harrow, Apsley, Serviceton, Dergholm and Gorokey)	Infrastructure Development & Works
2.5.1	Complete Review of Road Management Plan (required within 12 months of new Council)	Infrastructure Development & Works
2.5.2	Complete Road Management Plan Inspections	Infrastructure Development & Works

2.5.2	Develop Councils 26/27 reseal and resheet program	Infrastructure Development & Works
2.5.2 *	Delivery of 25/26 reseal program	Infrastructure Development & Works
2.5.2 *	Delivery of 25/26 resheet program	Infrastructure Development & Works
2.5.3	Develop the 26/27 Annual Capital Works program	Infrastructure Development & Works
2.5.3 *	Deliver 24/25 Annual Capital Works program Mooree Road (Reconstruction & Widening) Local Road Railway Crossings - Signage and speed limit Lake St, Edenhope - Wombat crossing and speed limit Apsley Natimuk Rd and Patyah Bringalbert North Rd corner	Infrastructure Development & Works
2.5.5 #	Advocate for additional external funding for roads and bridges.	Infrastructure Development & Works
2.5.6 #	Advocate for Regional Roads Victoria to improve the quality of state roads throughout our shire.	Infrastructure Development & Works
2.5.7	Seek funding if available for Kadnook-Connewirricoo Road and others depending on eligibility.	Infrastructure Development & Works
2.6.1 #	Advocate for improved access to quality digital connectivity.	Infrastructure Development & Works
2.6.2 #	Advocate for West Grampians Pipeline	Infrastructure Development & Works
2.6.3 #	Advocate for improved water pressure within towns.	Infrastructure Development & Works
2.6.4 #	Advocate for the improvement of roads to meet requirements for road trains.	Infrastructure Development & Works

GOAL 3: Sustainable Environment

Relevant Council Plan initiative	2025/2026 Action	Department
3.1.1 *	Develop Waste Management Plan & Feasibility	Infrastructure Development & Works
3.1.7 #	Advocate for Improvement of infrastructure (i.e. Tables, chairs, signage) on public land across West Wimmera	Corporate and Community Services
3.2.1	Roll out annual corella management plan	Infrastructure Development & Works
3.2.1 *	Delivery Council Roadside Weeds and Pest Program	Infrastructure Development & Works
3.2.1	Review Corella Management Plan	Infrastructure Development & Works
3.2.2	Landcare facilitator - Capacity building and support for local Landcare groups & roadside weed management across the shire	Infrastructure Development & Works
3.2.2	Work with partner agencies on roadside vegetation management on road construction projects	Infrastructure Development & Works
3.3.4	Delivery - Boat Ramp Extension Seek funding for Jetty Hand Rail Project	Infrastructure Development & Works
3.3.4 #	Advocate for ongoing funding for maintenance at Lake Wallace (including Weed Cutting when required)	Infrastructure Development & Works
3.4.1 #	Use environmentally sustainable design in projects across the shire	Infrastructure Development & Works
3.4.2 #	Investigate the potential for micro-grids in industrial areas and towns.	Infrastructure Development & Works

GOAL 4: Good Governance



Relevant Council Plan initiative	2025/2026 Action	Department
4.1.1 *	Complete Long Term Financial Plan	Corporate and Community Services
4.1.3	Quarterly Financial Statement Reporting	Corporate and Community Services
4.1.5 #	Advocate for and Seek funding for shovel ready projects	Infrastructure Development & Works
4.1.5	Maintain Grant Guru subscription to assist council staff and community members to source suitable grant funding	Infrastructure Development & Works
4.1.5	Support community members to source suitable grant funding with Grant Guru	Corporate and Community Services
4.1.5	Seek funding for scoping and planning of Goroke and Edenhope Pool	Infrastructure Development & Works
4.1.7	Continue to deliver and support the innovation platform	Infrastructure Development & Works
4.2.3	Continue to deliver regular communication via council website and channels	Corporate and Community Services
4.3.1	Prepare a document setting out key advocacy issues for West Wimmera Shire.	Infrastructure Development & Works
4.3.2 #	Actively participate on regional and sector bodies and forums	Corporate and Community Services
4.4.1	Complete new 4-year Workforce Plan in line with Local Government Act Requirements	Corporate and Community Services
4.4.6	Develop the 2026/27 Annual Plan	Infrastructure Development & Works
4.4.6	Policy Review - Advocacy Policy	Infrastructure Development & Works
4.4.6 *	Complete the 2025-2029 Council Plan	Infrastructure Development & Works
4.4.6 *	Complete 2025-2029 Health and Wellbeing Plan (included in Council Plan)	Infrastructure Development & Works
4.4.6	Complete 2024/25 Annual Report	Corporate and Community Services
4.4.6	Complete 2024/25 Annual Financial Statements	Corporate and Community Services
4.4.7	Training and Implementation of the Project Management Framework across all departments	Infrastructure Development & Works
4.4.9 *	Transition Aged & Disability Care Service to new provider by October 1st 2025	Corporate and Community Services



CONTACT US

-  council@westwimmera.vic.gov.au
-  www.westwimmera.vic.gov.au/
-  13 WWSC (13 99 72)

CONNECT WITH US

-  facebook.com/westwimmerashire
-  www.instagram.com/westwimmera



Postal

PO Box 201 Edenhope, VIC 3318



Kaniva

25 Baker Street, Kaniva VIC 3419



Edenhope

49 Elizabeth Street, Edenhope, VIC 3318