



DO NOT SCALE DRAWINGS

BUILDER TO VERIFY ALL WORK  
INCLUDING DIMENSIONS AND LEVELS  
BEFORE BUILDING COMMENCES

VIC REG NO  
DP-AD 59100

ILLUSTRATION  
ONLY

KANIVA CARAVAN PARK ABLUTIONS BLOCK

KANIVA

**ALEXSTAR**  
BUILDING DESIGN

e geoff@alexstar.com.au  
mob 0400 251 245

KANIVA

FINISHES SCHEDULE PREFIXES

B	BALUSTRADE
BEN	BENCHTOP
CAB	CABINETRY
CF	CEILING FINISH
EL	ELECTRICAL
FF	FLOOR FINISH
FR	FRAMING
GF	GENERAL FINISH
GN	GENERAL NOTE
H	HEATING
J	JOINERY
P	POOL
PL	PLUMBING
RF	ROOFING
SF	SOFT FURNISHINGS
SITE	SITEWORKS
SL	SOFFIT LINING
SS	STRUCTURE
SV	SERVICES
WDF	WINDOW FRAMING
WF	WALL FINISH
WP	WALL PLINTH/BANDING

REVISION SCHEDULE

NUMBER	DATE	DESCRIPTION
A	23/3/21	FOR INITIAL COMMENT
B	04/10/21	FOR TENDER
C	13/10/21	CERTAIN NOTES EDITIED, DETAILS EDITED, ELEVATIONS EDITED, STORAGE UNIT ADDED, END PANEL ADDED IN LAUNDRY, TAPS ADDED, THRESHOLD RAMPS ADDED, BBQ COUNTER EDITED, WINDOW AND DOOR SCHEDULE EDITED, KEYNOTE EDITED, VANITY EDITED AND FRAMING ADDED, KEYNOTE EDITED, NORTH CHANGED, MOVED DOWNPIPE, MOVED FOOTING RAMP, EDITED SHOWER FOOTING AREA
D		
E		
F		
G		
H		
I		
J		
K		

ROOM SCHEDULE							
LEVEL	NAME	AREA	PERIMETER	FLOOR FINISH	CLASS	CEILING FINISH	BASE FINISH
GROUND FLOOR	VERANDAH	37 m²	44.5 m	CONCRETE	10	6MM FRC SHEET WITH 'H' MOULD	CONCRETE
GROUND FLOOR	OUTDOOR BBQ	24 m²	22.2 m	CONCRETE	10	6MM FRC SHEET WITH 'H' MOULD	CONCRETE
GROUND FLOOR	FEMALE AMENITIES	23 m²	28.7 m	VINLY WITH 100 COVE	10	13MM WR PLASTERBOARD	CONCRETE
GROUND FLOOR	STORE	4 m²	8.5 m	VINYL WITH 100 COVE	10	13MM WR PLASTERBOARD	CONCRETE
GROUND FLOOR	LH ACCESSIBLE	7 m²	10.5 m	VINYL WITH 100 COVE	10	13MM WR PLASTERBOARD	CONCRETE
GROUND FLOOR	LAUNDRY	10 m²	14.5 m	VINYL WITH 100 COVE	10	13MM WR PLASTERBOARD	CONCRETE
GROUND FLOOR	MALE AMENITIES	14 m²	16.0 m	VINLY WITH 100 COVE	10	13MM WR PLASTERBOARD	CONCRETE
		119 m²	144.8 m				
		119 m²	144.8 m				

BUILDING AREAS

LEVEL	NAME	AREA
-------	------	------

SHEET LIST

SHEET NUMBER	SHEET NAME
--------------	------------

0	TITLE
00	COVER
WD01	SITE PLAN
WD02	GROUND FLOOR PLAN
WD03	ELEVATIONS
WD04	INTERNAL ELEVATION
WD05	INTERNAL ELEVATION
WD06	INTERNAL ELEVATION
WD07	INTERNAL ELEVATION
WD08	DETAILS
WD09	SECTIONS
WD10	SUBFLOOR
WD11	WALL FRAME
WD12	WET AREAS
WD13	NOTES
WD14	STRUCTURE
WD15	ACCESS
WD16	ACCESS

WINDOW SCHEDULE								
LEVEL	MARK	TYPE	HEIGHT	WIDTH	SILL HEIGHT	HEAD HEIGHT	COMMENTS	ROOM
GROUND FLOOR	1	18.06 AFW	1800	600	600	2400	OBSCURE FIXED GLAZED	FEMALE AMENITIES
GROUND FLOOR	2	09.04.5 AFW	900	450	1500	2400	OBSCURE FIXED GLAZED	VERANDAH
GROUND FLOOR	3	09.04.5 AFW	900	450	1500	2400	OBSCURE FIXED GLAZED	VERANDAH
GROUND FLOOR	4	18.06 AFW	1800	600	600	2400	OBSCURE FIXED GLAZED	
GROUND FLOOR	5	06.09 AFW	600	900	1800	2400	OBSCURE FIXED GLAZED	
GROUND FLOOR	6	09.06 AFW	900	600	1500	2400	OBSCURE FIXED GLAZED	
GROUND FLOOR	7	09.09 AFW	900	900	1500	2400	OBSCURE FIXED GLAZED	
GROUND FLOOR	8	09.09 AFW	900	900	1500	2400	OBSCURE FIXED GLAZED	
GROUND FLOOR	9	09.09 AFW	900	900	1500	2400	OBSCURE FIXED GLAZED	
GROUND FLOOR	10	09.09 AFW	900	900	1500	2400	OBSCURE FIXED GLAZED	
GROUND FLOOR	11	09.06 AFW	900	600	1500	2400	OBSCURE FIXED GLAZED	
GROUND FLOOR	12	09.06 AFW	900	600	1500	2400	OBSCURE FIXED GLAZED	

DOOR SCHEDULE								
LEVEL	MARK	TYPE	WIDTH	HEIGHT	SILL HEIGHT	HEAD HEIGHT	COMMENTS	ROOM
GROUND FLOOR	1	2040.920	920	2040	0	2040	SOLID DURACOAT WITH MESH HIGHLIGHT	VERANDAH
GROUND FLOOR	2	2040.920	920	2040	0	2040	SOLID DURACOAT WITH MESH HIGHLIGHT	LAUNDRY
GROUND FLOOR	3	2040.920	920	2040	0	2040	SOLID DURACOAT WITH MESH HIGHLIGHT	LH ACCESSIBLE
GROUND FLOOR	4	2040.920	920	2040	0	2040	SOLID DURACOAT WITH MESH HIGHLIGHT	VERANDAH
GROUND FLOOR	5	2040.920	920	2040	0	2040	SOLID DURACOAT WITH MESH HIGHLIGHT	
GROUND FLOOR	6	06.17 LAM	600	1700	0	1700	LAMI PANEL	MALE AMENITIES
GROUND FLOOR	7	06.17 LAM	600	1700	0	1700	LAMI PANEL	MALE AMENITIES
GROUND FLOOR	8	06.17 LAM	600	1700	0	1700	LAMI PANEL	MALE AMENITIES
GROUND FLOOR	9	06.17 LAM	600	1700	0	1700	LAMI PANEL	MALE AMENITIES
GROUND FLOOR	10	06.17 LAM	600	1700	0	1700	LAMI PANEL	FEMALE AMENITIES
GROUND FLOOR	11	06.17 LAM	600	1700	0	1700	LAMI PANEL	FEMALE AMENITIES
GROUND FLOOR	12	06.17 LAM	600	1700	0	1700	LAMI PANEL	FEMALE AMENITIES
GROUND FLOOR	13	06.17 LAM	600	1700	0	1700	LAMI PANEL	FEMALE AMENITIES
GROUND FLOOR	14	06.17 LAM	600	1700	0	1700	LAMI PANEL	FEMALE AMENITIES
GROUND FLOOR	15	06.17 LAM	600	1700	0	1700	LAMI PANEL	FEMALE AMENITIES

REVISIONS

This drawing and associated drawings in the drawing set ("the documents") are copyright © Alexstar Enterprises PTY LTD ("Alexstar Building Designs"). Do not copy or reproduce for any purpose without the prior written consent of Alexstar Building Designs. All rights are reserved. This building has been designed with standard loadings only. specific loads like waterbeds, solar panels and A/C systems are not included unless specifically noted. All colours and materials are indicative only until selections. All 3D images are indicative only for illustration purposes. Furniture and cabinetry are drawn for illustration purposes only. Selections will take precedence over anything shown for illustration.

KANIVA CARAVAN PARK

KANIVA

SCALE

(A3)

DRAWING

TITLE

ISSUE:

DESIGN

PROJECT NUMBER

18-21

DATE

13/10/21

NO

0

DO NOT SCALE DRAWINGS

BUILDER TO VERIFY ALL WORK INCLUDING DIMENSIONS AND LEVELS BEFORE BUILDING COMMENCES



VIC REG DP-AD 59100

geoff@alexstar.com.au  
0400 251 245

DO NOT SCALE  
DRAWINGS

BUILDER TO VERIFY ALL WORK  
INCLUDING DIMENSIONS AND  
LEVELS  
BEFORE BUILDING  
COMMENCES

This drawing and associated drawings in the drawing set ("the documents") are copyright © Alexstar Enterprises PTY LTD ("Alexstr Building Designs"). Do not copy or reproduce for any purpose without the prior written consent of Alexstar Building Designs. All rights are reserved. This building has been designed with standard loadings only, specific loads like waterbeds, solar panels and A/C systems are not included unless specifically noted. All colours and materials are indicative only until selections. All 3D images are indicative only for illustration purposes. Furniture and cabinetry are drawn for illustration purposes only. Selections will take precedence over anything shown for illustration.

REVISIONS

REV C  
13/10/21

KANIVA CARAVAN  
PARK

ABLUTIONS BLOCK

KANIVA

PROJECT NUMBER  
18-21

DATE  
13/10/21

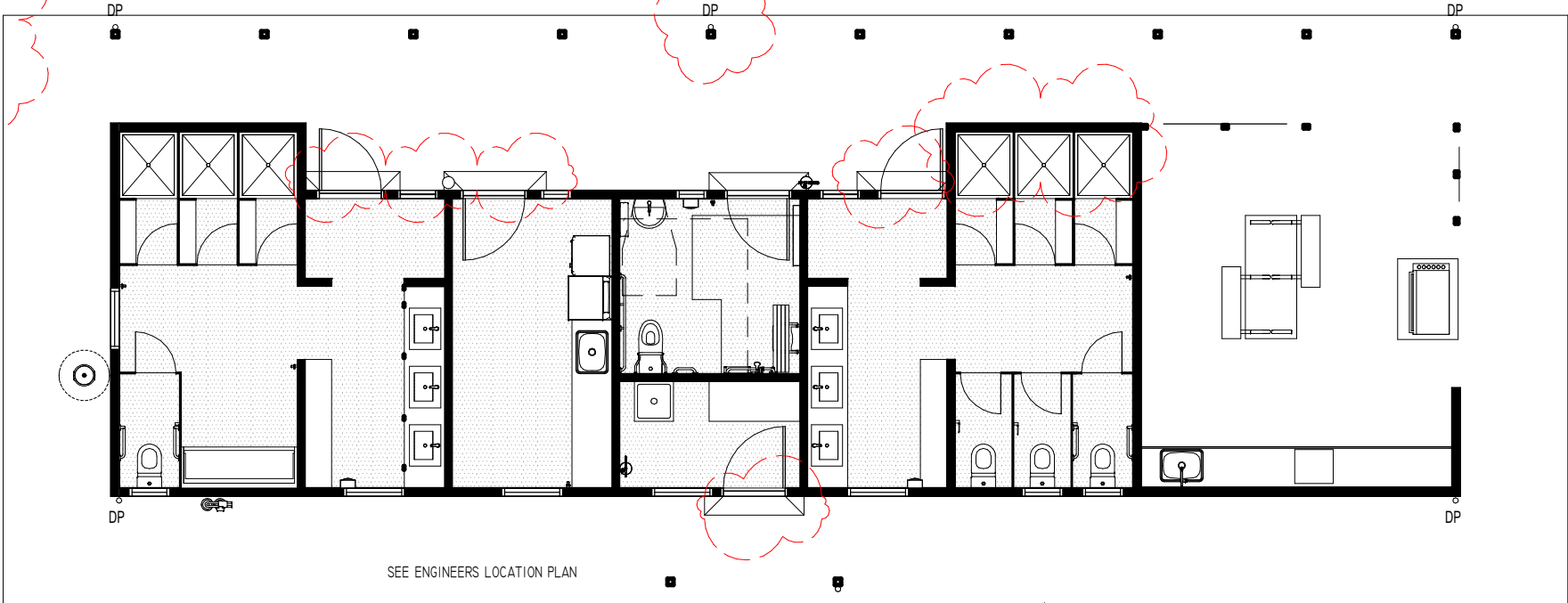
SCALE  
1 : 100 (A3)

DRAWING  
SITE PLAN

ISSUE:  
DESIGN

NO  
WD01

VIC REG  
DP-AD 59100



1600 PERIMETER PAVING

SITE NOTES

SITE WORKS, LEVELS AND STORM WATER DRAINAGE AS NOTED, WHERE ENGINEERS REPORT AVAILABLE, ENGINEERS DETAILS TAKE PRECEDENCE  
BUILDER TO CONFIRM TBM AND FINISHED FLOOR LEVELS PRIOR TO COMMENCING  
ALL TRADES TO ENSURE THAT THEY HAVE THE CURRENT DIAL BEFORE YOU DIG INFORMATON PRIOR TO COMMENCING SITE WORKS

TBM & FFL SUBJECT TO ENGINEERS SITE AND DRAINAGE PLAN

SITE CONDITIONS

CORROSION ZONE NA  
DESIGN WIND SPEED N3  
BUSHFIRE ZONE (BAL) TBA  
ENCUMBRANCE NO

CORROSION SEVERE = LESS THAN 1KM FROM BREAKING SURF, OR 100M FROM NON-BREAKING SURF  
CORROSION MODERATE = GREATER THAN 1KM FROM BREAKING SURF OR 100M FROM NON-BREAKING SURF



## DO NOT SCALE DRAWINGS

BUILDER TO VERIFY ALL WORK  
INCLUDING DIMENSIONS AND  
LEVELS  
BEFORE BUILDING  
COMMENCES

### FLOOR PLAN NOTES

ALL WORKS TO BE CARRIED OUT IN ACCORDANCE WITH THE NCC AND  
RELEVANT AUSTRALIAN STANDARDS AT THE DATE OF DEVELOPMENT  
APPLICATION

WRITTEN DIMENSIONS TAKE PRECEDENCE OVER SCALED DIMENSIONS. IF  
DIMENSIONS ARE UNCLEAR, CONTACT THIS OFFICE FOR CLARIFICATION.

ALL TRADES TO CHECK ALL INFORMATION PRIOR TO COMMENCING OR  
ORDERING MATERIALS. TRADES ARE RESPONSIBLE FOR THE BUILDABILITY  
OF THEIR AREA OF EXPERTISE AND TO PROVIDE ALL PRODUCTS NECESSARY  
FOR THE FINAL FINISHED CONSTRUCTION.

DIMENSIONS WITH ARROW HEADS GENERALLY FINISHES DIMENSIONS.  
DIMENSIONS WITH DIAGONAL TICK MARK TO STRUCTURAL MATERIALS  
WHERE UNCLEAR - CONTACT THIS OFFICE

THE DESIGNER DOES NOT TAKE THE RESPONSIBILITY OF THE BUILDER. IT  
IS THE RESPONSIBILITY OF THE BUILDER TO ENSURE ALL INFORMATION IS  
CORRECT PRIOR TO CONSTRUCTION AND ENGAGEMENT OF SUPPLIERS.  
THE BUILDER IS TO ENSURE THAT ALL ASPECTS OF THE BUILDING ARE  
BUILDABLE AND TO PROVIDE ALL NECESSARY FITTINGS, FIXTURES AND  
MATERIALS TO ENSURE THAT THE BUILDING IS COMPLETE.

WHERE PRODUCTS ARE TO BE INSTALLED TO MANUFACTURERS  
SPECIFICATION, IT IS THE BUILDER'S RESPONSIBILITY TO ENSURE THOSE  
DETAILS ARE FOLLOWED. WHERE AN AUSTRALIAN STANDARD OR  
REQUIREMENT OF THE APPROPRIATE LEGISLATION IS TO BE FOLLOWED, IT  
IS THE BUILDER'S RESPONSIBILITY TO ENSURE THE CORRECT INSTALLATION  
AND PROCEDURES ARE FOLLOWED.

DOWNPINES TO BE PROVIDED AT MAXIMUM 12M SPACING AND ADJACENT TO  
VALLEY GUTTERS. ALL BOX GUTTERS TO HAVE MINIMUM 90MM DOWNPIPES  
ALL BOX GUTTERS TO HAVE OVERFLOW DEVICES  
ALL FASCIA GUTTERS TO PROVIDE OVERFLOWS AS PER THE DETAILS ON  
THE GUTTERS AND OVERFLOWS NOTES. WHERE POSSIBLE USE STRATCO  
DIMPLED STEEL FASCIA BEHIND GUTTERS

BUILDER TO CHECK ALL WINDOW AND DOOR SIZES - ALL HEADS TO ALIGN  
(EXCEPT WHERE SPECIFICALLY SHOWN AS BENCH HEIGHT WINDOWS OR  
HIGH/LOW LEVEL WINDOWS) CHECK WINDOW/DOOR SCHEDULE -  
ADJUSTMENTS PERMITTED TO MATCH BRICK COURSING AS NECESSARY

WINDOWS TO COMPLY WITH AS 2047, AND GLASS TO COMPLY WITH AS 1288

TERMITE TREATMENT TO AS 3660

ENCLOSED WC AREAS TO BE PROVIDED WITH ESCAPE HINGES TO THE DOOR,  
OR THE DOOR SHALL SLIDE OR SWING OUT OF THE ENCLOSURE

### ENERGY NOTES

#### CLASS 10 AMENITIES - EXEMPT FROM ENERGY REQUIREMENTS

#### BUILDING FABRIC

PROVIDE NOMINAL INSULATION AS BELOW  
R2.5 INSULATION TO EXTERNAL WALL CAVITIES, BREATHABLE SISILATION  
R4.0 INSULATION TO CEILING CAVITIES, INCLUDING OUTDOOR BBQ AREA  
R2.0 INSULATION TO INTERNAL WALLS

This drawing and associated  
drawings in the drawing set ("the  
documents") are copyright ©  
Alexstar Enterprises PTY LTD  
("Alexstar Building Designs"). Do  
not copy or reproduce for any  
purpose without the prior written  
consent of Alexstar Building  
Designs. All rights are reserved.  
This building has been designed  
with standard loadings only,  
specific loads like waterbeds,  
solar panels and A/C systems are  
not included unless specifically  
noted. All colours and materials  
are indicative only until  
selections. All 3D images are  
indicative only for illustration  
purposes. Furniture and cabinetry  
are drawn for illustration purposes  
only. Selections will take  
precedence over anything  
shown for illustration.

#### REVISIONS

REV C  
13/10/21

KANIVA CARAVAN  
PARK  
ABLUTIONS BLOCK

KANIVA

PROJECT NUMBER  
18-21

DATE  
13/10/21

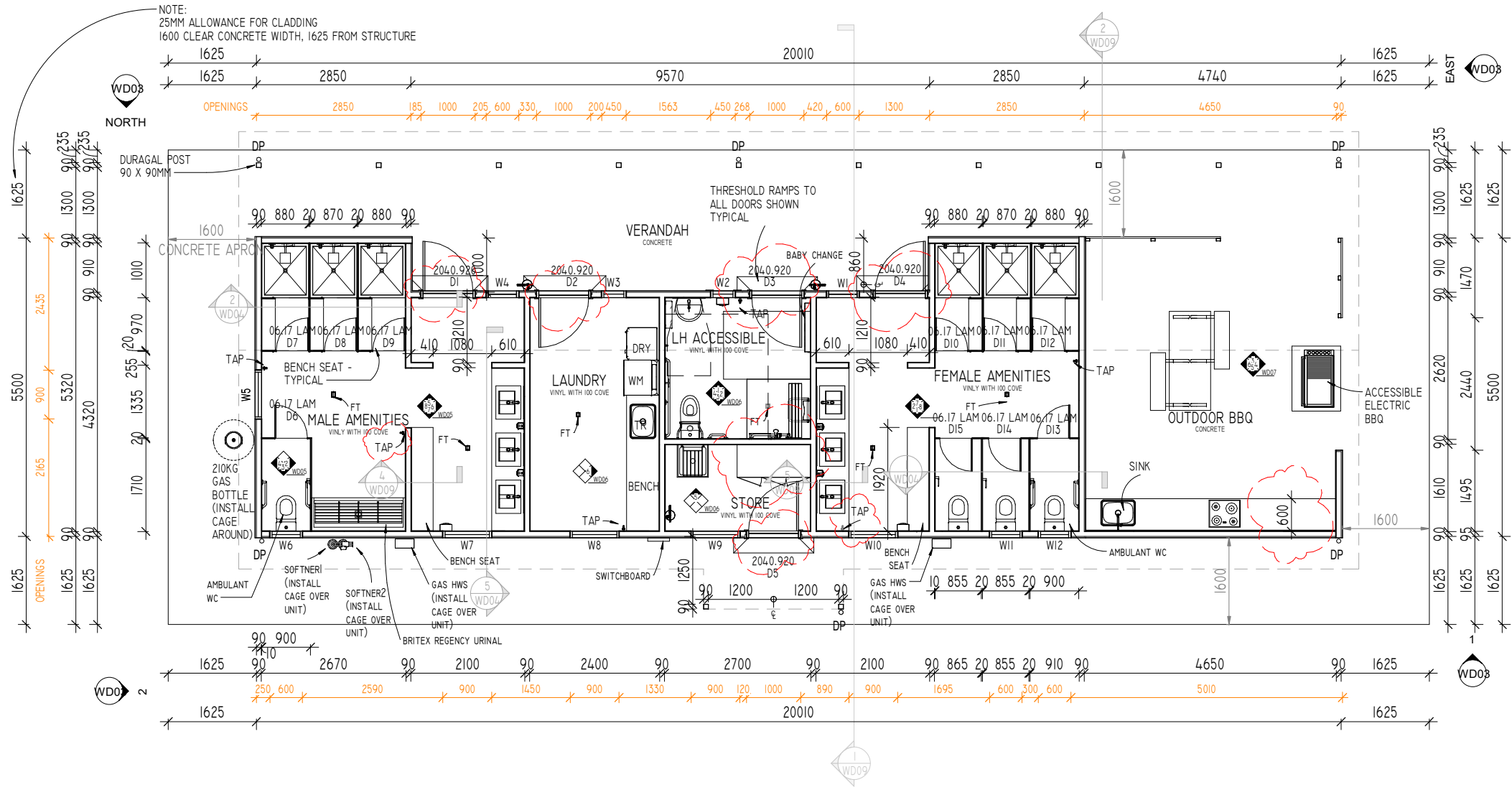
SCALE  
1 : 100 (A3)

DRAWING  
GROUND FLOOR PLAN

ISSUE:  
DESIGN

NO  
WD02

VIC REG  
DP-AD 59100



GROUND FLOOR  
1 : 100

DO NOT SCALE  
DRAWINGS

BUILDER TO VERIFY ALL WORK  
INCLUDING DIMENSIONS AND  
LEVELS  
BEFORE BUILDING  
COMMENCES

This drawing and associated drawings in the drawing set ("the documents") are copyright © Alexstar Enterprises PTY LTD ("Alexstr Building Designs"). Do not copy or reproduce for any purpose without the prior written consent of Alexstar Building Designs. All rights are reserved. This building has been designed with standard loadings only, specific loads like waterbeds, solar panels and A/C systems are not included unless specifically noted. All colours and materials are indicative only until selections. All 3D images are indicative only for illustration purposes. Furniture and cabinetry are drawn for illustration purposes only. Selections will take precedence over anything shown for illustration.

REVISIONS

REV C  
13/10/21

KANIVA CARAVAN  
PARK  
ABLUTIONS BLOCK

KANIVA

PROJECT NUMBER  
18-21

DATE  
13/10/21

SCALE  
1 : 100 (A3)

DRAWING  
ELEVATIONS

ISSUE:  
DESIGN

NO  
WD03

VIC REG  
DP-AD 59100

FINISHES SCHEDULE

COLORBOND ROOF - WOODLAND GREY  
COLORBOND FASCIAS AND GUTTERS - SURFMIST  
WINDOWS - ALUMINIUM - WOODLAND GREY  
EXTERNAL CLADDING - JH AXON 400 SMOOTH

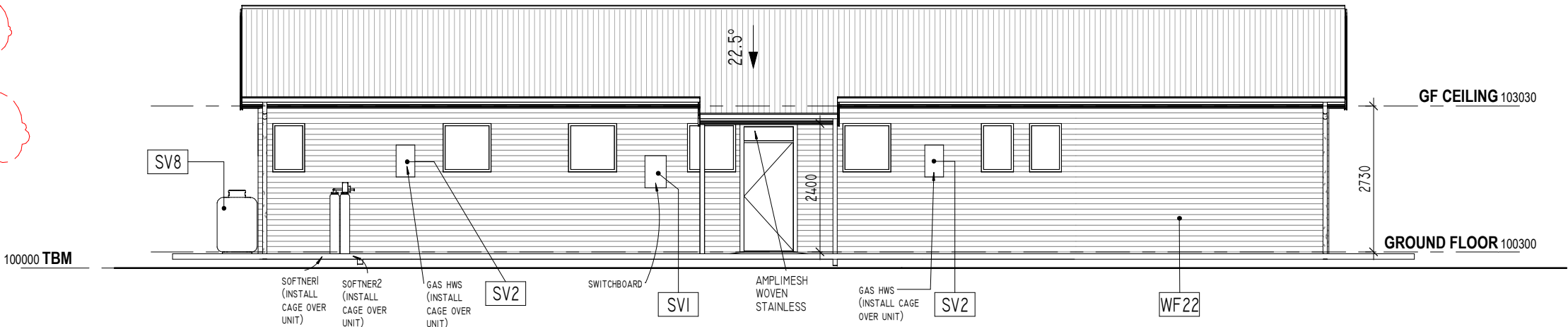


NORTH ELEVATION  
1 : 100

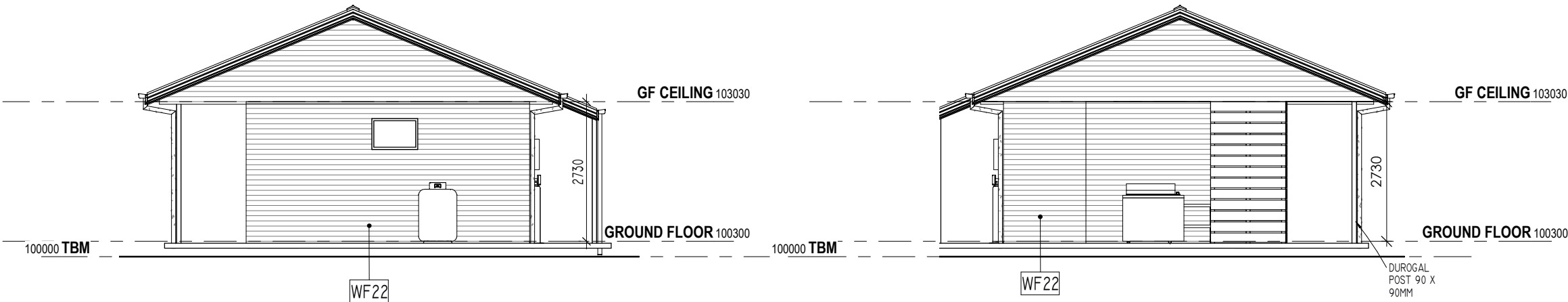
KEYNOTES

CODE DESCRIPTION

RF1 COLORBOND CUSTOM ORB  
RF6 STEEL FASCIA  
RF12 SLOTTED D GUTTER  
RF25 COLORBOND RIDGE CAP  
SVI METER BOXES  
SV2 HOT WATER SERVICE  
SV8 GAS BOTTLES  
WF22 AXON 400 SMOOTH



SOUTH ELEVATION  
1 : 100



WEST ELEVATION  
1 : 100

EAST ELEVATION  
1 : 100

DO NOT SCALE  
DRAWINGS

BUILDER TO VERIFY ALL WORK  
INCLUDING DIMENSIONS AND  
LEVELS  
BEFORE BUILDING  
COMMENCES

This drawing and associated drawings in the drawing set ("the documents") are copyright © Alexstar Enterprises PTY LTD ("Alexstar Building Designs"). Do not copy or reproduce for any purpose without the prior written consent of Alexstar Building Designs. All rights are reserved. This building has been designed with standard loadings only, specific loads like waterbeds, solar panels and A/C systems are not included unless specifically noted. All colours and materials are indicative only until selections. All 3D images are indicative only for illustration purposes. Furniture and cabinetry are drawn for illustration purposes only. Selections will take precedence over anything shown for illustration.

REVISIONS

REV C  
13/10/21

KANIVA CARAVAN  
PARK  
ABLUTIONS BLOCK

KANIVA

PROJECT NUMBER  
18-21

DATE  
13/10/21

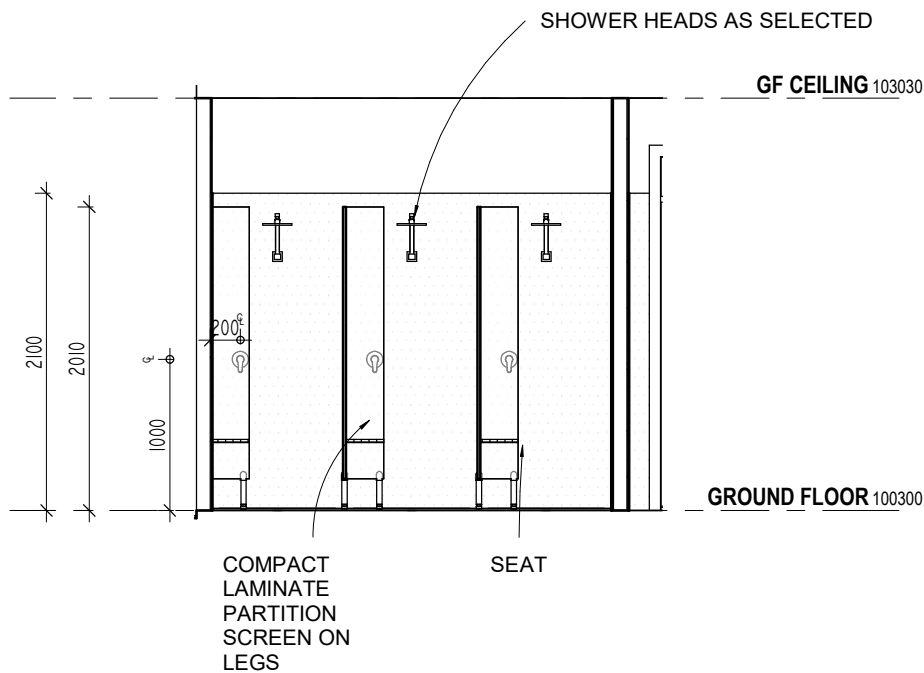
SCALE  
As indicated (A3)

DRAWING  
INTERNAL ELEVATION

ISSUE:  
DESIGN

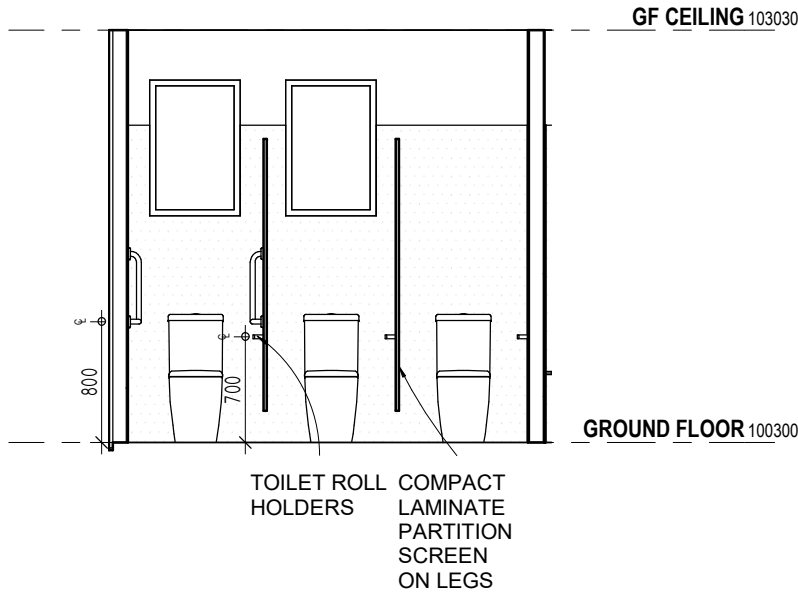
NO  
WD04

VIC REG  
DP-AD 59100



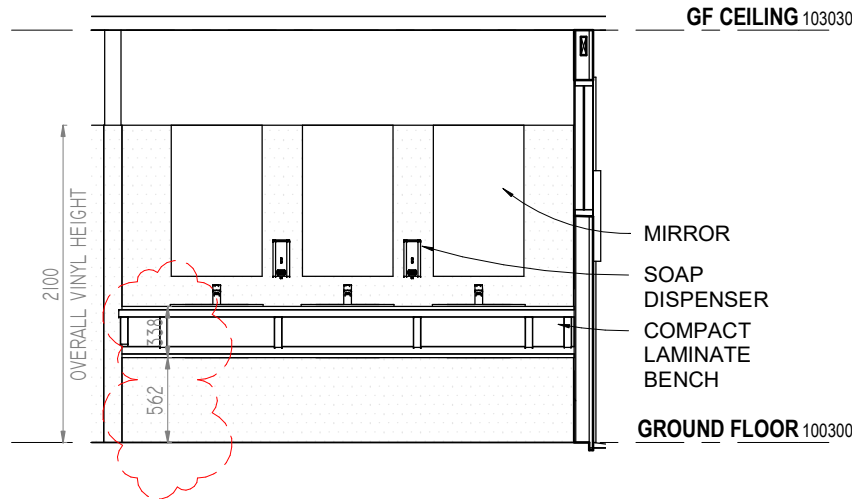
TYPICAL SHOWER SETUP

1 : 50



TYPICAL WC SETUP

1 : 50



TYPICAL BASIN SETUP

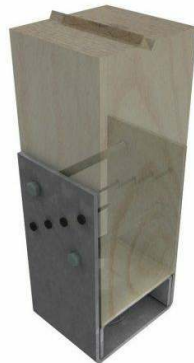
1 : 50



TYPICAL STEEL FASCIA  
WITH OVERFLOW SEPARATION BUMPS



TYPICAL SLOTTED GUTTER



TYPICAL POST ANCHOR  
PSB90G  
FIXED TO MANUFACTURERS  
SPECIFICATION

**DO NOT SCALE  
DRAWINGS**

BUILDER TO VERIFY ALL WORK  
INCLUDING DIMENSIONS AND  
LEVELS  
BEFORE BUILDING  
COMMENCES

This drawing and associated drawings in the drawing set ("the documents") are copyright © Alexstar Enterprises PTY LTD ("Alexstr Building Designs"). Do not copy or reproduce for any purpose without the prior written consent of Alexstar Building Designs. All rights are reserved. This building has been designed with standard loadings only, specific loads like waterbeds, solar panels and A/C systems are not included unless specifically noted. All colours and materials are indicative only until selections. All 3D images are indicative only for illustration purposes. Furniture and cabinetry are drawn for illustration purposes only. Selections will take precedence over anything shown for illustration.

REVISIONS

REV C  
13/10/21

KANIVA CARAVAN  
PARK  
ABLUTIONS BLOCK

KANIVA

PROJECT NUMBER  
18-21

DATE  
13/10/21

SCALE  
1 : 50 (A3)

DRAWING  
INTERNAL ELEVATION

ISSUE:  
DESIGN

NO  
WD05

VIC REG  
DP-AD 59100

GF CEILING 103030

GROUND FLOOR 100300

AMBULANT 1

1 : 50

GF CEILING 103030

GROUND FLOOR 100300

AMBULANT 2

1 : 50

GF CEILING 103030

GROUND FLOOR 100300

AMBULANT 3

1 : 50

GF CEILING 103030

GROUND FLOOR 100300

MALE 1

1 : 50

GF CEILING 103030

GROUND FLOOR 100300

MALE 2

1 : 50

GF CEILING 103030

GROUND FLOOR 100300

MALE 3

1 : 50

GF CEILING 103030

GROUND FLOOR 100300

MALE 4

1 : 50

## DO NOT SCALE DRAWINGS

BUILDER TO VERIFY ALL WORK  
INCLUDING DIMENSIONS AND  
LEVELS  
BEFORE BUILDING  
COMMENCES

This drawing and associated drawings in the drawing set ("the documents") are copyright © Alexstar Enterprises PTY LTD ("Alexstr Building Designs"). Do not copy or reproduce for any purpose without the prior written consent of Alexstar Building Designs. All rights are reserved. This building has been designed with standard loadings only, specific loads like waterbeds, solar panels and A/C systems are not included unless specifically noted. All colours and materials are indicative only until selections. All 3D images are indicative only for illustration purposes. Furniture and cabinetry are drawn for illustration purposes only. Selections will take precedence over anything shown for illustration.

### REVISIONS

REV C  
13/10/21

KANIVA CARAVAN  
PARK

ABLUTIONS BLOCK

KANIVA

PROJECT NUMBER  
18-21

DATE  
13/10/21

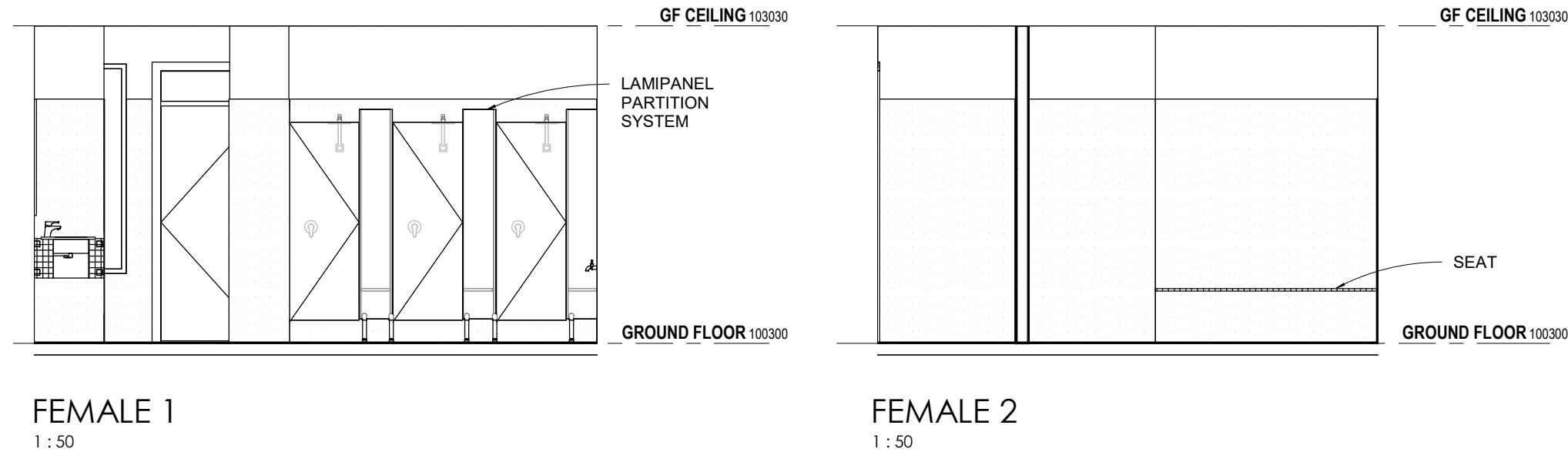
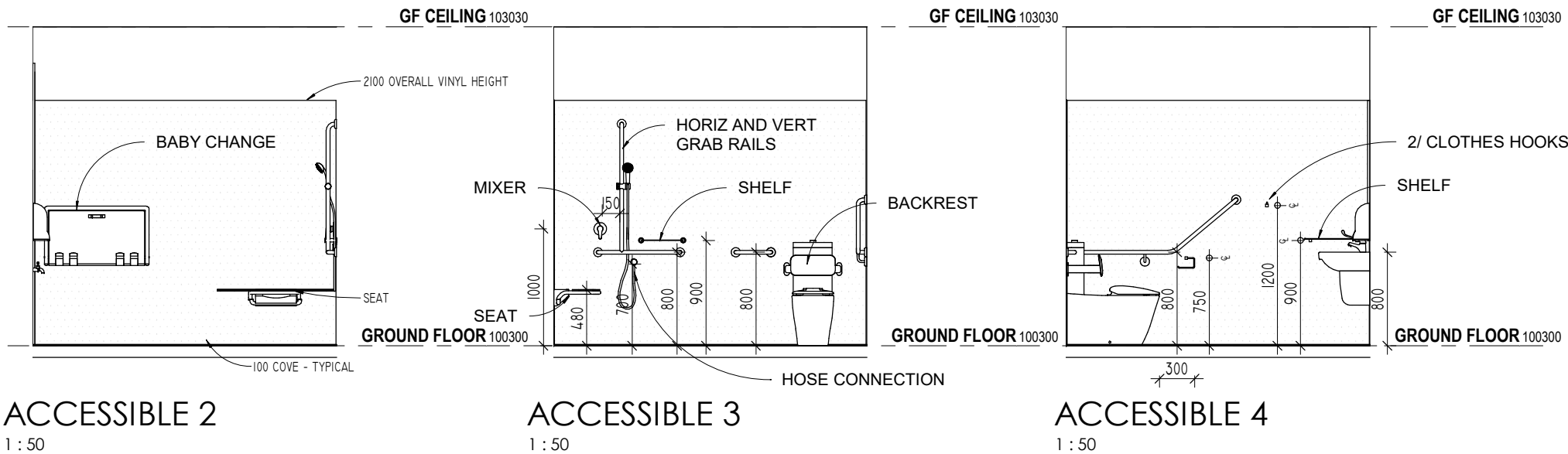
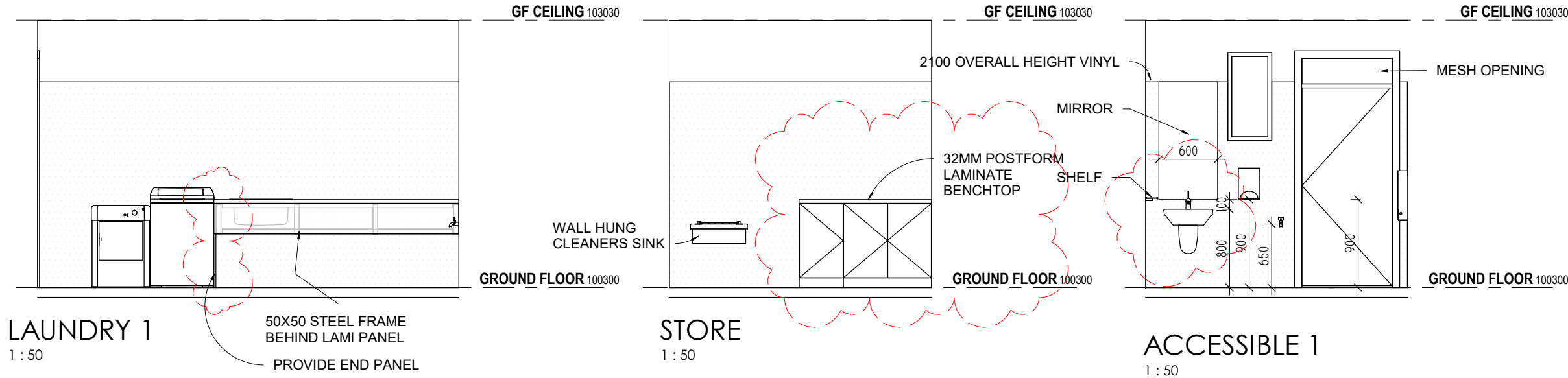
SCALE  
1 : 50 (A3)

DRAWING  
INTERNAL ELEVATION

ISSUE:  
DESIGN

NO  
WD06

VIC REG  
DP-AD 59100





**DO NOT SCALE  
DRAWINGS**

BUILDER TO VERIFY ALL WORK  
INCLUDING DIMENSIONS AND  
LEVELS  
BEFORE BUILDING  
COMMENCES

This drawing and associated drawings in the drawing set ("the documents") are copyright © Alexstar Enterprises PTY LTD ("Alexstr Building Designs"). Do not copy or reproduce for any purpose without the prior written consent of Alexstar Building Designs. All rights are reserved. This building has been designed with standard loadings only, specific loads like waterbeds, solar panels and A/C systems are not included unless specifically noted. All colours and materials are indicative only until selections. All 3D images are indicative only for illustration purposes. Furniture and cabinetry are drawn for illustration purposes only. Selections will take precedence over anything shown for illustration.

REVISIONS

REV C  
13/10/21

KANIVA CARAVAN  
PARK

ABLUTIONS BLOCK

KANIVA

PROJECT NUMBER  
18-21

DATE  
13/10/21

SCALE  
1 : 50 (A3)

DRAWING  
INTERNAL ELEVATION

ISSUE:  
DESIGN

NO  
WD07

VIC REG  
DP-AD 59100

GF CEILING 103030

VINYL WALLING TYPICAL  
2100 OVERALL HEIGHT  
(2M SHEET WITH 100MM  
COVE)

HAND  
DRIER

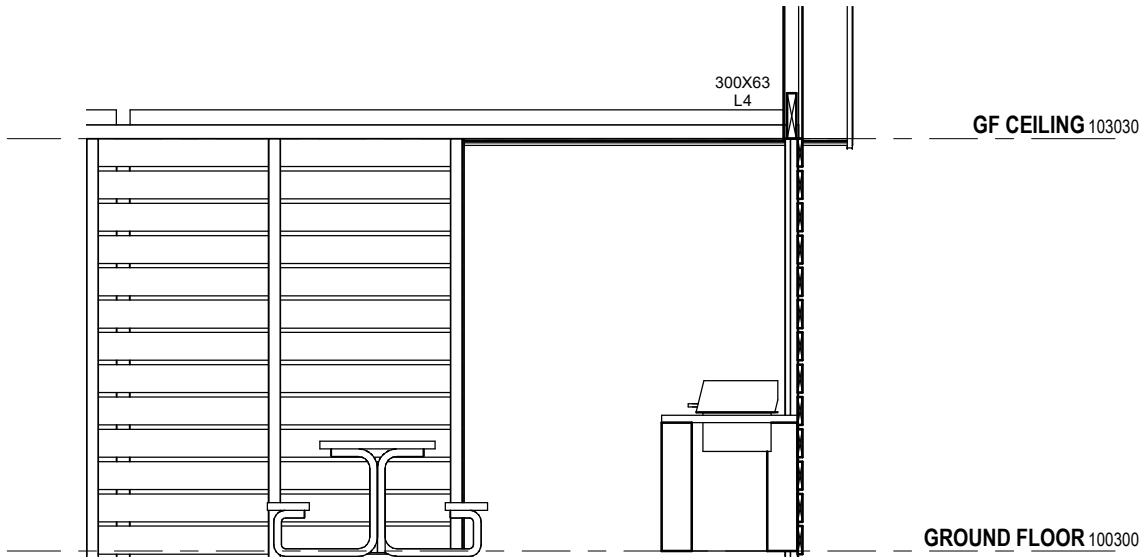
TAP

GROUND FLOOR 100300

SEAT - SEE TYPICAL DETAIL

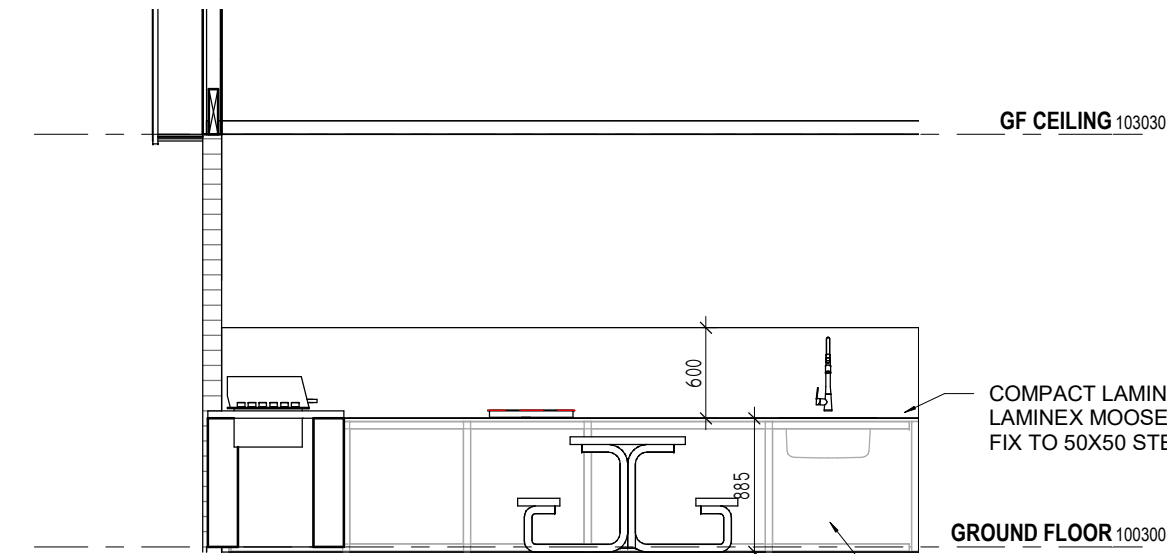
**FEMALE 3**

1 : 50



**BBQ 1**

1 : 50



**BBQ 3**

1 : 50

COMPACT LAMINATE SHARK NOSE EDGE  
LAMINEX MOOSE COLOUR  
FIX TO 50X50 STEEL FRAMING

GROUND FLOOR 100300

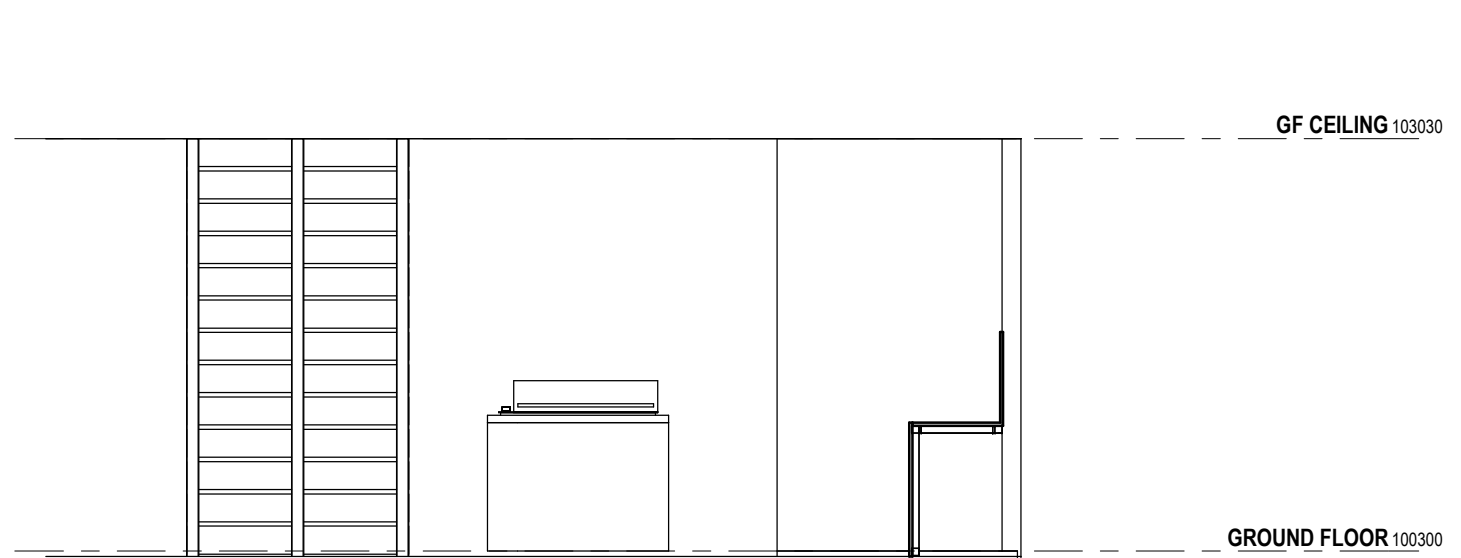
90X19 VERTICAL BATTENS -  
5MM SPACING FIXED TO  
STEEL FRAME WITH 2  
STAINLESS STEEL FIXINGS  
TOP AND BOTTOM

GF CEILING 103030

GROUND FLOOR 100300

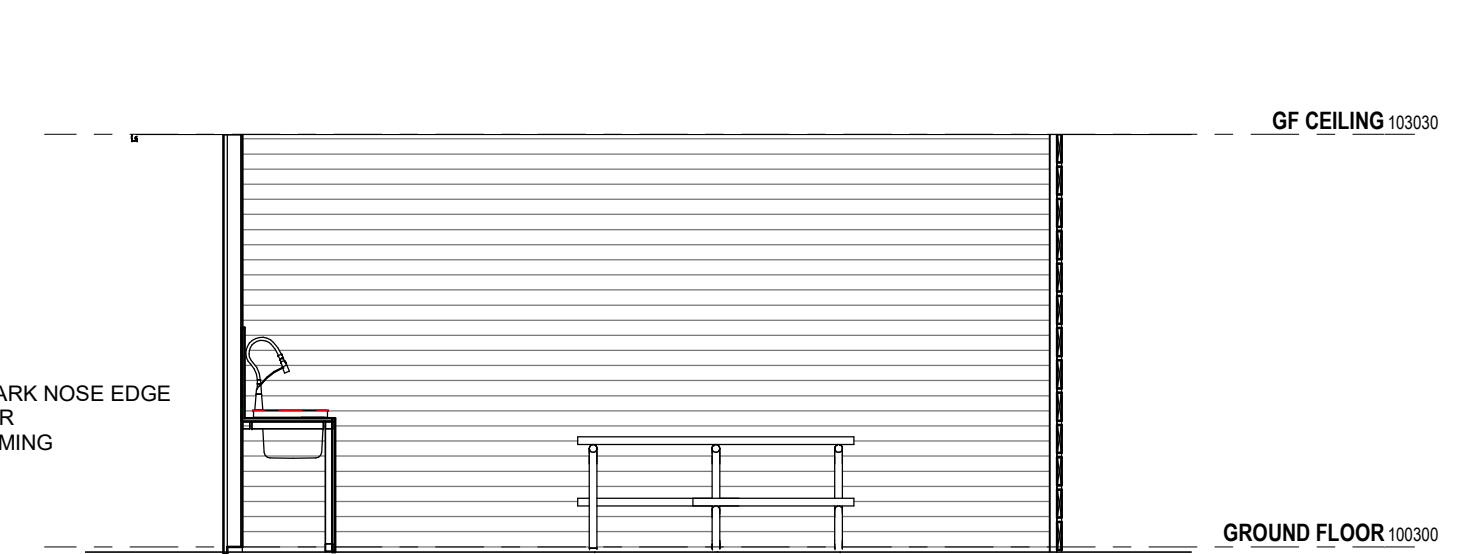
**FEMALE 4**

1 : 50



**BBQ 2**

1 : 50



**BBQ 4**

1 : 50

DO NOT SCALE  
DRAWINGS

BUILDER TO VERIFY ALL WORK  
INCLUDING DIMENSIONS AND  
LEVELS  
BEFORE BUILDING  
COMMENCES

This drawing and associated drawings in the drawing set ("the documents") are copyright © Alexstar Enterprises PTY LTD ("Alexstar Building Designs"). Do not copy or reproduce for any purpose without the prior written consent of Alexstar Building Designs. All rights are reserved. This building has been designed with standard loadings only, specific loads like waterbeds, solar panels and A/C systems are not included unless specifically noted. All colours and materials are indicative only until selections. All 3D images are indicative only for illustration purposes. Furniture and cabinetry are drawn for illustration purposes only. Selections will take precedence over anything shown for illustration.

## REVISIONS

REV C  
13/10/21

KANIVA CARAVAN  
PARK

ABLUTIONS BLOCK

KANIVA

PROJECT NUMBER  
18-21

DATE  
13/10/21

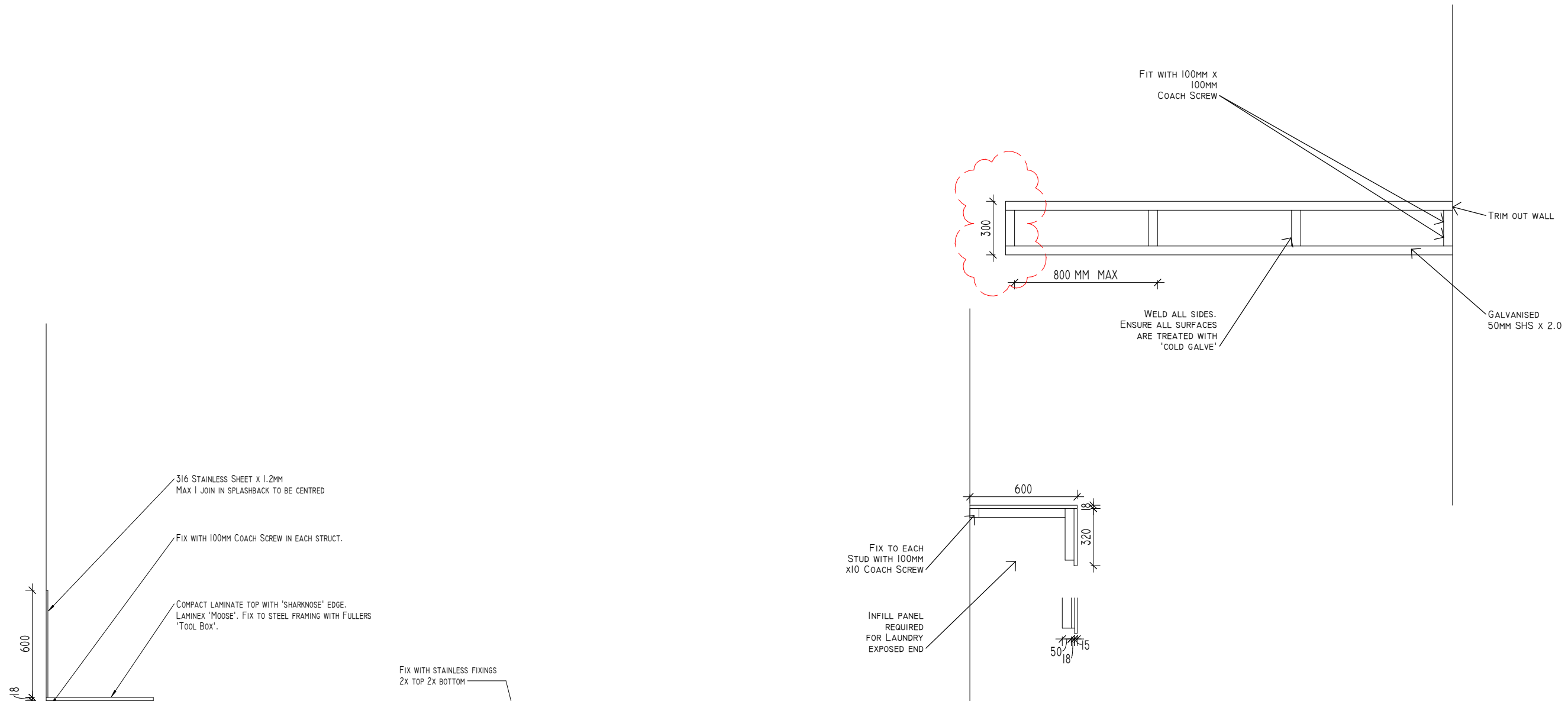
SCALE  
1 : 25 (A3)

DRAWING  
DETAILS

ISSUE:  
DESIGN

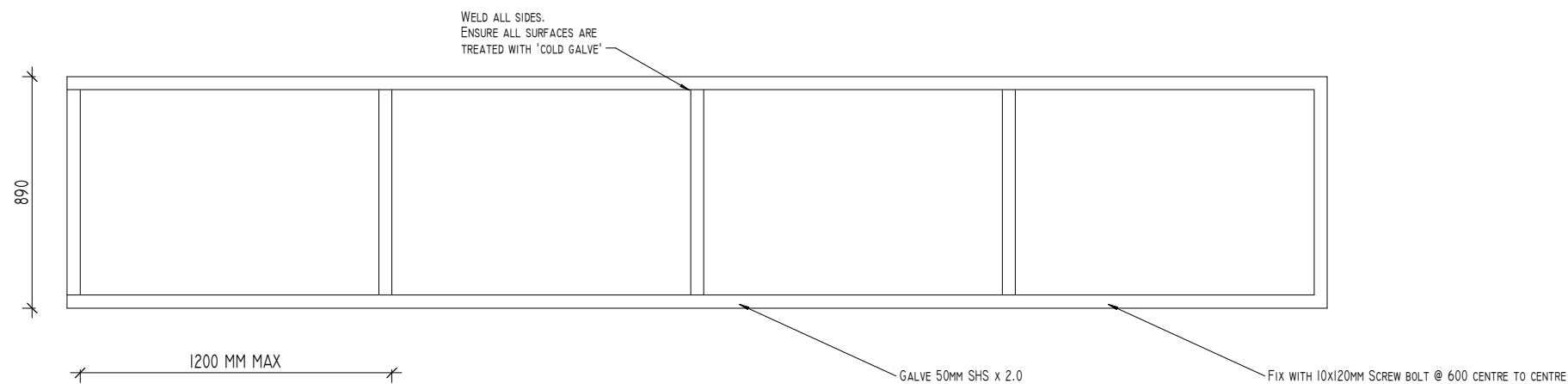
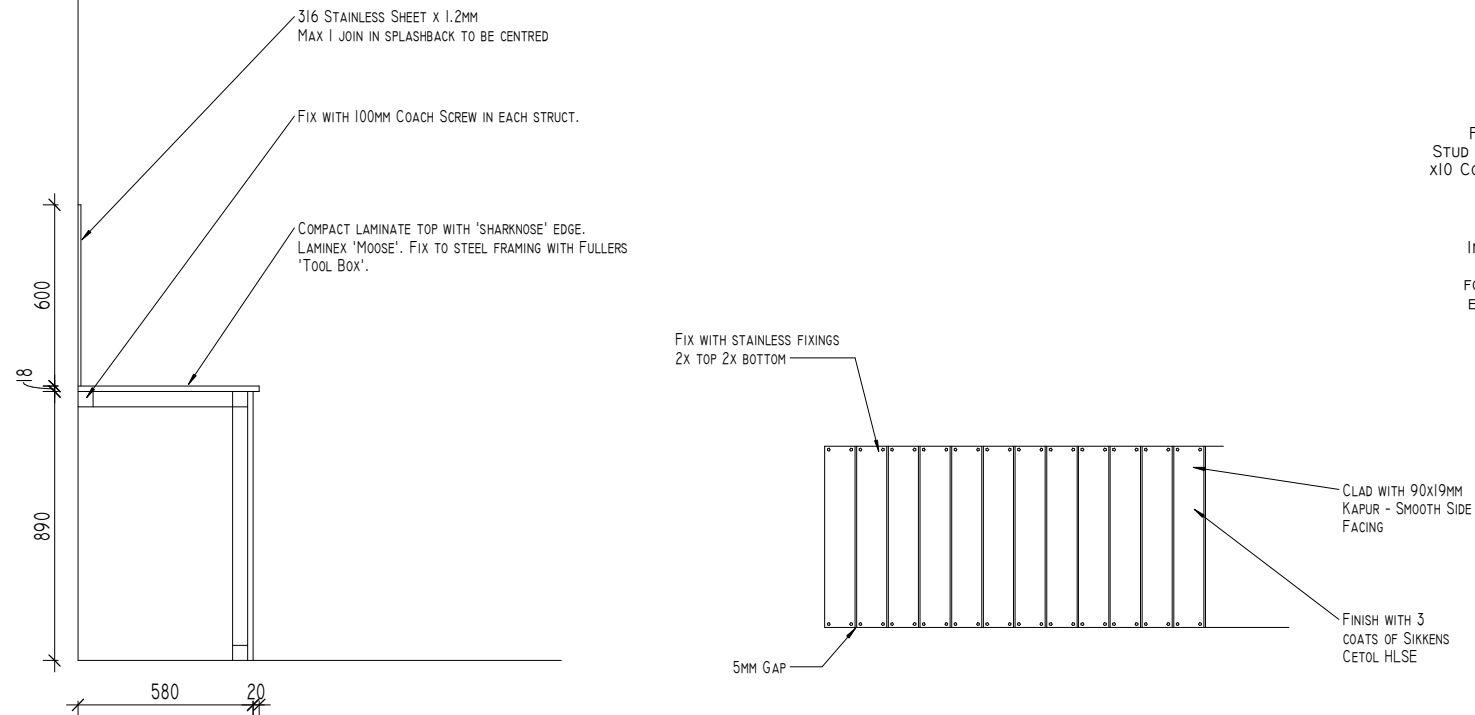
NO  
WD08

VIC REG  
DP-AD 59100



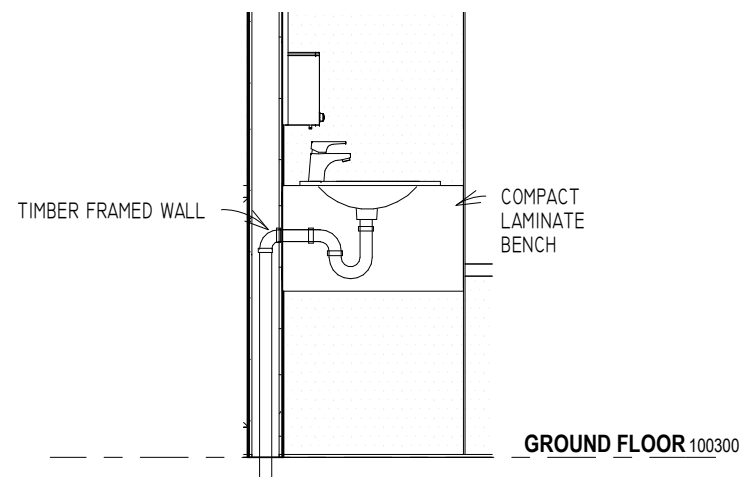
## LAUNDRY BENCH

1 : 25

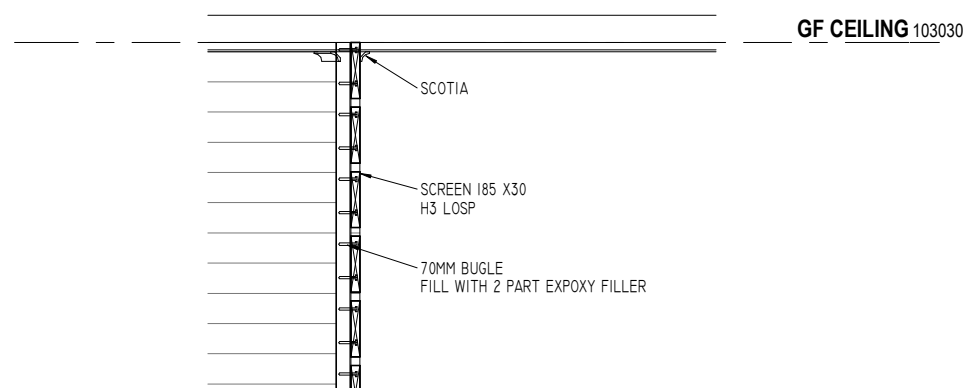


## CAMP KITCHEN BENCH

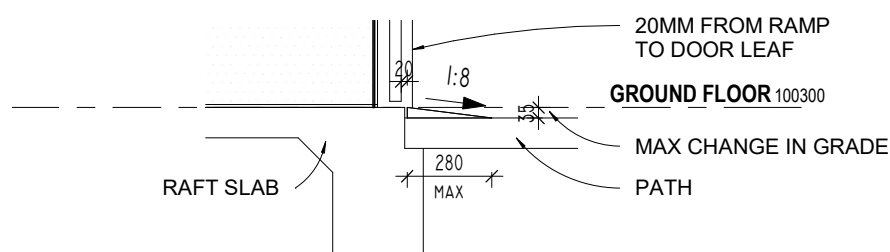
1 : 25



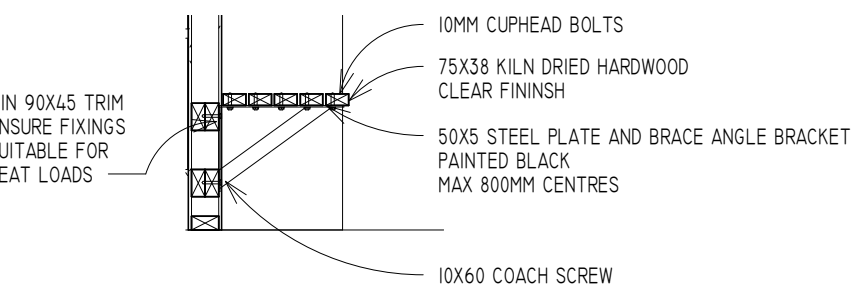
TYPICAL BASIN DRAIN SETUP  
1 : 25



TYPICAL SCREEN  
1 : 25

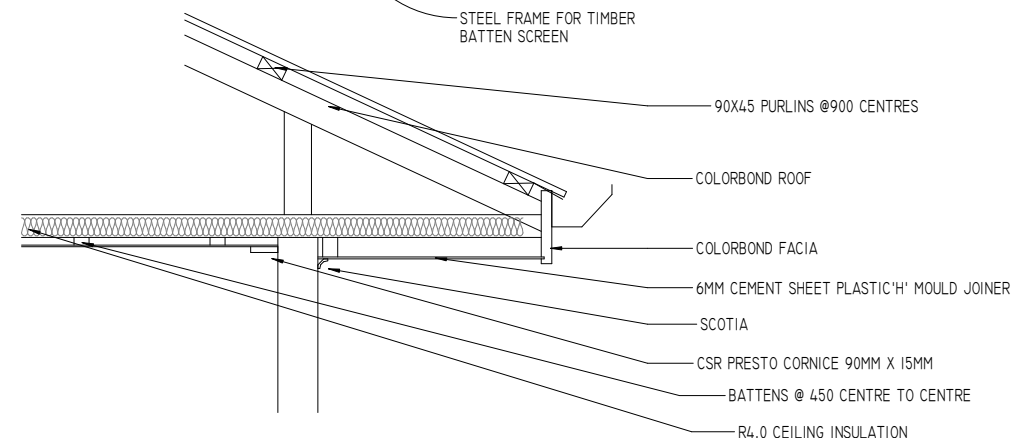
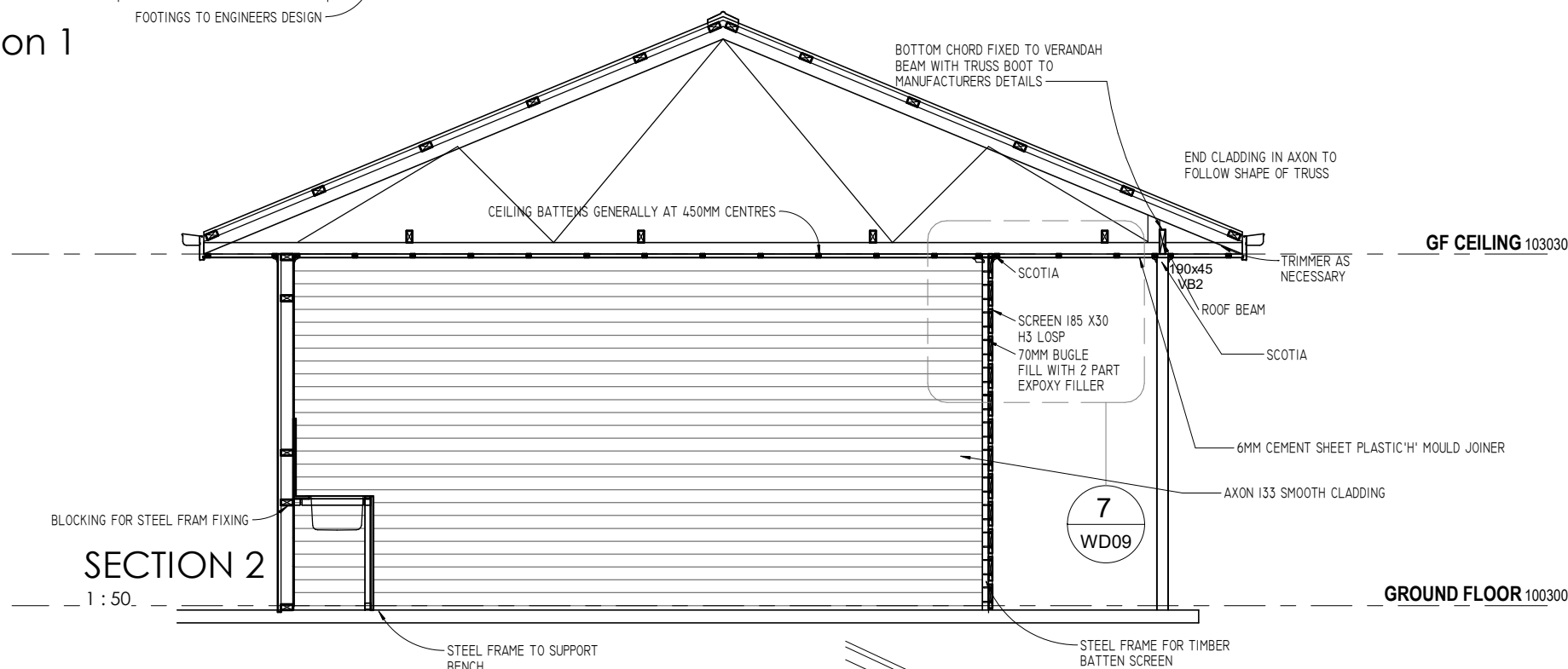
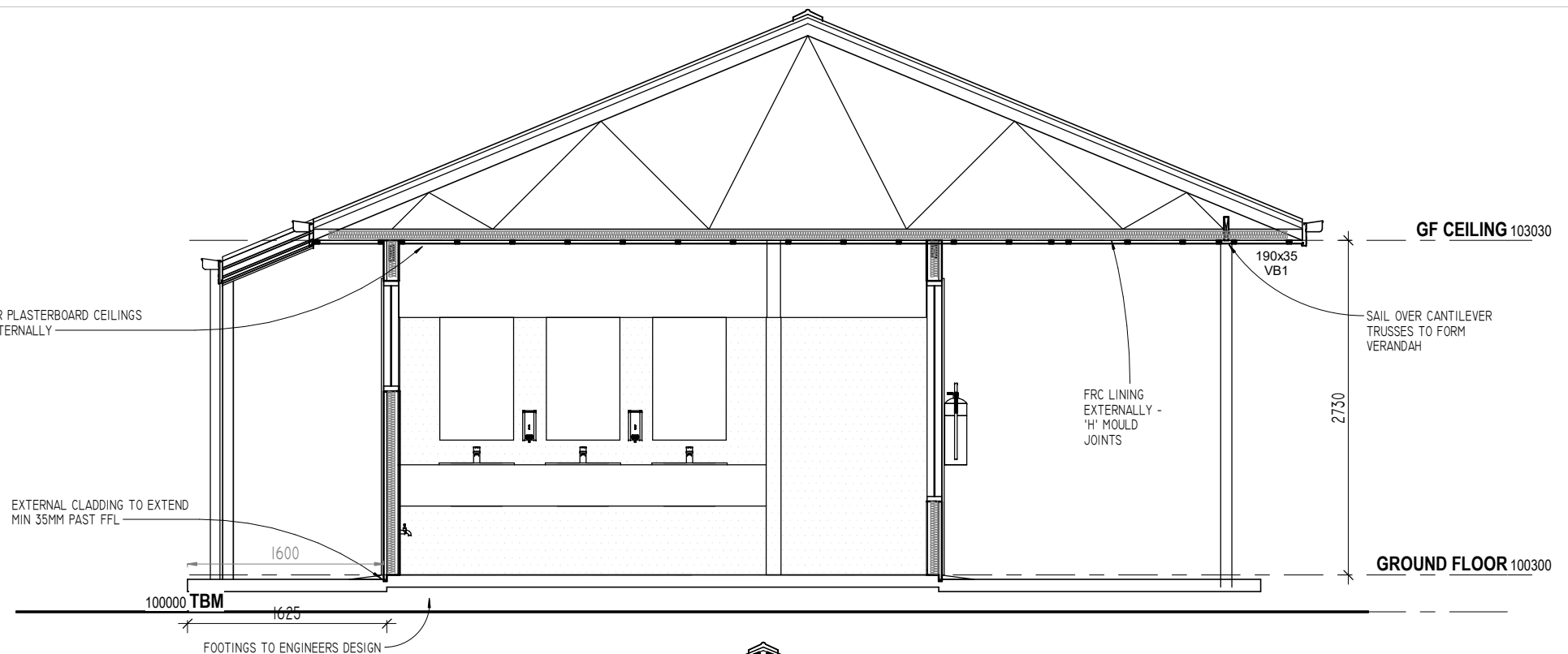


STEP RAMP SECTION  
1 : 25



TYPICAL BENCH SEAT  
1 : 25

Section 1  
1 : 50



## DO NOT SCALE DRAWINGS

BUILDER TO VERIFY ALL WORK  
INCLUDING DIMENSIONS AND  
LEVELS  
BEFORE BUILDING  
COMMENCES

This drawing and associated drawings in the drawing set ("the documents") are copyright © Alexstar Enterprises PTY LTD ("Alexstr Building Designs"). Do not copy or reproduce for any purpose without the prior written consent of Alexstar Building Designs. All rights are reserved. This building has been designed with standard loadings only, specific loads like waterbeds, solar panels and A/C systems are not included unless specifically noted. All colours and materials are indicative only until selections. All 3D images are indicative only for illustration purposes. Furniture and cabinetry are drawn for illustration purposes only. Selections will take precedence over anything shown for illustration.

### REVISIONS

REV C  
13/10/21

KANIVA CARAVAN  
PARK

ABLUTIONS BLOCK

KANIVA

PROJECT NUMBER  
18-21

DATE  
13/10/21

SCALE  
1 : 100 (A3)

DRAWING  
SUBFLOOR

ISSUE:  
DESIGN

NO  
WD10

VIC REG  
DP-AD 59100

35MM REBATE WITH FALL TO EXTERIOR

ALL CONDUITS AND PIPE TAILS TO BE CAPPED BENEATH  
GROUND UNTIL CONNECTED TO SERVICES  
PROVIDE MIN 90MM SLEEVE BENEATH SLAB FOR IN SLAB  
SERVICES SUCH AS HOT AND COLD WATER, ELECTRICAL  
CONDUITS  
SLEEVES TO BE PROVIDED WITH LARGE RADIUS BENDS  
FOR EASE OF INSERTION OF CONDUITS AND PIPES

PROVIDE EARTH BAR TO SLAB ADJACENT TO ELECTRICAL  
METER LOCATION FOR ELECTRICIAN TO CONNECT TO

SETDOWNS GENERALLY 50MM

SOIL CLASSIFICATION BY OTHERS

ALL FOOTING DETAILS TO ENGINEERS  
SPECIFICATION

TERMITE TREATMENT TO AS3660.1

PROVIDE 0.2MM HIGH IMPACT RESISTANT DPC  
BENEATH SLAB TO AS2870

PLUMBING SETOUT INDICATIVE  
PLUMBER TO CHECK SEPCIFIC SETOUT  
DISTANCES FOR FIXTURES AS SELECTED

## SUBFLOOR SERVICES

1 : 100

35MM REBATE WITH FALL TO EXTERIOR

ALL CONDUITS AND PIPE TAILS TO BE CAPPED BENEATH  
GROUND UNTIL CONNECTED TO SERVICES  
PROVIDE MIN 90MM SLEEVE BENEATH SLAB FOR IN SLAB  
SERVICES SUCH AS HOT AND COLD WATER, ELECTRICAL  
CONDUITS  
SLEEVES TO BE PROVIDED WITH LARGE RADIUS BENDS  
FOR EASE OF INSERTION OF CONDUITS AND PIPES

PROVIDE EARTH BAR TO SLAB ADJACENT TO ELECTRICAL  
METER LOCATION FOR ELECTRICIAN TO CONNECT TO

SETDOWNS GENERALLY 50MM

ALL FOOTING DETAILS TO ENGINEERS  
SPECIFICATION

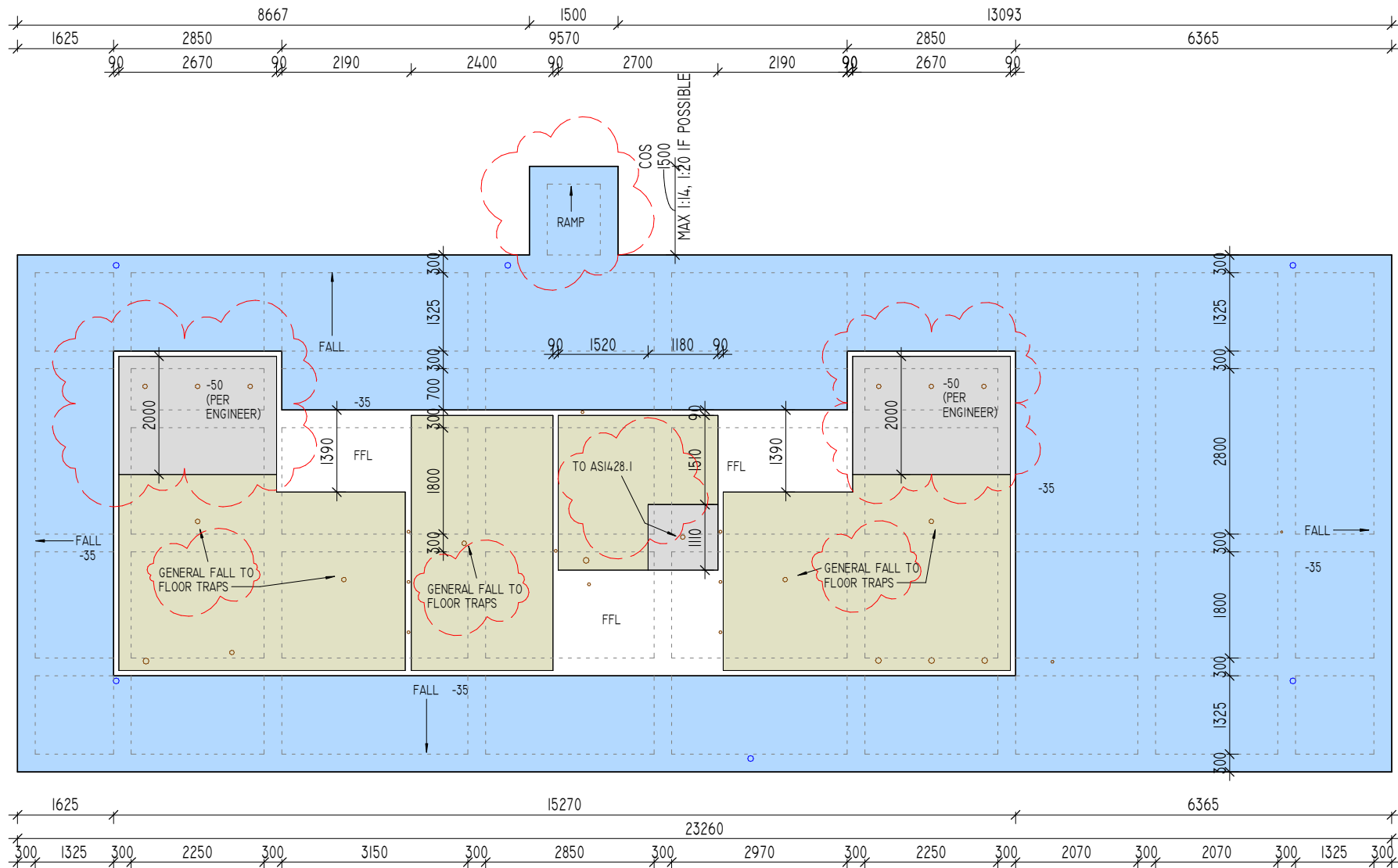
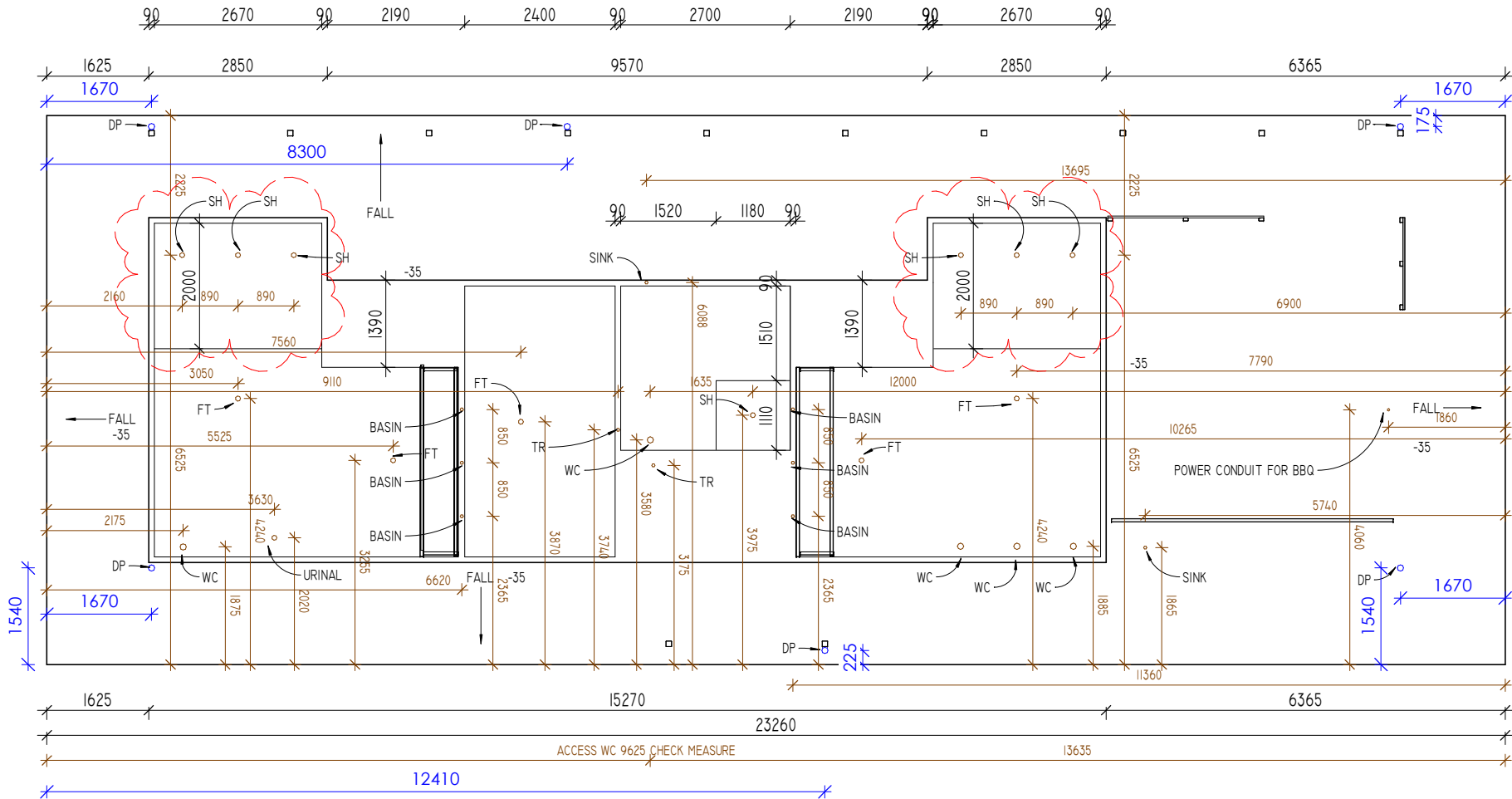
TERMITE TREATMENT TO AS3660.1

PROVIDE 0.2MM HIGH IMPACT RESISTANT DPC  
BENEATH SLAB TO AS2870

PLUMBING SETOUT INDICATIVE  
PLUMBER TO CHECK SEPCIFIC SETOUT  
DISTANCES FOR FIXTURES AS SELECTED

## SUBFLOOR FOOTINGS

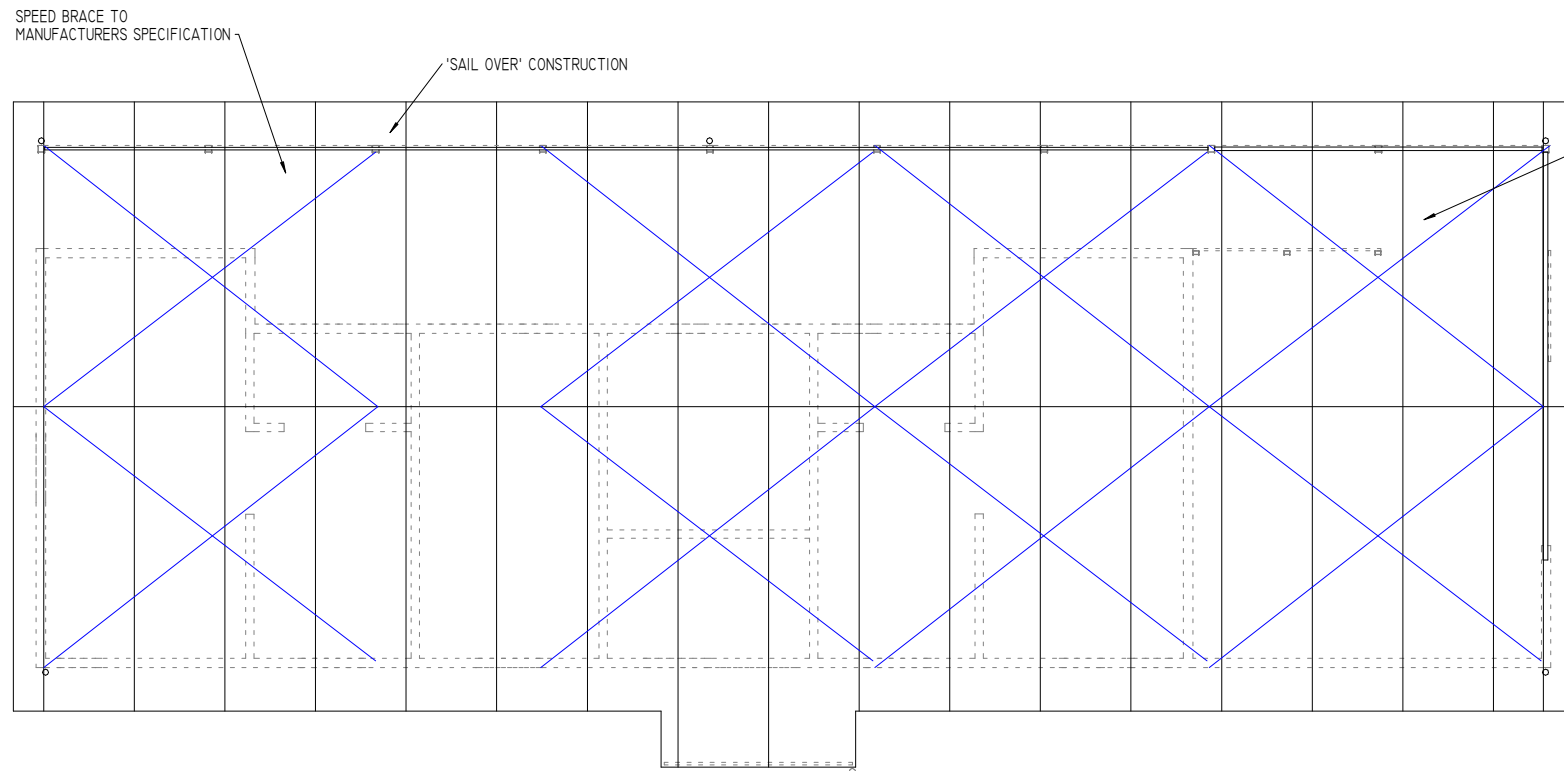
1 : 100





## ROOF FRAME

1 : 100



N2 DESIGN WIND SPEED

WIND DIRECTION 1  
65.3M2 X 0.72KPA = 47.0KN  
63.9KN PROVIDED

WIND DIRECTION 2  
16.7M2 X 0.92KPA = 15.4KN  
37.8KN PROVIDED

USE GENERALLY 3KN/M CROSSED STRAP BRACED WHERE NOTED 'B' USE 6KN/M BRACE BOARD WHERE NOTED 'C' USE 9KN/M BRACE BOARD WITH M12 RODS MIN 1800MM CENTRES WHERE NOTED 'E' USE 6KN/M BRACE BOARD PATTERN WITH M12 BOLT FROM TOP PLATE TO FOOTING AT EACH END OF THE BRACE

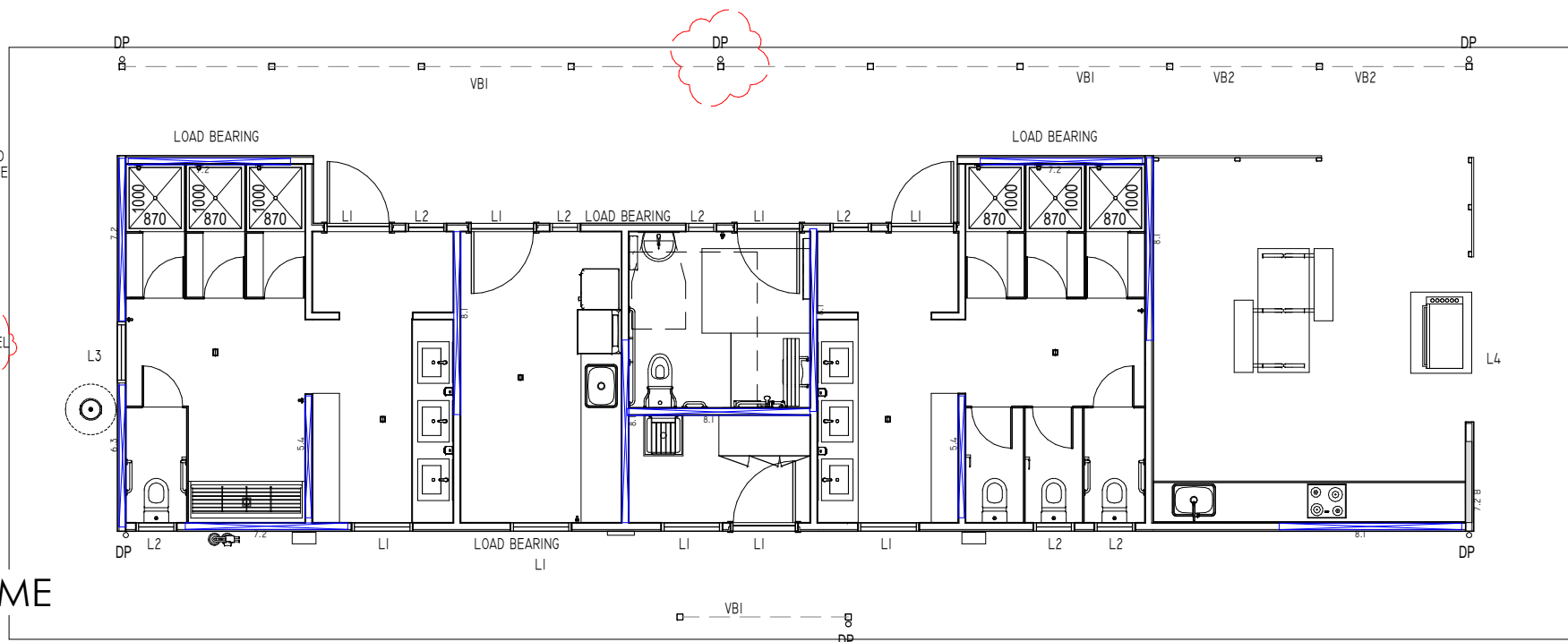
ALL TIMBER MGPI0 UNLESS OTHERWISE NOTED

EXTERNAL TIMBER H3 TREATED  
INTERNAL TIMBER H2 MINIMUM

VB1 = 190X35 - SET BASE AT CEILING LEVEL  
VB2 = 190X45 - SET BASE AT CEILING LEVEL  
L1 = 120X35 MGPI0  
L2 = 90X45 MGPI0  
L3 = 90X45  
L4 = 300X63 MEYSPAN I3  
JAMB STUDS GENERALLY 2/90X45  
90X45 STANDARD STUDS AT MAX 450MM CENTRES

## WALL FRAME

1 : 100



MANUFACTURERES DETAILS TO TAKE PRECEDENCE THIS LAYOUT PROVIDED TO DETERMINE APPROX LOAD POINTS IF LOAD POINTS VARY - MANUFACTURER TO PROVIDE APPROPRIATE SUPPORT DETAILS, OR CONTACT THIS OFFICE IMMEDIATELY FOR WALL FRAME AMENDMENT

ROOF TRUSSES TO MANUFACTURERS SPECIFICATION  
MAX 1200MM CENTRES  
PROVIDE 90X45 BC STABILISERS MAX 1800MM CENTRES  
PROVIDE 90X35 INTERMEDIATE CEILING JOISTS

90X45 PURLINS MAX 900MM CENTRES

N2 DESIGN WIND SPEED

PROVIDE 2/90 x 45 SUPPORT STUDS FOR POINT LOADS

TIE DOWNS

PURLIN TO TRUSS 1.4KN

USE 1/NO 14 TYPE 17 BATTEN SCREW

TRUSS TO TOP PLATE 4.4KN EACH END

USE 2 FRAMING ANCHORS PER CONNECTION

TOP AND BOTTOM PLATE TO STUD 3.7KN/M (4.4KN EVERY SECOND STUD)

USE GALV STRAP 4 NAILS EACH END AT

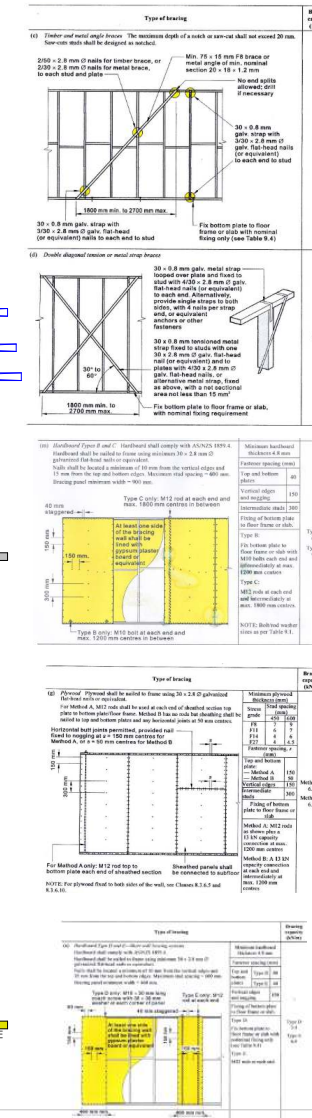
EVERY SECOND STUD - CORRESPOND WITH TRUSSES

BOTTOM PLATE TO FLOOR 2.1KN/M

PROVIDE MASONRY NAIL AT 1M CENTRES AND M10 SCREW BOLT AT ENDS OF BRACING UNITS, AND AT 1200MM CENTRES ALONG BRACING UNITS, AND AT MAXIMUM 4M CENTRES TO LOAD BEARING WALLS

LINTEL TIE DOWN 5.5KN EACH END USE 1 GALV STRAP WITH 4 NAILS EACH END TO BOTH ENDS OF LINTEL - SIMILAR CONNECTION AT BASE OF STUD M10 BOLT TO SLAB WITHIN 100MM OF JAMB STUD

VERANDAH POST CONNECTION 3.8KN UPLIFT - PROVIDE 2/M10 BOLTS TO BEAMS AND TO POST SHOE



## DO NOT SCALE DRAWINGS

BUILDER TO VERIFY ALL WORK  
INCLUDING DIMENSIONS AND  
LEVELS  
BEFORE BUILDING  
COMMENCES

This drawing and associated drawings in the drawing set ("the documents") are copyright © Alexstar Enterprises PTY LTD ("Alexstar Building Designs"). Do not copy or reproduce for any purpose without the prior written consent of Alexstar Building Designs. All rights are reserved. This building has been designed with standard loadings only, specific loads like waterbeds, solar panels and A/C systems are not included unless specifically noted. All colours and materials are indicative only until selections. All 3D images are indicative only for illustration purposes. Furniture and cabinetry are drawn for illustration purposes only. Selections will take precedence over anything shown for illustration.

### REVISIONS

REV C  
13/10/21

KANIVA CARAVAN  
PARK

ABLUTIONS BLOCK

KANIVA

PROJECT NUMBER  
18-21

DATE  
13/10/21

SCALE  
As indicated (A3)

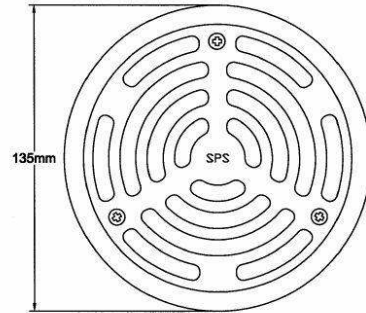
DRAWING  
WET AREAS

ISSUE:  
DESIGN

NO  
WD12

VIC REG  
DP-AD 59100

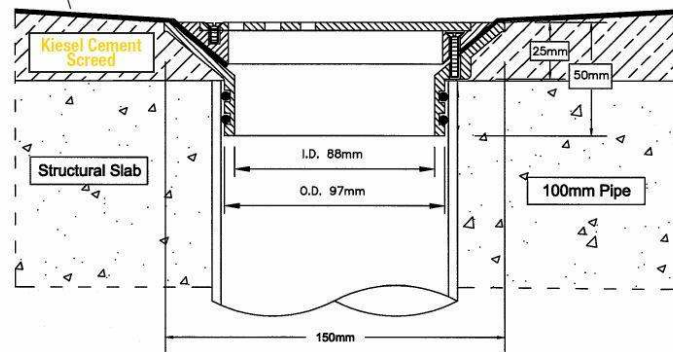
Specification codes:  
V100CPA (Bronze body, chrome-plated ring & grate)  
V100SBA (Brass body, polished 304 SS ring & grate)  
V100SSA (Assembly in polished 316 stainless steel)



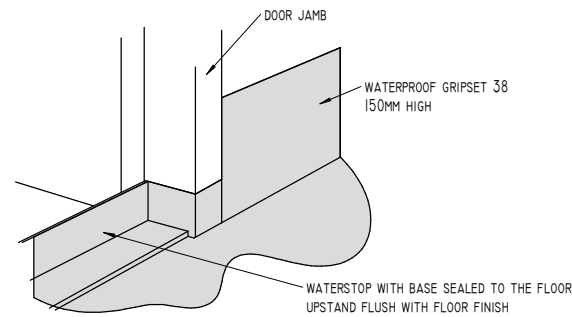
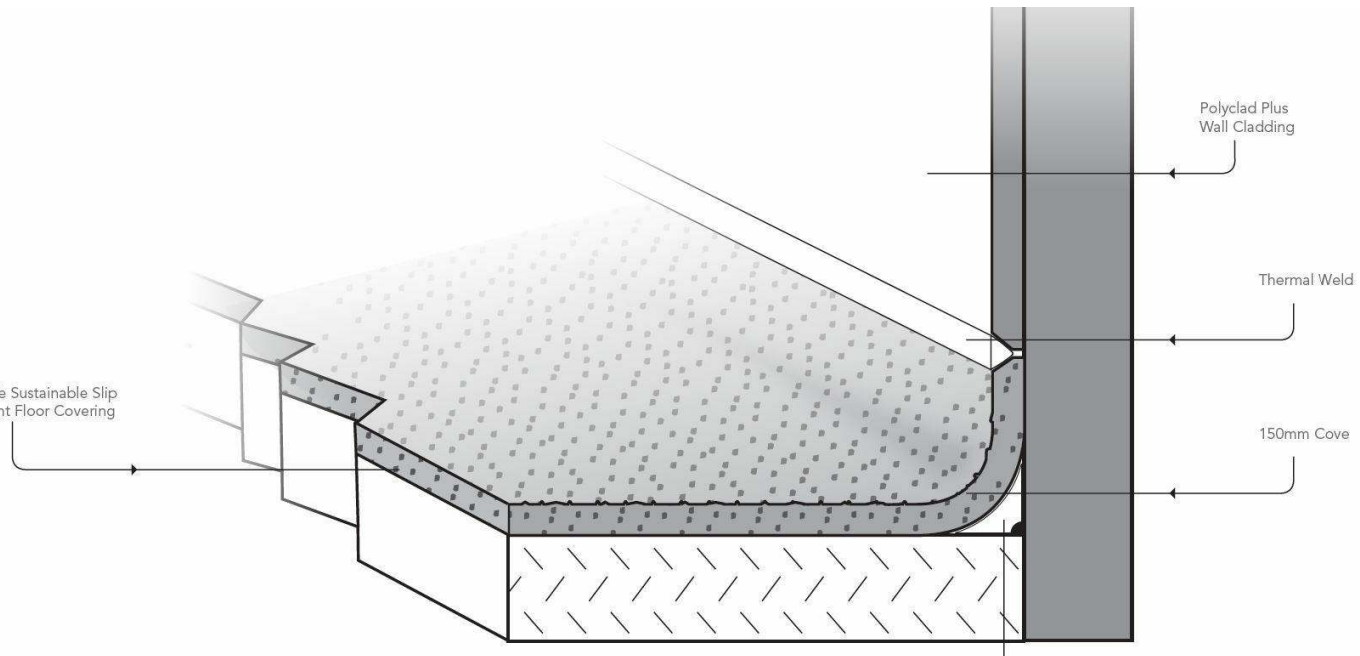
- Push-in floor waste assembly for sheet vinyl flooring.
- Vinyl floor drain body available in brass, bronze or 316 stainless steel.
- Ring & grate available in chrome-plated bronze or polished 304 and 316 stainless steel.
- O-rings adapt spigot to 100mm PVC, copper, HDPE and CI pipe.

Polysafe Sustainable Slip Floorcovering

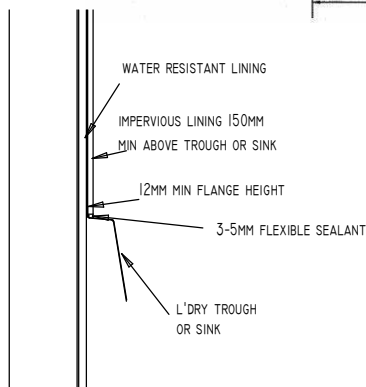
Typical Application



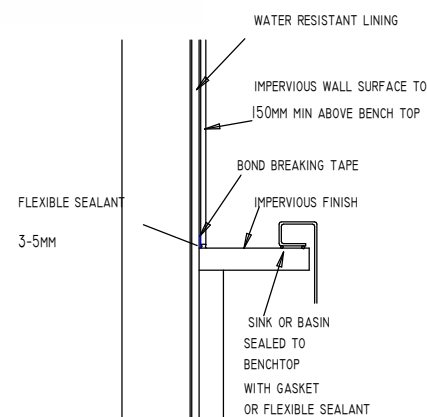
Polysafe Sustainable Slip Resistant Floor Covering



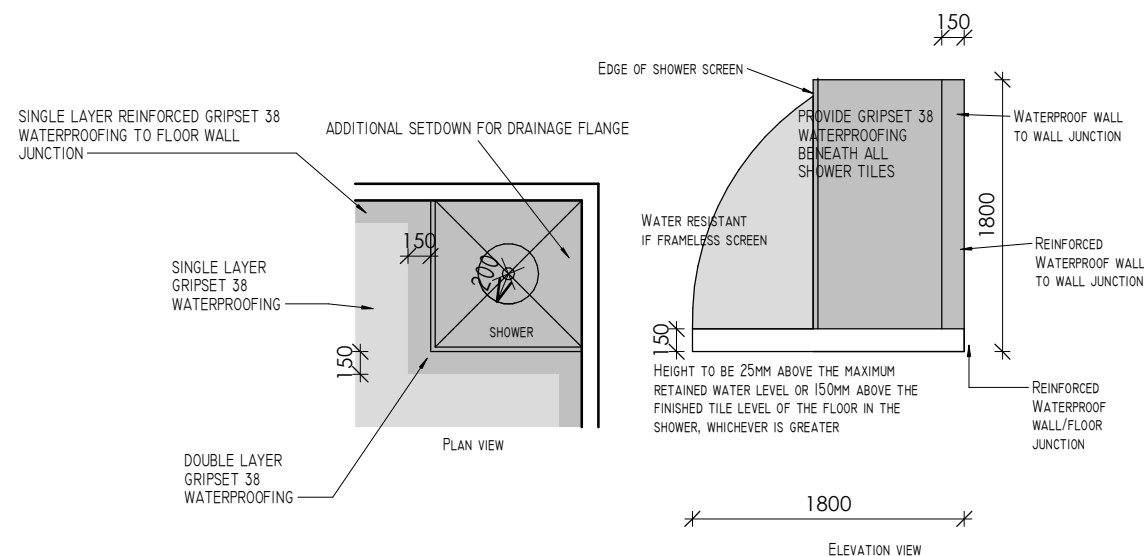
### WATERSTOP AT DOOR JUNCTION



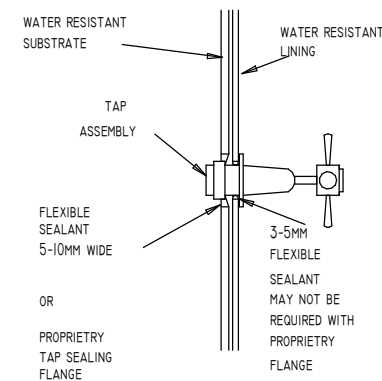
### WALL RECESSED SINK OR BASIN



### INSET SINK OR BASIN

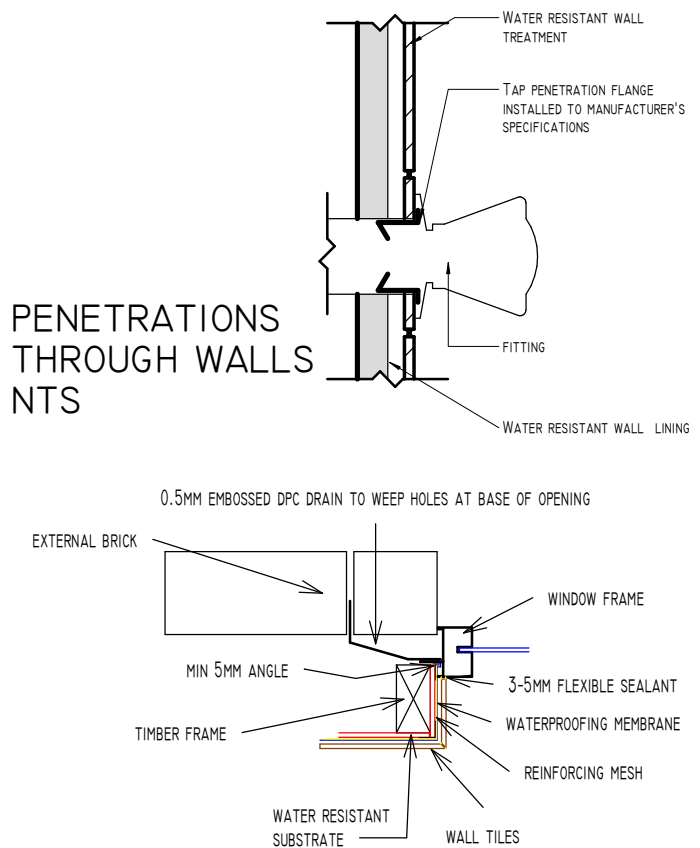


### ENCLOSED SHOWER AREAS NTS



### TAP PENETRATION THROUGH WALL

### PENETRATIONS THROUGH WALLS NTS



### WET AREA WINDOW

ALL HINGED DOORS TO AN ENCLOSED W/C TO BE PROVIDED WITH ESCAPE HINGES, OR SHALL SWING OUT OF THE ENCLOSURE

ANY AIR LOCKED BATHROOM OR W/C SHALL BE PROVIDED WITH A MECHANICAL EXHAUST SYSTEM THAT COMES ON WITH THE LIGHT, WITH AIR BEING DUCTED TO A FULLY VENTILATED ROOF SPACE, OR DIRECTLY TO OUTSIDE. FOR 'OBJECTIONABLE' AIR THE EXHAUST MUST REMAIN ON FOR SUFFICIENT TIME TO PROVIDE AIR CHANGES IN ACCORDANCE WITH ASI668.2

ALL GLAZING TO BE IN ACCORDANCE WITH ASI288  
MANUFACTURED WINDOWS AND DOORS TO BE IN ACCORDANCE WITH AS 2047  
UNFRAMED GLASS DOORS MIN 10MM TOUGHENED SAFETY GLASS - FRAMED GLASS DOORS (MAX 2M2) 4MM GRADE A TOUGHENED SAFETY GLASS  
SIDELIGHTS TO BE 4MM GRADE A TOUGHENED SAFETY GLASS  
FULL HEIGHT GLAZED PANELS THAT COULD POSSIBLY BE MISTAKEN FOR A DOOR GRADE A SAFETY GLASS 4MM - 2M2, 5MM - 3M2, 6MM - 4M2  
ALL GLAZING IN BATHROOM TO BE GRADE A SAFETY GLASS. MINIMUM THICKNESS FOR SHOWER DOOR 6MM

PROVIDE FRAMING TO ASI684.2  
CEILING JOISTS GENERALLY 90X45 MGPI0 AT 600MM CENTRES (INTERMEDIATE TO TRUSSES)  
PROVIDE 90X45 MGPI0 PURLINS  
PROVIDE 90X45 MGPI0 TOP PLATES (TRENCHED)  
PROVIDE 90X45 BOTTOM PLATES (TRENCHED)  
PROVIDE 90X35 WALL STUDS GENERALLY  
PROVIDE 90X45 WALL STUDS FOR WALLS OVER 2700MM.  
STUD SPACING GENERALLY 600MM AND 450MM TO WET AREAS  
PROVIDE 90X35 NOGGING AT MAX 1350MM CENTRES  
PROVIDE 90X45 BC STABILISERS/HANGERS AT MAX 1800MM CENTRES  
FOR WINDOWS OVER 3M IN WIDTH USE 2/90X35 SILL TRIMMERS

CLADDING

SHEET ROOFING TO BE FIXED IN ACCORDANCE WITH MANUFACTURERS SPECIFICATION

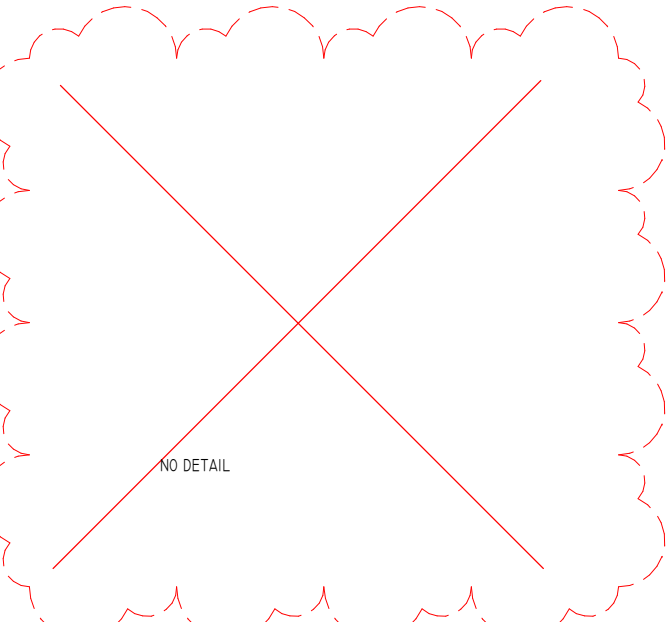
PROVIDE 90MM DIA DOWNPIPES

EXTERNAL LININGS AND CLADDINGS TO BE FIXED TO MANUFACTURERS SPECIFICATION - ENSURE BREATHABLE MOISTURE BARRIERS ARE INSTALLED BEHIND CLADDINGS

ALL TIMBER FRAMING TO BE IN ACCORDANCE WITH ASI684.2 2010 DETAILS TO BE PROVIDED BY TRUSS MANUFACTURER AND TIMBER SUPPLIER OR ENGINEER AS APPROPRIATE

STRUCTURAL STEEL MEMBERS TO BE IN ACCORDANCE WITH ENGINEERS DETAILS.

STRUCTURAL STEEL INTERNALLY IN A PERMANENTLY DRY LOCATION REQUIRES NO 'PROTECTIVE COATING', ALL OTHER AREAS PROVIDE HOT DIP GALVANISED STEEL TO 300G/M2



VENTILATION OPENING SIZES MM2						
ROOM AREA M2	ROOF PITCH GREATER THAN 22	MIN AREA TO BE WITHIN 900MM OF RIDGE	AREA THAT COULD BE IN EAVES OR BELOW 900MM FROM RIDGE	ROOF PITCH LESS THAN 22	MIN AREA TO BE WITHIN 900MM OF RIDGE	AREA THAT COULD BE IN EAVES OR BELOW 900MM FROM RIDGE
4	13400 - 130 DIA	4000 - 71MM DIA	9400 - 96MMX96MM	26700 - 184MM DIA	8000 - 101MM DIA	18700 - 136MMX136MM
8	26700 - 184 DIA	8000 - 100MM DIA	18700 - 136MMX136MM	53400 - 260MM DIA	16000 - 142MM DIA	37400 - 193MMX193MM
12	40000 - 225 DIA	12000 - 123MM DIA	28000 - 167MMX167MM	80000 - 319MM DIA	24000 - 174MM DIA	56000 - 237MMX237MM
16	54000 - 260 DIA	16000 - 142MM DIA	37400 - 193MMX193MM	106700 - 369MM DIA	32000 - 202MM DIA	74700 - 273MMX273MM
20	66700 - 291 DIA	20000 - 159MM DIA	46700 - 216MMX216MM	133400 - 412MM DIA	40000 - 225MM DIA	93400 - 305MMX305MM
24	80000 - 319 DIA	24000 - 175MM DIA	56000 - 236MMX236MM	160000 - 451MM DIA	48000 - 247MM DIA	112000 - 335MMX335MM

CORROSION RESISTANCE

MORE THAN 1KM FROM BREAKING SURF OR MORE THAN 100M FROM NON-BREAKING SURF	INTERNAL	NO PROTECTION NECESSARY
	EXTERNAL	2 COATS OF ALKYD PRIMER OR GLOSS OR HOT DIP GALV 300G/M2 OR HOT DIP GALV 100G/M2 PLUS 1 COAT VINYL PRIMER OR GLOSS
WITHIN 1KM OF BREAKING SURF OR LESS THAN 100M FROM NON-BREAKING SURF	INTERNAL	2 COATS OF ALKYD PRIMER OR GLOSS
	EXTERNAL	INORGANIC ZINC PRIMER PLUS 2 COATS VINYL GLOSS OR HOT DIP GALV 300G/M2 OR HOT DIP GALV 100G/M2 PLUS 2 COATS VINYL PRIMER OR GLOSS

ENERGY EFFICIENCY

ZONE 6

CLASS 10 BUILDINGS NEED NOT COMPLY

INTERNAL LIGHTING MAX 5W/M2

EXTERNAL LIGHTING MAX 4W/M2

WINDOWS TO BE IN ACCORDANCE WITH AS 2047 AND ASI288 WITH A MINIMUM 1000/150 RATING

PROVIDE SHUTTERS TO EXHAUST FANS

ROOF INSULATION  
ALL INSULATION SHALL BE IN ACCORDANCE WITH AS/NZS4859.1 AND SHALL BE INSTALLED SO THAT IT FORMS A CONTINUOUS BARRIER AND ABUTS OR OVERLAPS ADJOINING INSULATION OR SUPPORTS  
WHERE SISILATION IS USED AS A VAPOUR BARRIER IT MUST ALSO BE SUITABLY BREATHABLE TO MINIMISE MOULD FORMATION

WHERE DOWN LIGHTS ARE PROPOSED ENSURE ALL DOWNLIGHTS ARE FITTED WITH HEAT SHIELD COVERS

CEILING R4.0

EXTERNAL WALLS R2.5 FOR CLAD FRAME

GUTTERS AND OVERFLOWS

EAVES GUTTERS DESIGNED FOR 1 IN 20 YEAR RAINFALL EVENT MUST HAVE OVERFLOW DEVICES INSTALLED TO ENSURE 1 IN 100 YEAR EVENT DOES NOT BACKFLOW INTO THE BUILDING (NCC P2.2.1 (A))

WHERE EAVES GUTTERS ARE DESIGNED TO COPE WITH A 1 IN 100 YEAR EVENT NO ADDITIONAL OVERFLOW DEVICES ARE NECESSARY (NCC P2.2.1(B),(c))

FROM NCC TABLE 3.5.2.2 THE X-SECTIONAL AREA (ASSUMED AS CAPACITY FROM THE SUPPLIER TABLES RATHER THAN X-SECTIONAL AREA)

FOR 50M2 ROOF PER DOWNPIPE IS 6300MM2  
FOR 60M2 ROOF PER DOWNPIPE IS 7900MM2

EXTERNAL WALL CLADDING MUST EXTEND MIN 50MM ABOVE EAVE LINE  
EXTERNAL WALLS MUST HAVE SISILATION FROM TOP PLATE TO BOTTOM OF WALL DRAINING INTO DPC. TOP SHEETS MUST OVERLAP LOWER SHEETS SUCH THAT ANY MOISTURE FLOWS PAST THE JOIN

EAVES GUTTERS ARE TO BE DESIGNED AS FOLLOWS:

STRATCO GUTTERS
STANDARD '125 QUAD' CAPACITY 6697MM2 PROVIDE DOWNPIPES TO SERVICE MAXIMUM 50M2 ROOF 75MM DOWNPIPES
'EDGE' GUTTER CAPACITY 14856MM2 PROVIDE DOWNPIPES TO SERVICE MAXIMUM 60M2 ROOF 100X50 OR 90 DIA DOWNPIPES TO BE USED AS CAPACITY IS SIGNIFICANTLY GREATER THIS GUTTER MAY BE USED TO DESIGN DIRECTLY FROM AS3500 FOR LARGER ROOF AREAS
'OG' GUTTER CAPACITY 4432MM2 MUST BE DESIGNED WITH OVERFLOW DEVICES OR TO AS3500 PROVIDE DOWNPIPES TO SERVICE MAXIMUM 32M2 ROOF. 75MM DOWNPIPES
'HALF ROUND' GUTTER CAPACITY 7703MM2 PROVIDE DOWNPIPES TO SERVICE MAXIMUM 50M2 GUTTER 75MM DOWNPIPES
'QUARTER ROUND' GUTTER CAPACITY 6292MM2 PROVIDE DOWNPIPES TO SERVICE MAXIMUM 50M2 ROOF 75MM DOPNPIPES
'HIGH SQUARE' GUTTERS CAPACITY 6759MM2 PROVIDE ONLY AS BOUNDARY GUTTER TO SERVICE MAXIMUM 50M2 ROOF 75MM DOWNPIPES

STANDARD DETAILS  
ONLY RELEVANT IF INCLUDED IN CONTRACT

DO NOT SCALE  
DRAWINGS

BUILDER TO VERIFY ALL WORK  
INCLUDING DIMENSIONS AND  
LEVELS  
BEFORE BUILDING  
COMMENCES

This drawing and associated drawings in the drawing set ("the documents") are copyright © Alexstar Enterprises PTY LTD ("Alexstr Building Designs"). Do not copy or reproduce for any purpose without the prior written consent of Alexstar Building Designs. All rights are reserved. This building has been designed with standard loadings only, specific loads like waterbeds, solar panels and A/C systems are not included unless specifically noted. All colours and materials are indicative only until selections. All 3D images are indicative only for illustration purposes. Furniture and cabinetry are drawn for illustration purposes only. Selections will take precedence over anything shown for illustration.

REVISIONS

REV C  
13/10/21

KANIVA CARAVAN  
PARK

ABLUTIONS BLOCK

KANIVA

PROJECT NUMBER  
18-21

DATE  
13/10/21

SCALE  
As indicated (A3)

DRAWING  
NOTES

ISSUE:  
DESIGN

NO  
WD13

VIC REG  
DP-AD 59100

DO NOT SCALE

DRAWINGS

BUILDER TO VERIFY ALL WORK

INCLUDING DIMENSIONS AND

LEVELS

BEFORE BUILDING

COMMENCES

This drawing and associated

drawings in the drawing set ("the

documents") are copyright ©

Alexstar Enterprises PTY LTD

("Alexstr Building Designs"). Do

not copy or reproduce for any

purpose without the prior written

consent of Alexstar Building

Designs. All rights are reserved.

This building has been designed

with standard loadings only.

specific loads like waterbeds,

solar panels and A/C systems are

not included unless specifically

noted. All colours and materials

are indicative only until

selections. All 3D images are

indicative only for illustration

purposes. Furniture and cabinetry

are drawn for illustration purposes

only. Selections will take

precedence over anything

shown for illustration.

REVISIONS

REV C

13/10/21

KANIVA CARAVAN

PARK

ABLUTIONS BLOCK

KANIVA

PROJECT NUMBER

18-21

DATE

13/10/21

SCALE

(A3)

DRAWING

STRUCTURE

ISSUE:

DESIGN

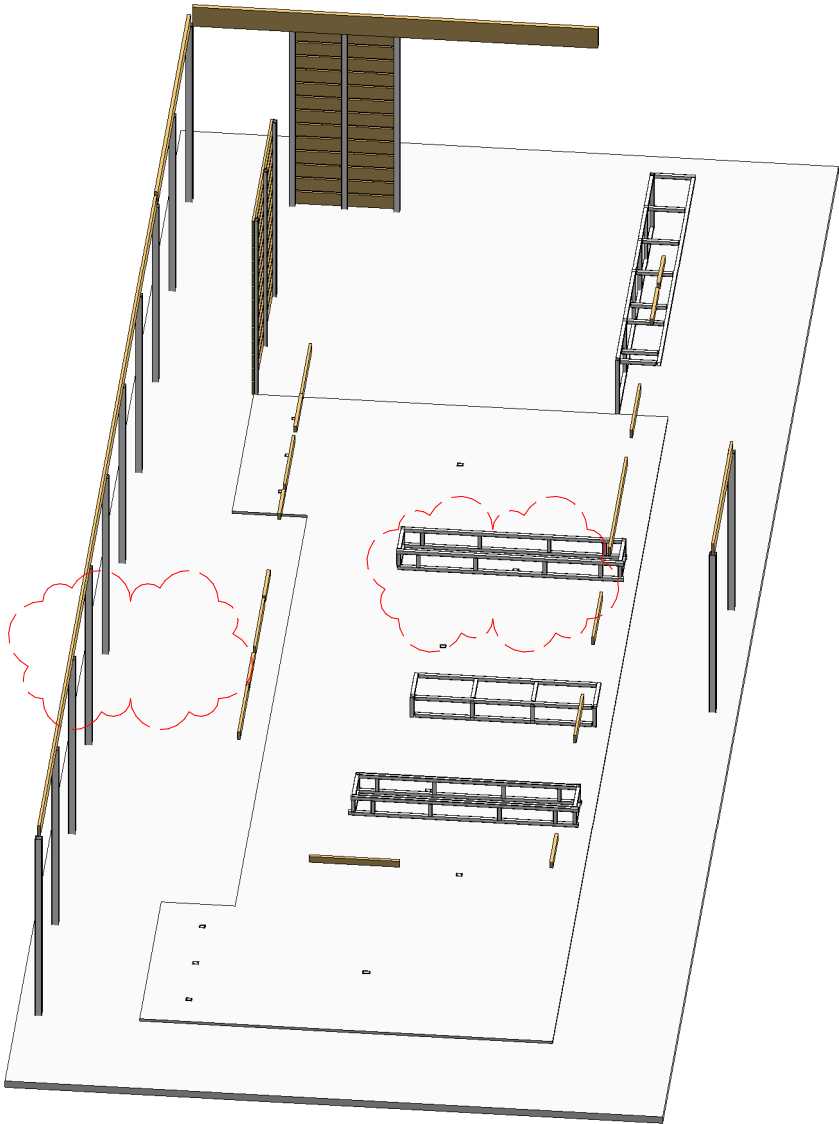
NO

WD14

VIC REG

DP-AD 59100

STRUCTURE





TO ASSIST PEOPLE WITH VISION IMPAIRMENTS, OR WHO ARE BLIND COLOUR LUMINANCE CONTRAST IS IMPORTANT

THE IMAGE TOP RIGHT SHOWS HOW COLOURS CAN APPEAR DIFFERENT, HOWEVER THEIR LUMINANCE CONTRAST, WHICH IS HIGHLIGHTED IN THE BLACK AND WHITE VERSION OF THE PICTURE SHOWS THAT THEY ALL APPEAR THE SAME IN LUMINANCE QUALITIES, EXCEPT THE YELLOW.

WHERE WINDOWS COULD BE CONFUSED FOR DOORS OR OPENINGS, THEN A SOLID CONTRASTING BAND SHOULD BE INSTALLED 900-1000MM ABOVE GROUND AND 75MM IN WIDTH

IDEALLY 2.4M WIDE, WITH A CLEAR SPACE OF 2.4M TO ONE SIDE, OVERHEAD CLEARANCE TO AT LEAST 2.5M. THERE SHOULD BE A CONTINUOUS PATH OF TRAVEL FROM THE CARPARK TO THE MAIN BUILDING ENTRANCE, THAT IS FREE OF STEPS. WHERE STEPS OR RAMPS ARE NECESSARY, A HAND RAIL SHOULD BE PACED ON AT LEAST ONE SIDE AND BE IN ACCORDANCE WITH THE PATHS OF TRAVEL DETAILS BELOW

IDEALLY A CLEAR AND UNOBSTRUCTED SPACE OF 1500X1500MM SHOULD BE PROVIDED IN EACH ROOM, OR AT THE END OF ANY PASSAGE, ALL OPENINGS SHOULD HAVE A MINIMUM 850MM CLEAR WIDTH, UNOBSTRUCTED BY THE DOOR OR DOOR FURNITURE (HANDLES ETC). ALL SURFACES SHOULD BE HARD OR SHORT PILE, CHANGES IN SURFACE HEIGHT SHOULD BE LESS THAN 3MM, OR 5MM IF ROUNDED

IDEALLY 1600MM X 2350 MIN CIRCULATION SPACE, WITH NO HOB. 35MM DIA GRAB RAILS 800MM ABOVE GROUND. VERTICAL HAND HELD SHOWER RAIL AND VERTICAL GRAB RAIL, AND A SLIP RESISTANT SEAT 470MM ABOVE GROUND, LEVER HANDLE TAPS OR MIXERS

ALL LEVER HANDLE 'D' SHAPED LATCHES WITH 50MM CLEARANCE BETWEEN DOOR AND HANDLE, SLIDING DOOR HANDLES TO BE A MINIMUM 60MM FROM THE DOOR JAMB. ALL HANDLES SHOULD BE BETWEEN 900 AND 1100MM ABOVE GROUND LEVEL

FOR THE DEAF OR HEARING IMPAIRED, PROVIDE FLASHING LIGHT ASSOCIATED WITH SMOKE ALARM TO ALLERT IF THE ALARM IS SOUNDING, AND SIMILAR LIGHTING SYSTEMS TO ALERT TO DOORBELLS ETC.

ALL PATHS SHOULD BE WELL LIT AND FREE FROM OVERHANGING LANDSCAPING OR OTHER OBSTRUCTIONS. WHERE THERE ARE RAMPS AND STEPS, TACTILE INDICATORS SHOULD BE PROVIDED, AND NON-SLIP LUMINANCE CONTRASTING NOSINGS TO STEPS AND THE SIDES OF RAMPS. THERE SHOULD BE A MINIMUM 1000MM WIDE FLAT LANDING AT THE TOP AND BOTTOM OF ANY RAMP OR STAIR

PROVIDE AN EMERGENCY ASSISTANCE BUTTON WITHIN THE TOILET FACILITY.  
CIRCULATION SPACE OF 1900X2300MM SHOULD BE PROVIDED. CLEAR SPACE OF 1500MM IN FRONT OF THE PAN, AND 1250MM TO THE SIDE OF THE PAN TO BE PROVIDED

TOILETS SHOULD BE LOAD RATED TO AT LEAST 150KG. THEY SHOULD PROVIDE LUMINANCE CONTRAST (SEE PICTURE OF TOILET WITH CONTRASTING SEAT AND FLUSH BUTTON) SEAT HEIGHT 470MM, PAN 800MM FROM REAR WALL, CENTRE LINE OF PAN 450MM FROM SIDE WALL, BACKREST SHOULD WITHSTAND 1100N OF FORCE.

SHOULD BE 800MM TO 840MM ABOVE FLOOR LEVEL WITH CLEAR SPACE BENEATH FOR KNEE ACCESS. ALL TAPS TO BE LEVER HANDLED. 800MM WIDE X 1500MM LONG CIRCULATION SPACE TO THE BASIN. PROVIDE A CLOTHES HANGING HOOK OR RAIL, A SHELF AND A MIRROR THAT IS A MINIMUM 350MM WIDE, STARTS 900MM ABOVE FLOOR LEVEL AND FINISHES 1850 ABOVE FLOOR LEVEL

POWER POINTS SHOULD BE LOCATED AT LEAST 600MM ABOVE FLOOR LEVEL, AND LIGHT SWITCHES BETWEEN 900MM AND 1100MM ABOVE FLOOR LEVEL. IDEALLY LARGE ROCKER STYLE SWITCHES SHOULD BE USED



REV C  
13/10/21

KANIVA

ISSUE:  
DESIGN

NO  
WD15

BUILDER TO VERIFY ALL WORK  
INCLUDING DIMENSIONS AND  
LEVELS  
BEFORE BUILDING COMMENCES

ACCESS RAMPS, STAIRWAYS AND HAND RAILS

ALL RAMPS AND STAIRWAYS SHALL HAVE A MINIMUM 1000MM CLEAR PATH OF TRAVEL

LANDINGS SHALL BE FLAT AND HAVE A MINIMUM 1200MM LENGTH AND BE THE FULL WIDTH OF THE PATH OF TRAVEL

HAND RAILS SHALL BE PROVIDED ON BOTH SIDES OF THE RAMP OR STAIRS

HAND RAILS SHALL CONTINUE 300MM PAST THE UPPER AND LOWER ENDS OF THE STAIRWAY OR RAMP

TACTILE GROUND INDICATORS SHALL BE LOCATED 1 TREAD DISTANCE FROM THE TOP AND BOTTOM OF STAIRWAYS, AND SHALL BE LOCATED 300MM FROM THE TOP AND BOTTOM OF RAMPS

TACTILE INDICATORS SHALL BE THE FULL WIDTH OF THE PATH OF TRAVEL AND BE 600MM-800MM LONG

RAMPS SHALL BE PROVIDED WITH A CURB AT EACH SIDE. THE CURB SHALL NOT PROTRUDE INTO THE PATH FURTHER THAN THE HAND RAIL

CURBS ARE TO EXTEND TO 150MM ABOVE THE RAMP SURFACE AND MAY HAVE A MAXIMUM 75MM GAP BENEATH THE CURB IF ATTACHED TO THE HAND RAIL UPRIGHTS



SIGNAGE

ALL ACCESSIBLE FACILITIES SHALL BE PROVIDED WITH APPROPRIATE SIGNAGE INCORPORATING THE INTERNATIONAL SYMBOLS FOR ACCESS, HEARING AND BRAILLE AS APPROPRIATE TO THE LOCATION

