



Kaniva Streetscape - Precedent Images

West Wimmera Shire Council



THOMSON HAY
LANDSCAPE ARCHITECTS

130 Howards Road, WATTLE FLAT VIC 3352
T 03 5334 5321
E office@thomsonhay.com
W www.thomsonhay.com

Project:
Kaniva Streetscape

Prepared for:
Wimmera Mallee Tourism &
West Wimmera Shire Council

Precedents

Date: 26.04.2021

Tree Species



Eucalyptus sideroxylon / Red Ironbark
Centre median tree



Jacaranda mimosifolia / Jacaranda
Parklet tree



Ulmus parvifolia / Chinese Elm
Large feature tree



Callistemon 'King's Park Special' / Bottlebrush
Small tree under powerlines

Understorey Planting



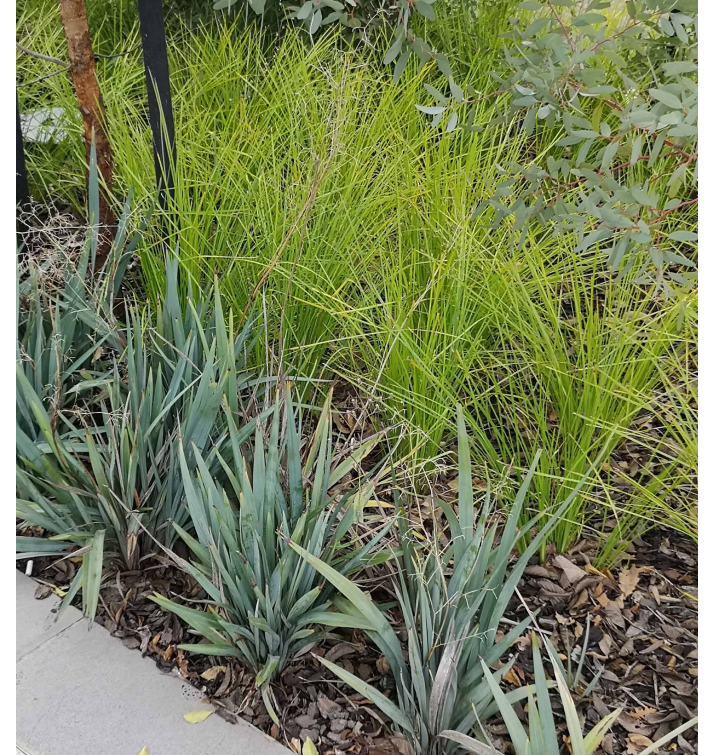
Rhagodia - central median mass planting



Roses - reduced extent - feature areas of median - crossings / intersection etc.



Mass planting grasses & ground covers at parklets etc.



Structures



Laser cut arbour / shelter with climbing vine



Ornamental grapevines on shopfront verandahs



Green wall - mesh frame with climbing vine



Parklet area with street furniture



Streetscape Features



Flock of Sheep sculptures to match existing



Electric vehicle charging station

WSUD



Tree cell diagram



Tree pit in parking bay

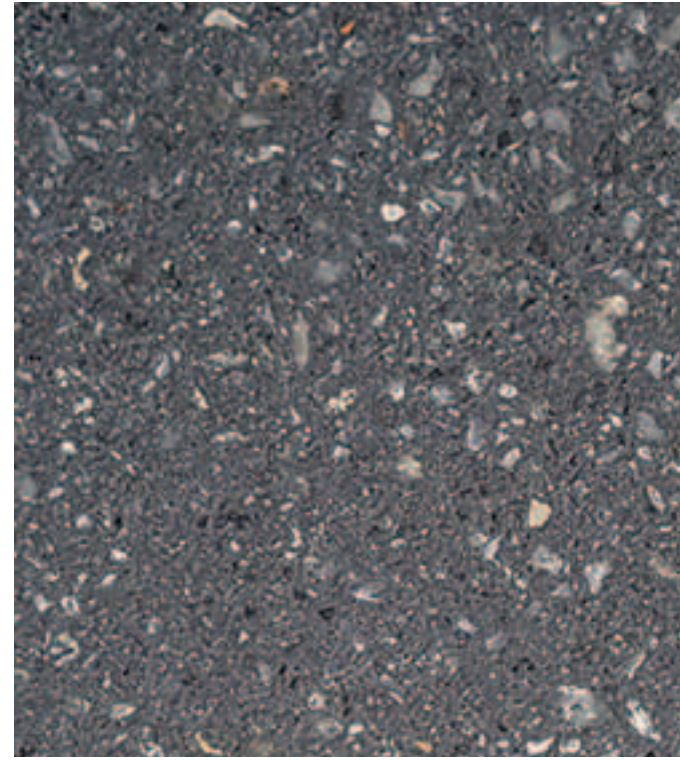
Surfaces / Paving



Existing red brick paving - remove yellow brick edges to modernise



Proposed paving artwork eg. engraved steel plate



Feature pavement option - G2 Paver 'Char' by SVC



Feature pavement option - lightly honed exposed aggregate concrete - off-white with brick aggregate

Lighting



Existing heritage light poles



Uplighting to centre median trees



Uplighting to windmill

Street Furniture



Existing bench seats to be relocated and refurbished including repainting and replacing timber slats



Proposed Pod seating and leaning circular benches by Spark Furniture



Existing cast iron bollards to be repainted and relocated. Some new bollards with chain link barrier between



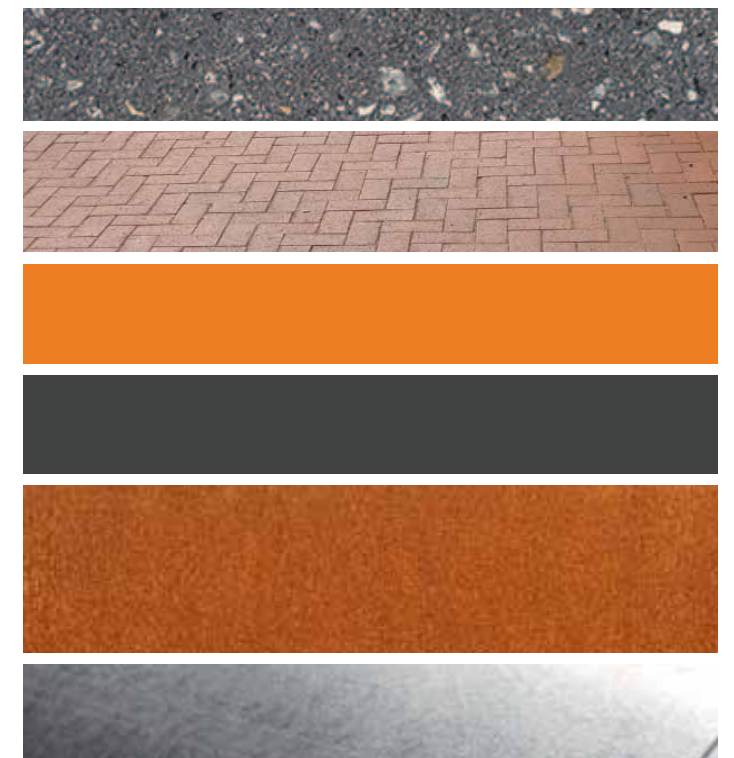
Existing tree guard



Proposed bin with custom laser cut panel



Removable cafe barrier with sleeve in ground and interchangeable canvas panel



Streetscape colour palette - Feature Paving, Red Brick, Orange, Monument Grey, Corten steel & Galvanised steel